



Broxwood Way

London, NW8 7QJ

£2,750 Per Calendar Month

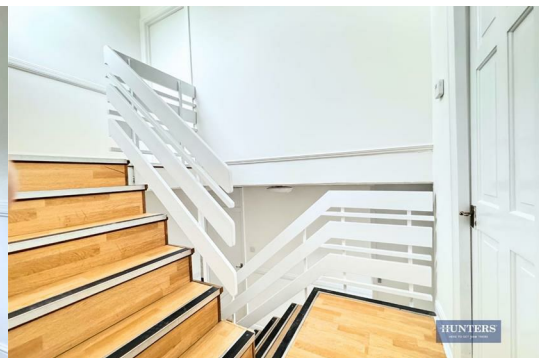


This recently decorated, with new furnishings, two-bedroom flat with a converted living room into a three-bedroom flat offers a blend of comfort and style, ideal for students or professional sharers. Nestled between Regent Park and Primrose Hill Park, just a short walk from Primrose Hill and St. John's Wood Station, this residence is perfectly positioned for easy access to the best of London.

The flat features three generous bedrooms, a separate toilet and bathroom, and a private balcony. With a separate dining room that can double as an office space and a fully equipped, separate kitchen, the property provides versatile living areas, recently repainted and redecorated throughout, creating a welcoming and fresh atmosphere.

Key Features:

- Three spacious bedrooms (living room converted)
- Private balcony with open views

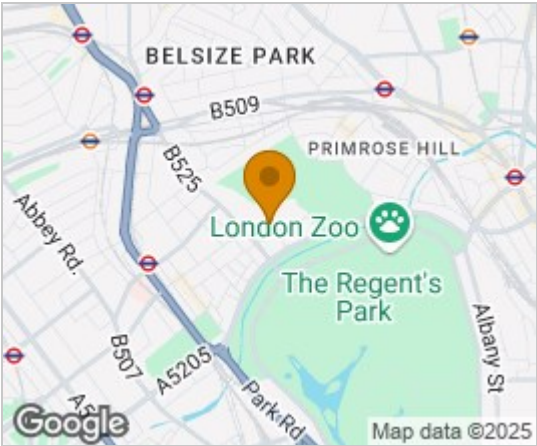


Travel
Train Stations:

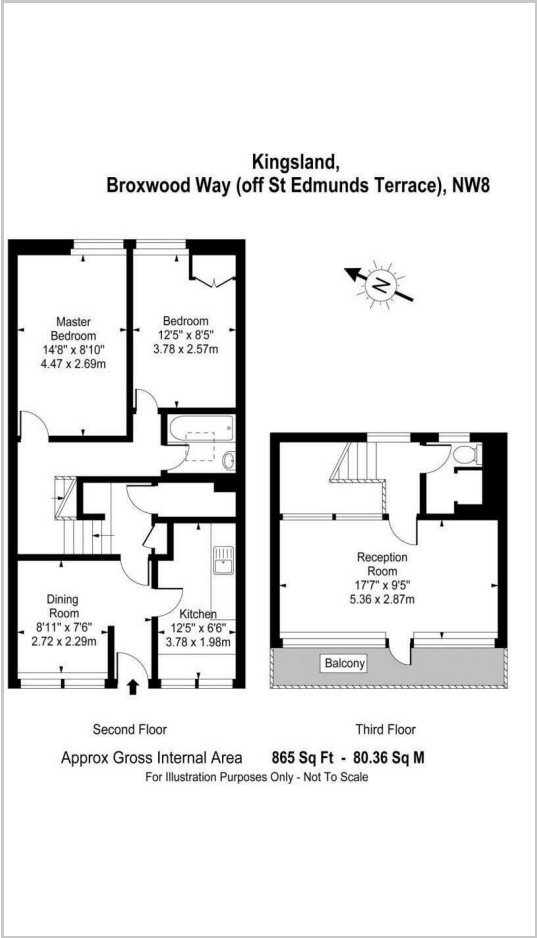
- St. John's Wood (0.6 miles)
- Swiss Cottage (0.7 miles)
- Chalk Farm (0.8 miles)

- Additional Information
- Council Tax Band: E
 - EPC Rating: D

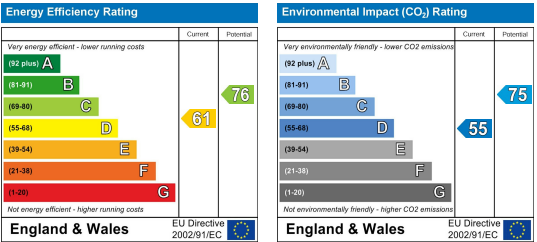
Area Map



Floor Plans



Energy Efficiency Graph



These particulars are intended to give a fair and reliable description of the property but no responsibility for any inaccuracy or error can be accepted and do not constitute an offer or contract. We have not tested any services or appliances (including central heating if fitted) referred to in these particulars and the purchasers are advised to satisfy themselves as to the working order and condition. If a property is unoccupied at any time there may be reconnection charges for any switched off/disconnected or drained services or appliances - All measurements are approximate.

THINKING OF SELLING? If you are thinking of selling your home or just curious to discover the value of your property, Hunters would be pleased to provide free, no obligation sales and marketing advice. Even if your home is outside the area covered by our local offices we can arrange a Market Appraisal through our national network of Hunters estate agents.