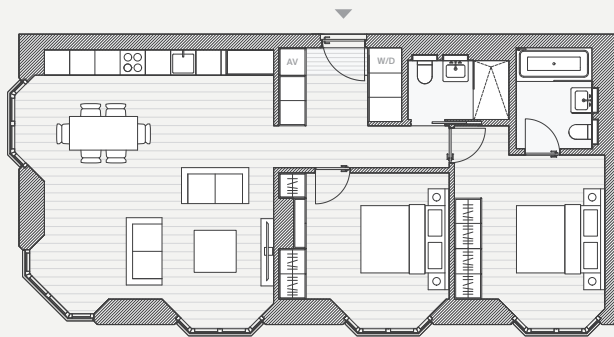


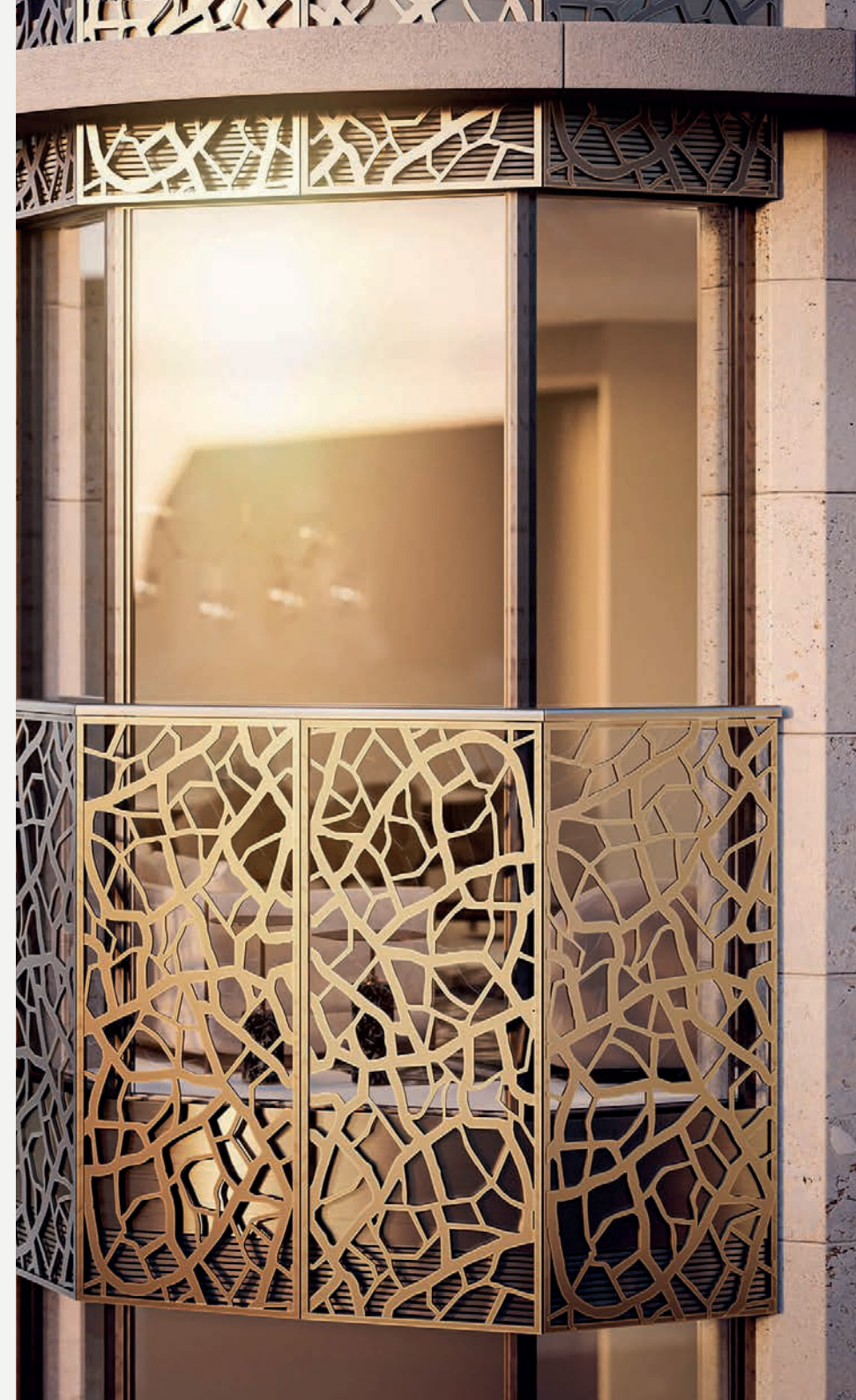


# W1 PLACE

LONDON



A502 - 2 BEDROOM APARTMENT VIEWS





# W1 PLACE

LONDON



1 CARBURTON ST (EAST)



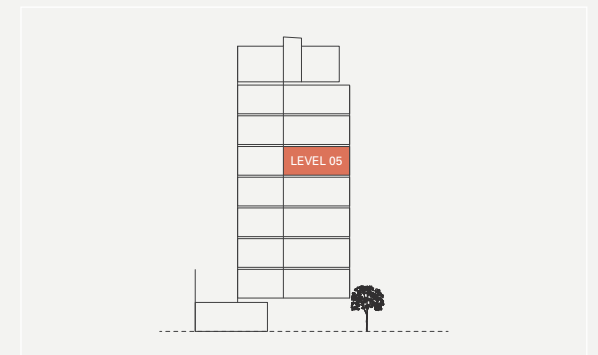
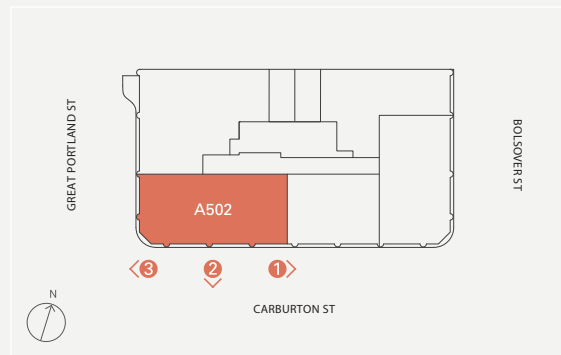
2 CARBURTON ST (SOUTH)



3 GREAT PORTLAND ST (WEST)

## A502 2 BEDROOM APARTMENT LEVEL 05

The apartment has a double aspect facing South & West.





# W1 PLACE

LONDON

---

## DEVELOPER

204 GP Street (Jersey) Ltd  
c/o Volaw Group  
37 Esplanade  
St. Helier  
Jersey JE1 2TR  
w1.place

## DEVELOPMENT MANAGER

Concord London Ltd.  
50 Bolsover St, Marylebone  
London W1W 5NG  
concord-london.com

## ARCHITECT

E8 Architecture  
E8 Design Ltd,  
1 Mentmore Terrace,  
London E8 3PN  
e8architecture.co.uk

The information in this document is intended to act as a guide only as to the finished product. This document does not constitute a contract or warranty nor does it provide any guarantee on the accuracy or completeness. All matters will be governed by the applicable purchase and sales agreement. All illustrations and computer generated images reflect the artists' interpretation of the project and do not take into account the neighbouring buildings, physical structures, streets and landscape. The developer reserves the right to make modifications and changes to the project including but not limited to architectural and interior features and finishes, brands, colours, materials, building design, specifications, ceiling heights, flooring patterns and floor plans without notification. Actual apartment plans and dimensions may have minor variations to, or shown as mirror image of the typical plans presented in this document and are not intended to be used for carpet sizes or items of furniture. Area measurements in this document are given as Gross Internal Area (GIA).

