



W1 PLACE

LONDON



PENTHOUSE

A801 - 3 BEDROOM APARTMENT VIEWS





W1 PLACE

LONDON



① GREAT PORTLAND ST (SOUTH)



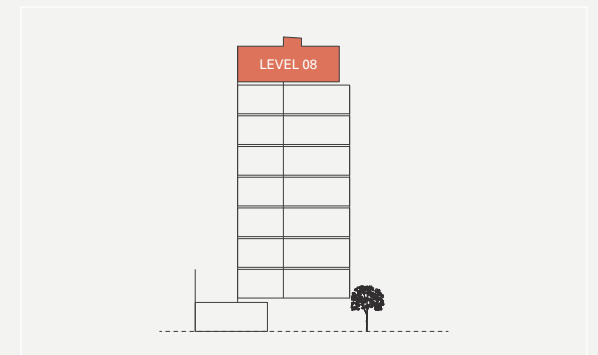
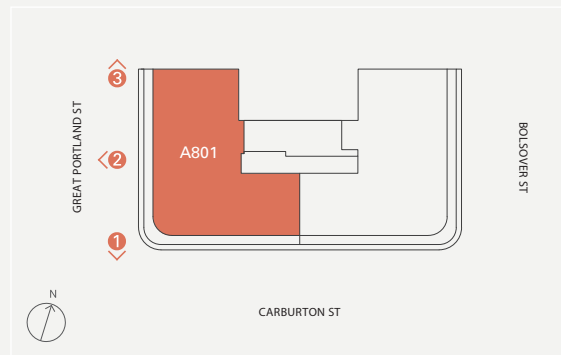
② GREAT PORTLAND ST (WEST)



③ GREAT PORTLAND ST (NORTH)

A801 3 BEDROOM APARTMENT LEVEL 08

The Penthouse has a dual aspect facing South and West.





W1 PLACE

LONDON



1 CARBURTON ST (EAST)



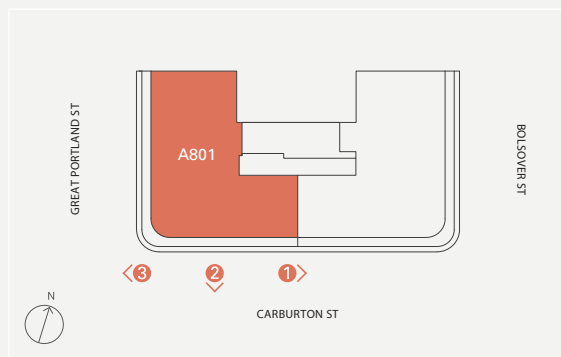
2 CARBURTON ST (SOUTH)



3 CARBURTON ST ((WEST))

A801 3 BEDROOM APARTMENT LEVEL 08

The Penthouse has a dual aspect facing South and West.





W1 PLACE

LONDON



① GREAT PORTLAND ST (SOUTH)

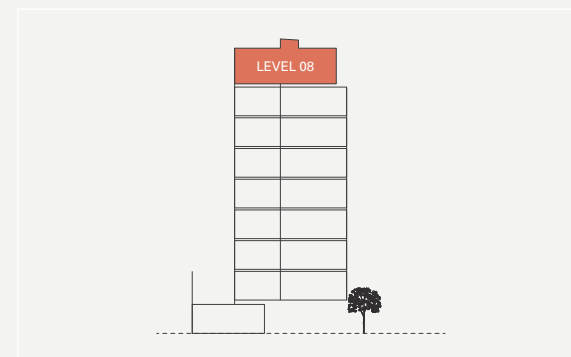
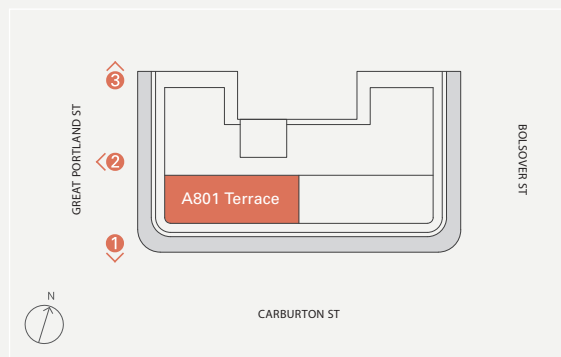
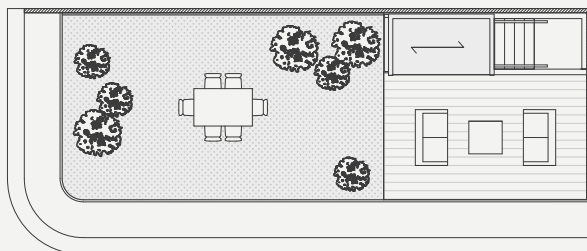


② GREAT PORTLAND ST (WEST)



③ GREAT PORTLAND ST (NORTH)

A801 ROOF TERRACE





W1 PLACE

LONDON

DEVELOPER

204 GP Street (Jersey) Ltd
c/o Volaw Group
37 Esplanade
St. Helier
Jersey JE1 2TR
w1.place

DEVELOPMENT MANAGER

Concord London Ltd.
50 Bolsover St, Marylebone
London W1W 5NG
concord-london.com

ARCHITECT

E8 Architecture
E8 Design Ltd,
1 Mentmore Terrace,
London E8 3PN
e8architecture.co.uk

The information in this document is intended to act as a guide only as to the finished product. This document does not constitute a contract or warranty nor does it provide any guarantee on the accuracy or completeness. All matters will be governed by the applicable purchase and sales agreement. All illustrations and computer generated images reflect the artists' interpretation of the project and do not take into account the neighbouring buildings, physical structures, streets and landscape. The developer reserves the right to make modifications and changes to the project including but not limited to architectural and interior features and finishes, brands, colours, materials, building design, specifications, ceiling heights, flooring patterns and floor plans without notification. Actual apartment plans and dimensions may have minor variations to, or shown as mirror image of the typical plans presented in this document and are not intended to be used for carpet sizes or items of furniture. Area measurements in this document are given as Gross Internal Area (GIA).

