

ANY  
Part Exchange  
WELCOME



# Foxglove Way

RUDHEATH, NORTHWICH, CW9 7XS

**onestop**  
why wait? live your life now.

property  
solutions









Foxglove Way  
RUDHEATH, NORTHWICH, CW9 7XS

---

**\*\*NEW\*\*    \*\*ANY Part Exchange Welcome\*\***  
**BEAUTIFUL & IMMACULATE Chain-Free**  
**THREE BEDROOM SEMI-DETACHED**  
**Home\*\* GORGEOUS Contemporary DINING**  
**KITCHEN \*\* SHOW HOME CONDITION**  
**THROUGHOUT \*\* MASTER BEDROOM EN-**  
**SUITE\*\* \*\*FABULOUS LANDSCAPED REAR**  
**GARDEN\*\***

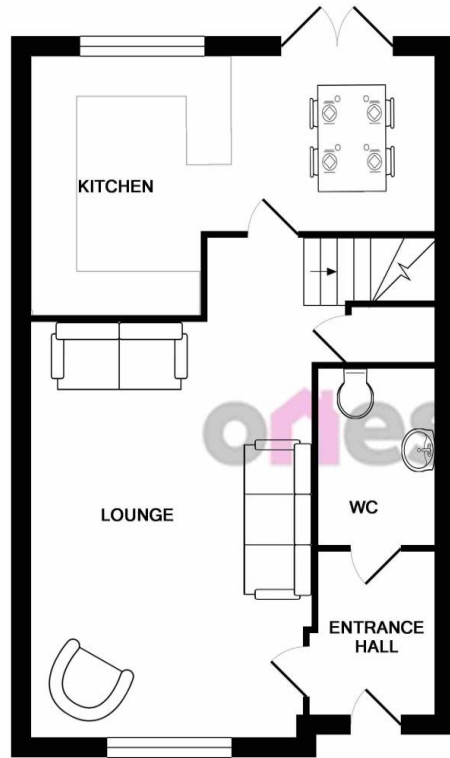
---

#### The Current Owners Love:

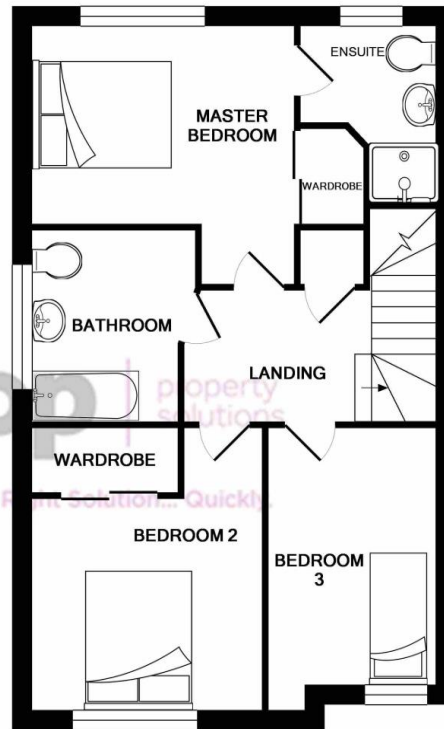
- "Kitchen and living room space open and has been perfect for young family living through to hosting friends"
- "Garden that comes into its own in Summer but suits cosy winters too with space to play, relax and entertain"
- "Great transport links combined with Cheshire countryside on doorstep"

#### We Have Noticed:

- "Fabulous value for money"
- "Great location close to all local amenities and local networks"
- "Move in condition throughout"



GROUND FLOOR  
APPROX. FLOOR  
AREA 65.9 SQ.M.



1ST FLOOR  
APPROX. FLOOR  
AREA 66.1 SQ.M.



Foxglove Way  
RUDHEATH, NORTHWICH, CW9 7XS

### Key Features:

- CHAIN FREE
- ANY PART EXCHANGE WELCOME
- SHOW HOME CONDITION THROUGHOUT
- MASTER BEDROOM EN-SUITE
- BEAUTIFUL CONTEMPORARY DINING KITCHEN
- GORGEOUS LANDSCAPE REAR GARDEN

**Tenure:** Leasehold

**Council Tax Band:** C (to be confirmed by local authority).

**Possession:** Vacant possession upon completion.

**Viewing:** Strictly by appointment only through One Stop Property Solutions.





Property Summary

Ground Floor

Entrance

WC

Lounge

Kitchen/Diner

First Floor

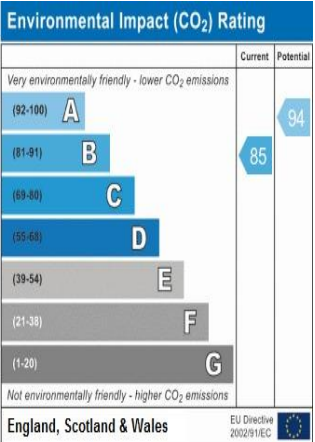
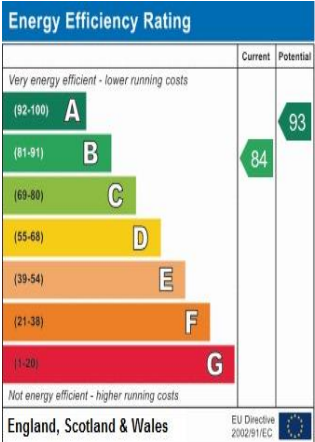
Master bedroom

En-Suite

Bathroom

Bedroom Two

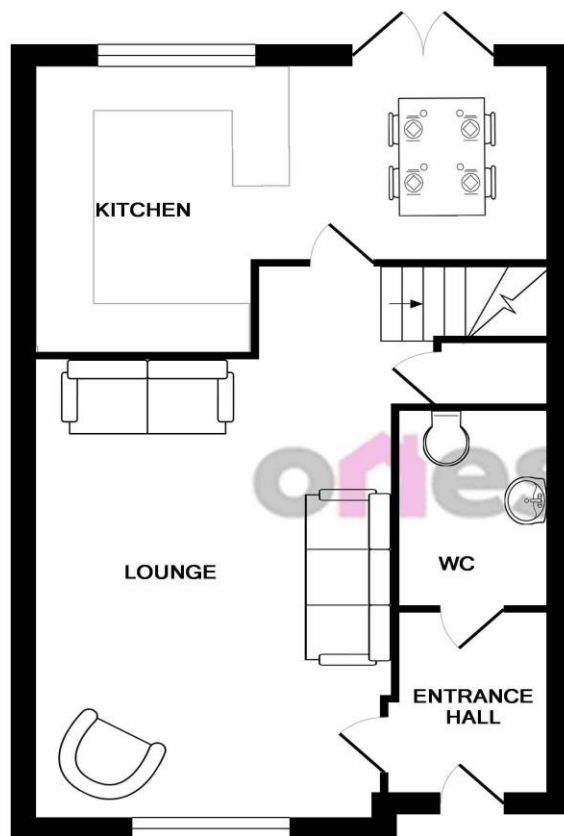
Bedroom Three



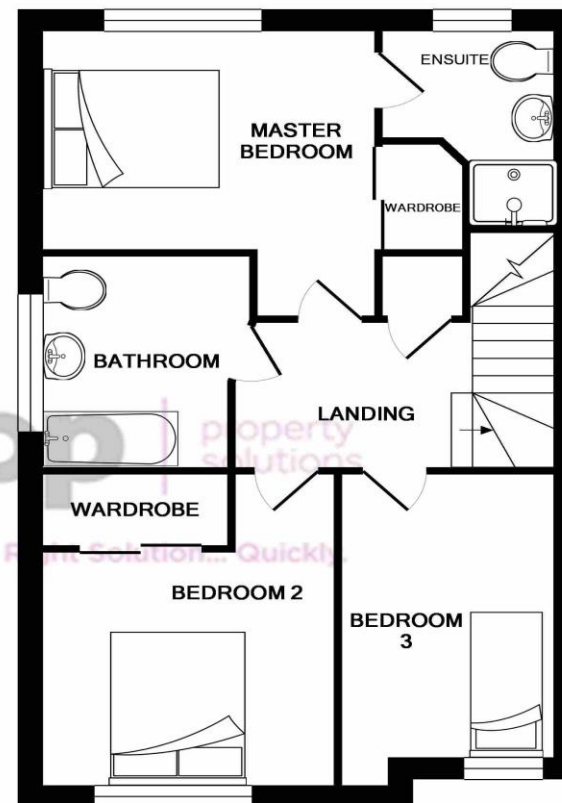




*Did you Know? That you can Part Exchange your current home for this property... hassle free.*



GROUND FLOOR  
APPROX. FLOOR  
AREA 65.9 SQ.M.  
(709 SQ.FT.)



1ST FLOOR  
APPROX. FLOOR  
AREA 66.1 SQ.M.  
(711 SQ.FT.)

TOTAL APPROX. FLOOR AREA 131.9 SQ.M. (1420 SQ.FT.)  
Measurements are approximate. Not to scale. Illustrative purposes only  
Made with Metropix ©2018