



Blossom View



"This location is ideal. We are near everything we need."



WELCOME HOME



Blossom View

Blossom View, an impressive and magnificent home, Bridge Lane has been beautifully extended, improved, and finished. No expense or effort has been spared – and it shows. A new family can move in, instantly feel at home and make the house their own. Every modern convenience has been added while highlighting or restoring countless original period features. All features, fixtures and fittings are high-end with everything carefully considered to deliver maximum space, light, and flow while working perfectly for a family. Potentially a forever home, there's ample space to live, work and grow as well as options for multi-generational living. Though undoubtedly elegant and unarguably substantial, the property is still charming, cosy and homely – the vastness hasn't compromised that one bit. This is a comfortable home, one to live in, to love, and to retreat into after a tough day – yet one which will also impress. Above all, it's just that, a home - not a property or a project. A happy, happy home.

"Our beautiful home has done its job. Our children are grown and it's time for a new family to love it and be happy here."





"We have loved this house. As soon as we saw it, we saw potential - and a superb garden."

LOVE WHERE YOU LIVE



Everyone would agree that Bramhall really is blessed with the best of everything. The local shops and services are superb. Fir Road, a short walk away, has a row of shops, a popular pub, and a vibrant community responsible for the yearly Fir Road Christmas Markets, amongst other events. A handy little shop sits at the main roundabout near Bramhall Park, and in the opposite direction, local hostelry the Three Bears is a welcome stop for a relaxing beverage. A plethora of local bars and pubs, and a smorgasbord of restaurants delivering cuisine from Italian to Thai make staying local a pleasure. However, with Manchester, Wilmslow and up-and-coming Stockport all easily accessible, metropolitan life is within as easy reach as that glorious countryside.



Local schools are consistently high performing, with prep and public schools also nearby, and several highly rated nurseries. The nation's favourite department stores, John Lewis and Marks & Spencer aren't far away. Countless sports clubs and facilities are just minutes away, as well as those marvellous walks in almost every direction – almost all with an eatery en route.

This magnificent home has everything. It could be a dream home and its character and charm, uniquely melded with impressive square footage must be viewed to be fully appreciated. This is a stunning and surprising home and one which will make one lucky family's dreams come true.



"We can host incredible parties here, accommodating seventy or eighty guests, no problem at all. Even more on warmer evenings, when we can spread outdoors."



HEART OF THE HOME

Heading straight down the hall, we find a vast and light-flooded extension, accommodating the kitchen, dining room and family space. This incredible space stretches the entire width of the property and is the most perfect social setting – think huge family gatherings and fabulous parties – overlooking the gorgeous garden bordered by mature trees.

The kitchen itself is a timelessly elegant Shaker style in a fresh, clean white with a bank of seamless integrated ovens, a microwave and coffee machine. A suitably sizeable island unit hosts a large hob as well as a wine fridge and adds plenty of seating, lending itself to sociable dinner party cooking or precious family time. A colour-blocked end wall adds warmth while light is maximised with tall windows, roof lanterns and bifold doors out to the patio and garden beyond.

The dining area continues from the kitchen, offering ample space for a spacious dining table and continuing the light-filled space with bifold doors and a ceiling lantern. A comfortable family room concludes this extended space, offering room for a big, squashy L-shaped sofa ideal for family movie nights. So far, so much accommodation – but there's still so much more in this beautiful home, full of surprises.


Blossom View





ALL YOU NEED IS STORAGE...

Keeping clutter and large appliances out of sight, an equally attractive and generously proportioned Shaker utility room leads off the kitchen, as does a useful pantry.

One last surprise remains. A breathtaking and expansive boot room, accessed also via an external door, thus keeping muddy dogs, dirty wellies, or virtually a whole rugby team out of harm's way. A shower room and more stylish storage than one could shake a stick at make this space an absolute Godsend for busy family life.




Blossom View





ONWARDS AND UPWARDS

AGAIN

Blossom View



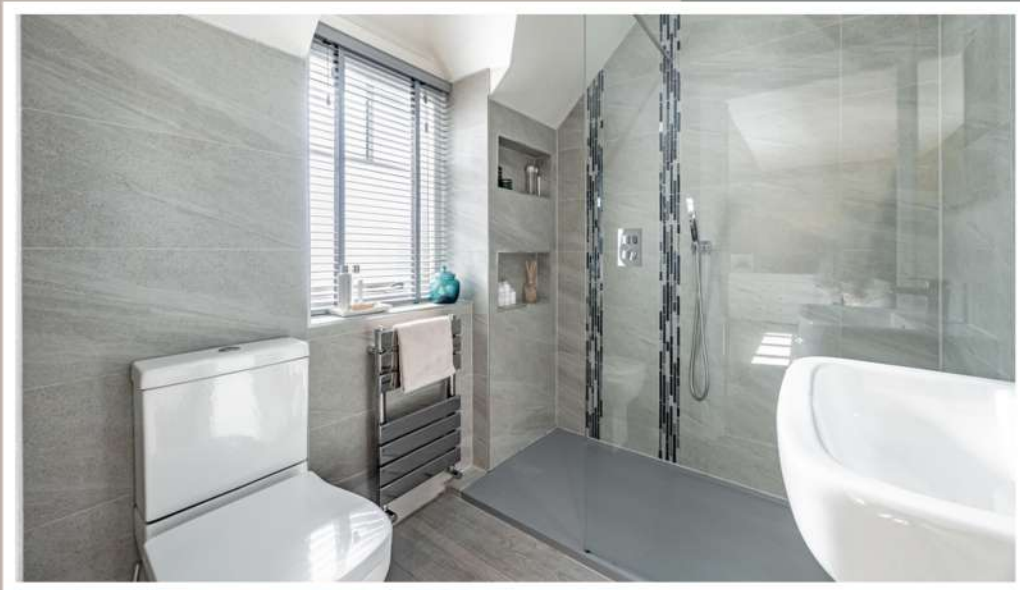
If the ground floor delivers everything a family could wish for, and then some, heading upstairs is equally pleasing. The panelling continues up the stairway, perfectly complemented by traditional barley sugar twist spindles to the bannisters. Softly carpeted, the stairs are given further period treatment with wrought iron stair rods. The landing is, again, light and airy and offers access to five generous bedrooms and an ample family bathroom.



The first bedroom, designated a guestroom, features a characterful sloping ceiling and would fit a double bed. A fresh and bright family bathroom features a large bath, a walk-in shower and Art Deco wash hand basin. Three further double bedrooms and an enviable and restful master suite complete the accommodation. Double aspect, roomy and yet still cosy, the master bedroom benefits from a spacious dressing room and wood panelling. A couple of steps lead down to a lovely ensuite with walk-in shower.



Blossom
View





Blossom View



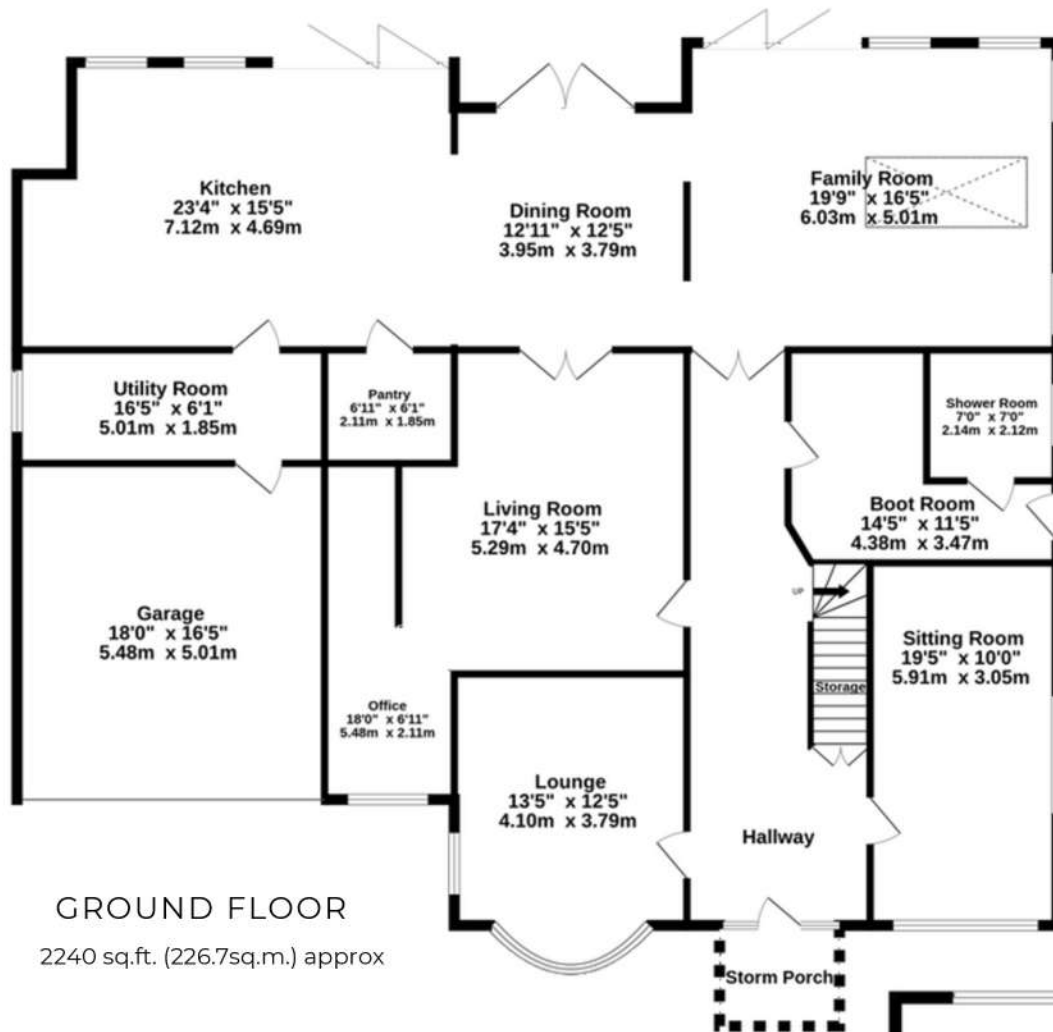
OUTSIDE



The eye is led over trees and green, almost as far as can be seen, thanks to the rugby pitches and Happy Valley beyond. The garden itself is a fantastic size, almost paddock-like, yet requires relatively modest maintenance. That said, it would lend itself to all manner of cultivation should you wish. A vast patio area accommodates several seating areas looking out on to the lush, green lawn to the end of which is a gate offering access to the fields beyond. But wait - there's one further surprise. The garden features a magnificent Summerhouse or outdoor bar area, with an open fire and lighting as well as seating for double figures. As well as beautiful, everything about this home is social and family-oriented – the outside space is no exception. Surrounded by natural planting and mature trees, hearing little but birdsong, relaxation is a doddle.



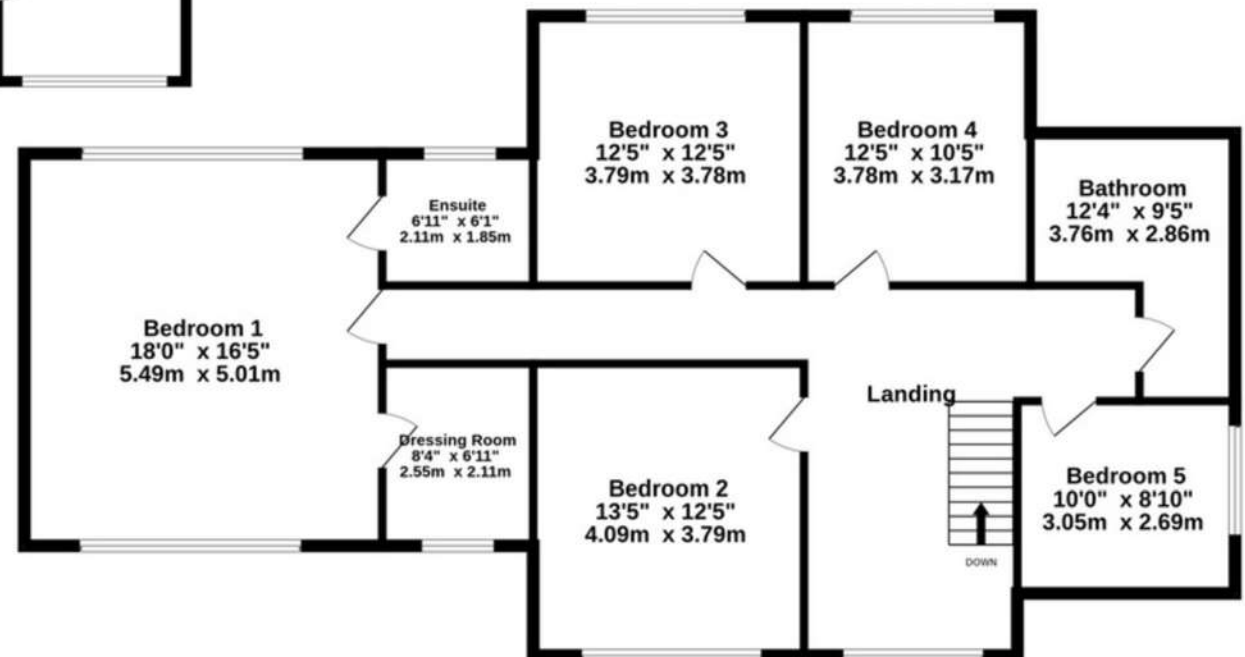




TOTAL FLOOR AREA
3900 sq. ft. (362.3 sq.m.) approx

FIRST FLOOR

1300 sq.ft. (120.8 sq.m.) approx

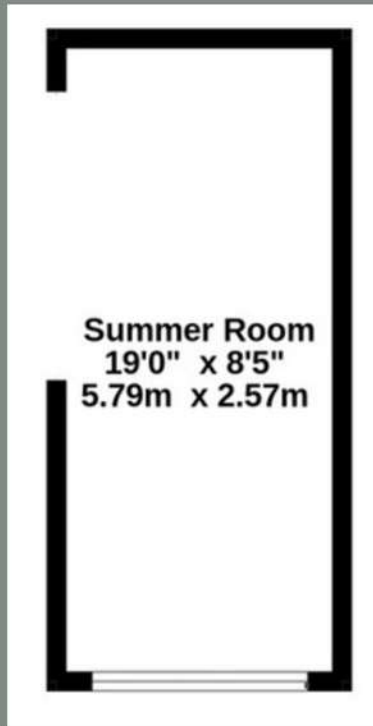


This plan is for illustrative purposes only and should be used as such by any prospective purchaser.

Whilst every attempt has been made to ensure the accuracy of the floorplan contained here, measurements of doors, windows, rooms and any other items are approximate and no responsibility is taken for any error, omission or mis-statement. This plan is for illustrative purposes only and should be used as such by any prospective purchaser. The services, systems and appliances shown have not been tested and no guarantee as to their operability or efficiency can be given.
Made with Metropix ©2025

Outside

160 sq.ft. (14.9 sq.m.) approx



Score	Energy rating	Current	Potential
92+	A		
81-91	B		
69-80	C	70 C	78 C
55-68	D		
39-54	E		
21-38	F		
1-20	G		

HIGHLIGHTS

- Substantial and majestic 1930s home with elegant Arts and Crafts charm
- Turn-key home with stunning renovations and stylish contemporary living
- Offers 3,900 sq ft of stylish living accommodation
- Expansive and beautifully landscaped south-facing garden
- Striking kerb appeal with elegant detailing and a commanding presence
- Magnificent five-bedroom, three-bathroom detached family residence, brimming with character and style
- Impressive seven reception rooms, perfect for both entertaining and everyday family living





Blossom View, Bridge Lane, Bramhall, SK7 3AW

presented by

SHRIGLEY ROSE & CO
Bespoke Estate Agents

0161 425 7878 | hello@shrigley-rose.co.uk