

**3 Bed
House - Semi-Detached
located in**



126 Tudor Crescent

Ilford

IG6 2SD



£2,200 Per Month

3-Bedroom Semi-Detached Home with Garden & Parking -
Hainault, IG6

Sincere Lettings are delighted to present this well-proportioned three bedroom semi-detached family home located on the highly sought after Tudor Crescent, Hainault. Offering approximately 915 sq ft of living space, the property provides bright and versatile accommodation with a practical layout, perfect for families or professional sharers.

The ground floor features a spacious and airy living room, a modern fitted kitchen, and a convenient downstairs WC. Upstairs, you'll find two large double bedrooms alongside a well-sized single bedroom, as well as a family bathroom suite.

Externally, the property boasts a large private garden with shed, side entrance access, and the added benefit of off-street parking for multiple vehicles - a rare advantage in this popular area.

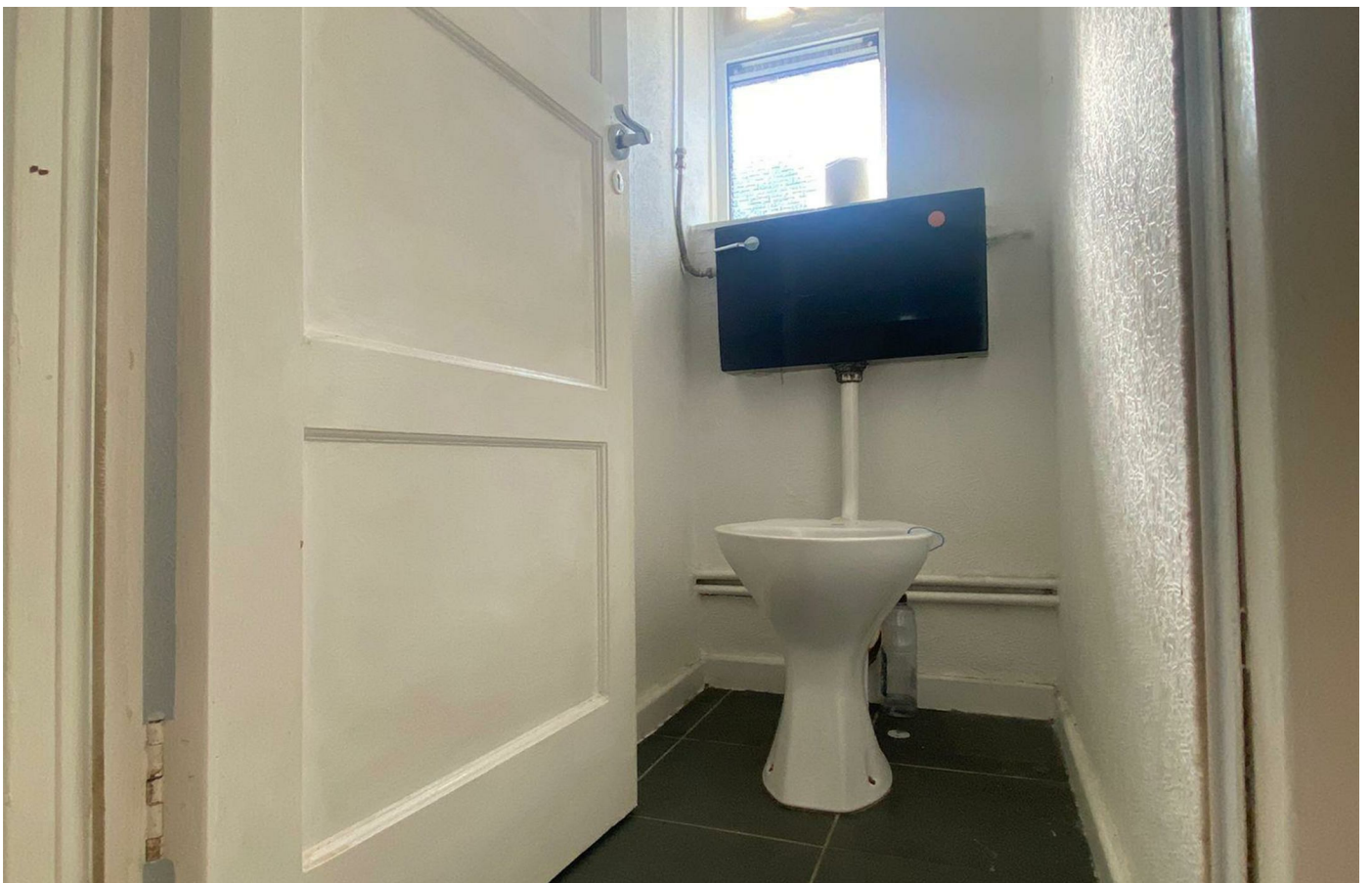
Located within walking distance of Hainault Central Line Station, residents enjoy quick and direct access into Central London. Local

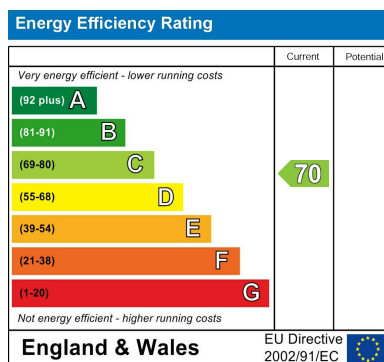






126 Tudor Crescent, Ilford, IG6 2SD





DIRECTIONS

CONTACT

252 Hoe Street
London
E17 3AX

E: admin@sincerelettings.co.uk

T: 02085200425

www.sincerelettings.co.uk

