



**2 Bed
Apartment
located in Stratford**



Flat 14 19 Maitland
Road
Stratford
London
E15 4EL



£1,700 Per Month

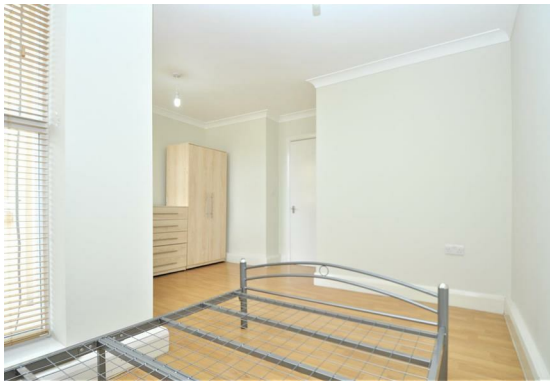
Sincere Lettings are pleased to offer this Two bedroom Second Floor Flat. The property consists of two double bedrooms and a fitted kitchen with an open plan reception.

**** Communal garden ****

The property is located only 13 minutes walk from Maryland station, 18 minutes walk to Stratford station and minutes away from local amenities.

The flat is in a great location, close to nearby bus and train stations, allowing for simple commuting. The property is ideal for prospective tenants because it is surrounded by a variety of local shops, supermarkets, and cafes, allowing them to get all of their daily necessities right on their doorstep.

Available now taken unfurnished.





Flat 14 19 Maitland Road, Stratford, London, E15 4EL

Energy Efficiency Rating		
	Current	Potential
<i>Very energy efficient - lower running costs</i>		
(92 plus) A		
(81-91) B		
(69-80) C		
(55-68) D		
(39-54) E		
(21-38) F		
(1-20) G		
<i>Not energy efficient - higher running costs</i>		
England & Wales	EU Directive 2002/91/EC	

DIRECTIONS

CONTACT

252 Hoe Street
London
E17 3AX

E: admin@sincerelettings.co.uk

T: 02085200425

www.sincerelettings.co.uk

