



**2 Bed
Apartment
located in Stratford**

 **sincere**
PROPERTY SERVICES

Flat 14 21-23 Maitland
Road
Stratford
London
E15 4EL



£1,700 Per Month

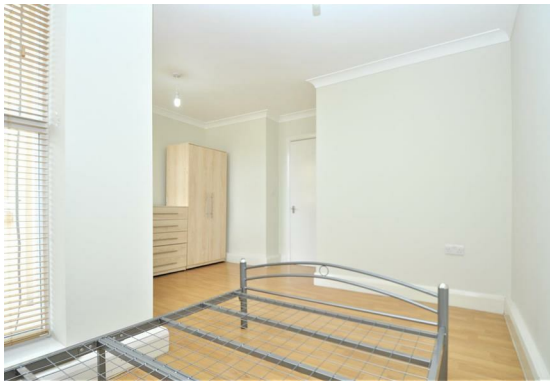
Sincere Lettings are pleased to offer this Two bedroom Second Floor Flat. The property consists of two double bedrooms and a fitted kitchen with an open plan reception.

**** Communal garden ****

The property is located only 13 minutes walk from Maryland station, 18 minutes walk to Stratford station and minutes away from local amenities.

The flat is in a great location, close to nearby bus and train stations, allowing for simple commuting. The property is ideal for prospective tenants because it is surrounded by a variety of local shops, supermarkets, and cafes, allowing them to get all of their daily necessities right on their doorstep.

Available 11th July 2025 taken unfurnished.





Flat 14 21-23 Maitland Road, Stratford, London, E15
4FI

Energy Efficiency Rating		
	Current	Potential
<i>Very energy efficient - lower running costs</i>		
(92 plus) A		
(81-91) B		
(69-80) C		
(55-68) D		
(39-54) E		
(21-38) F		
(1-20) G		
<i>Not energy efficient - higher running costs</i>		
England & Wales	EU Directive 2002/91/EC	

DIRECTIONS

CONTACT

252 Hoe Street
London
E17 3AX

E: admin@sincerelettings.co.uk

T: 02085200425

www.sincerelettings.co.uk

