

**1 Bed  
Apartment  
located in**



# Flat 15 Oak Tree Lodge 49-50 Leinster Gardens London W2 3AT



1



1



1



## £2,100 Per Month

Sincere Lettings are presenting a flat to rent in Bayswater. The property is on Leinster Gardens and comprises 1 bedroom and 1 bathroom.

Covering 508 sq. ft. in living space and situated on the third floor, this modern property comes with big windows, high ceilings and ample storage. The property also benefits from abundant natural light throughout.

- Fully-fitted kitchen
- Freezer
- Washer/Dryer
- 6 / 12 month contract

The flat is under the Council tax Band of D. Located on a quiet street, the property is located between Bayswater Underground Station and Paddington Stations and just a short walk from Kensington Gardens.





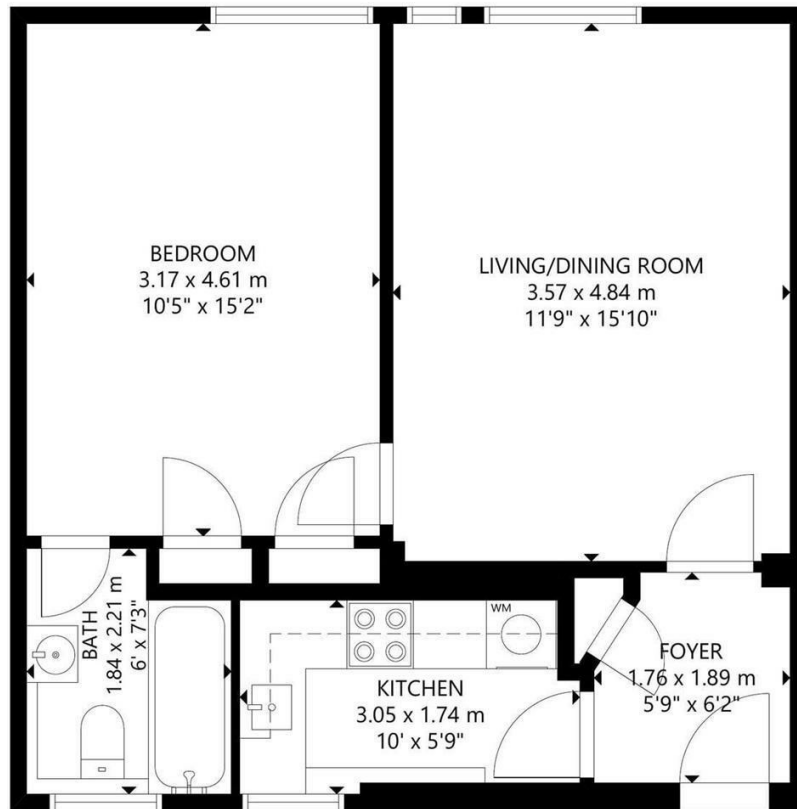






Flat 15 Oak Tree Lodge 49-50 Leinster Gardens,  
London W2 3AT





THIRD FLOOR

GROSS EXTERNAL AREA  
TOTAL: 47 m<sup>2</sup>/508 sq ft  
THIRD FLOOR: 47 m<sup>2</sup>/508 sq ft  
SIZE AND DIMENSIONS ARE APPROXIMATE, ACTUAL MAY VARY.

Energy Efficiency Rating		
	Current	Potential
Very energy efficient - lower running costs		
(92 plus) <b>A</b>		
(81-91) <b>B</b>		
(69-80) <b>C</b>		
(55-68) <b>D</b>		
(39-54) <b>E</b>		
(21-38) <b>F</b>		
(1-20) <b>G</b>		
Not energy efficient - higher running costs		
<b>England &amp; Wales</b>	EU Directive 2002/91/EC	

## DIRECTIONS

## CONTACT

252 Hoe Street  
London  
E17 3AX

E: [admin@sincerelettings.co.uk](mailto:admin@sincerelettings.co.uk)

T: 02085200425

[www.sincerelettings.co.uk](http://www.sincerelettings.co.uk)

