

# HUNTERS<sup>®</sup>

HERE TO GET *you* THERE



## Milton Green

Shieldfield, Newcastle Upon Tyne, NE2 1YG

£1,300 Per Calendar Month



Hunters Newcastle are delighted to present this property located in the popular Shieldfield area. It is extremely close to the city centre and universities making it ideal for both students and professionals. It can accommodate up to 3 people sharing.

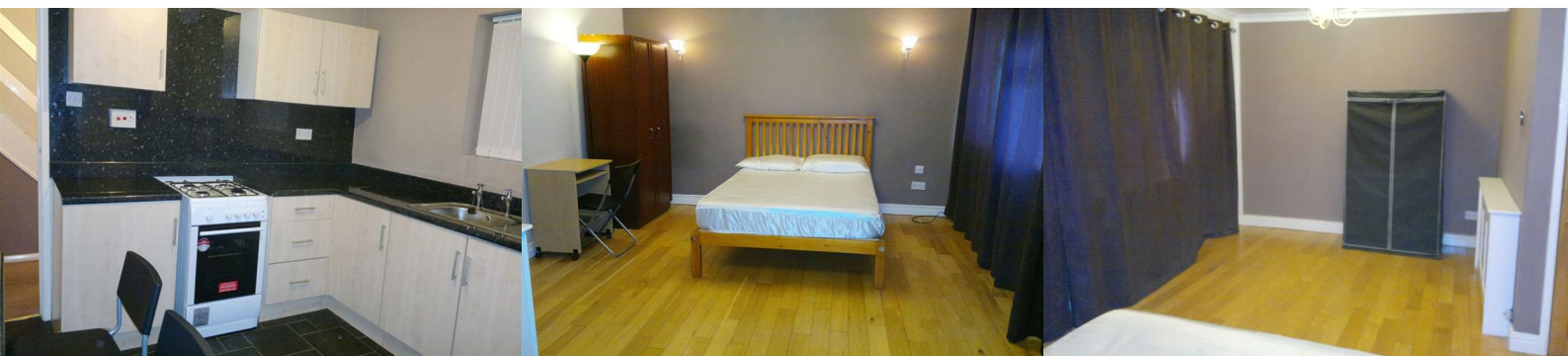
The property comprises of 3 double bedrooms. The bathroom is fitted with a shower. All bedrooms are spacious and have modern furniture throughout. There is a good sized communal kitchen.

Available immediately. Please contact the office to arrange a viewing.

Deposit: £1300

Tenancy Length: Minimum 10 months

Council Tax Band: A



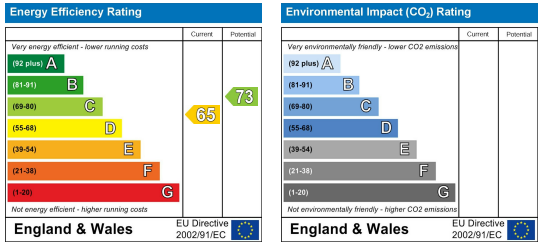
### Area Map



### Floor Plans



### Energy Efficiency Graph



These particulars are intended to give a fair and reliable description of the property but no responsibility for any inaccuracy or error can be accepted and do not constitute an offer or contract. We have not tested any services or appliances (including central heating if fitted) referred to in these particulars and the purchasers are advised to satisfy themselves as to the working order and condition. If a property is unoccupied at any time there may be reconnection charges for any switched off/disconnected or drained services or appliances - All measurements are approximate. **THINKING OF SELLING?** If you are thinking of selling your home or just curious to discover the value of your property, Hunters would be pleased to provide free, no obligation sales and marketing advice. Even if your home is outside the area covered by our local offices we can arrange a Market Appraisal through our national network of Hunters estate agents.