

HUNTERS[®]

HERE TO GET *you* THERE



Peppercorn Court

Newcastle Upon Tyne, NE1 3HD

Offers Over £200,000



Nestled in a prestigious gated community in the heart of Newcastle's celebrated Quayside, this elegant 2-bedroom maisonette represents a unique blend of privacy and urban chic.

Property Highlights:

Enter into a beautifully appointed open-plan living and dining space where natural light floods through large windows as the property is predominantly south facing, enhancing the sleek, contemporary décor. The lounge area, with its comfortable, modern aesthetic, offers the perfect backdrop for both relaxation and entertaining, the property also benefits from downstairs WC.

The kitchen is a masterpiece of design and functionality and ample storage solutions. Whether hosting dinner parties or enjoying quiet evenings at home, this kitchen meets all your needs.

Spacious Bedrooms: Two generously sized bedrooms serve as peaceful retreats. The master bedroom features large windows which brings in natural light and views of the tyne bridge while the second bedroom can also serve as a home office or guest room featuring a built in wardrobe and enclosed balcony.

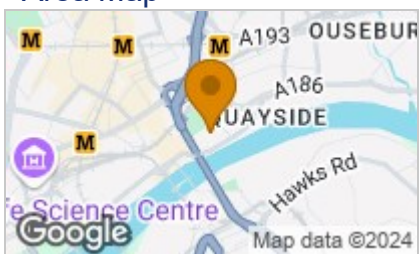
Private Amenities: Enjoy the convenience of secure, gated parking and private outdoor spaces which offer views of the Quayside and beyond. also features private parking, the property benefits from one allocated parking space.

Location Perks: Located within a gated community, you are moments away from Newcastle's best dining, shopping, and entertainment options. The iconic River Tyne is just a stone's throw away, perfect for leisurely strolls along the water.

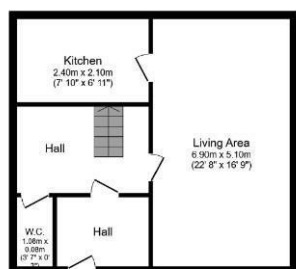
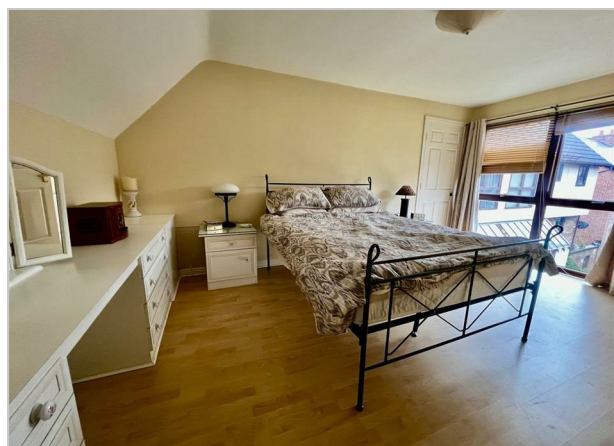
Connectivity and Convenience: With easy access to major transport links, including the Metro and bus services, the whole city is within reach. Ideal for commuters and those looking to explore the rich cultural tapestry of Newcastle.

This maisonette not only offers a prime location but also promises a lifestyle of unmatched convenience and luxury. Whether you're downsizing, investing, or simply seeking a dynamic urban lifestyle.

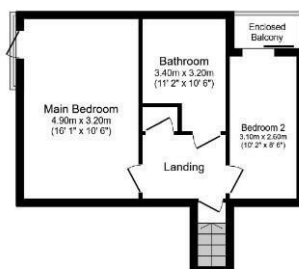
Area Map



Energy Efficiency Rating		Environmental Impact (CO ₂) Rating			
Very energy efficient - lower running costs	Current	Potential	Very environmentally friendly - lower CO ₂ emissions	Current	Potential
(92 plus) A			(92 plus) A		
(81-91) B			(81-91) B		
(69-80) C			(69-80) C		
(55-68) D			(55-68) D		
(39-54) E			(39-54) E		
(21-38) F			(21-38) F		
(1-20) G			(1-20) G		
Not energy efficient - higher running costs			Not environmentally friendly - higher CO ₂ emissions		
England & Wales	EU Directive 2002/91/EC		England & Wales	EU Directive 2002/91/EC	



Ground Floor



First Floor

These particulars are intended to give a fair and reliable description of the property but no responsibility for any inaccuracy or error can be accepted and do not constitute an offer or contract. We have not tested any services or appliances (including central heating if fitted) referred to in these particulars and the purchasers are advised to satisfy themselves as to the working order and condition. If a property is unoccupied at any time there may be reconnection charges for any switched off/disconnected or drained services or appliances - All measurements are approximate. **THINKING OF SELLING OR LETTING?** If you are thinking of selling or letting your home or just curious to discover the value of your property, Hunters would be pleased to provide free, no obligation sales and marketing advice. Even if your home is outside the area covered by our local offices we can arrange a Market Appraisal through our national network of Hunters estate agents.

65 Percy Street, Newcastle, NE1 7RN
Tel: 0191 447 3282 Email: newcastle@hunters.com <https://www.hunters.com>

