

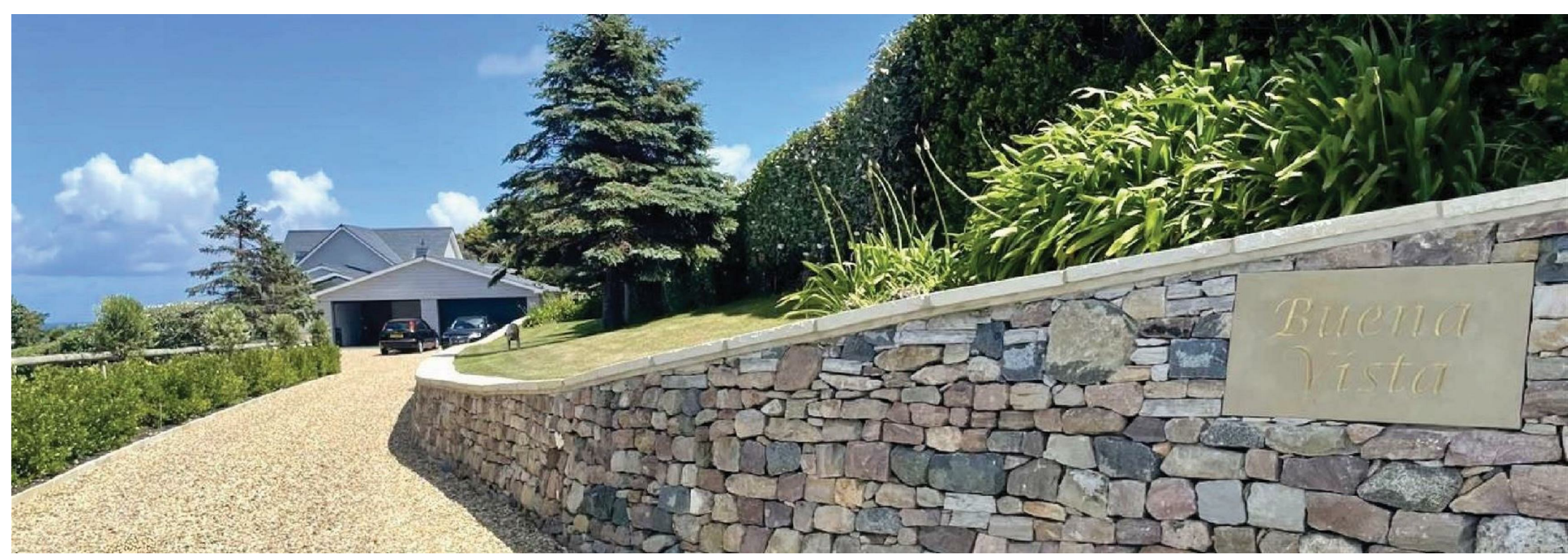


Les Butes Alderney
£3,995,000

*Distinctive
Collection*









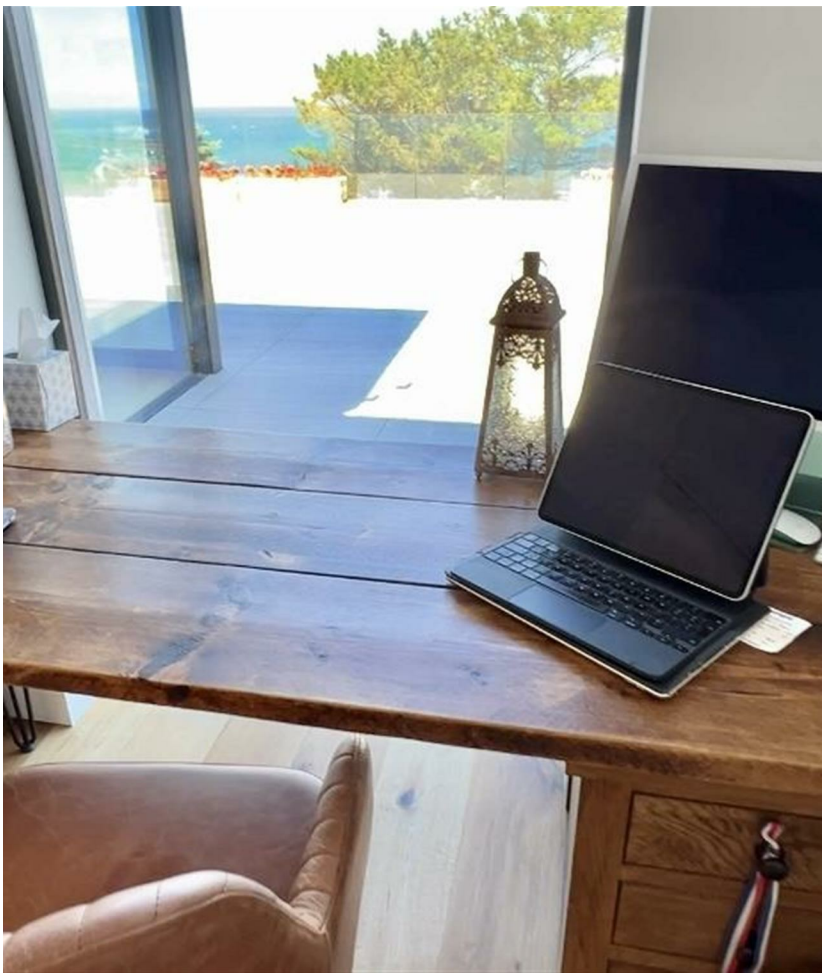
Buena Vista is without doubt one of the finest residences on the island, in a super prime location, benefitting from the most spectacular panoramic views from sunrise over Fort Albert in the East, the harbour to the North, and magnificent sunsets over Fort Tourgis to the West, it literally doesn't get any better than this!

The main house offers over 430 sqm of living space. It has been meticulously and completely redesigned, redeveloped and extended. It is built to the highest standards throughout, the attention to detail is faultless, this is truly a grand design on the highest scale, and it could all be yours!

The construction has taken some three years, the owner has brought together a hand picked team of first class building contractors that have worked on other select projects on island over the years.









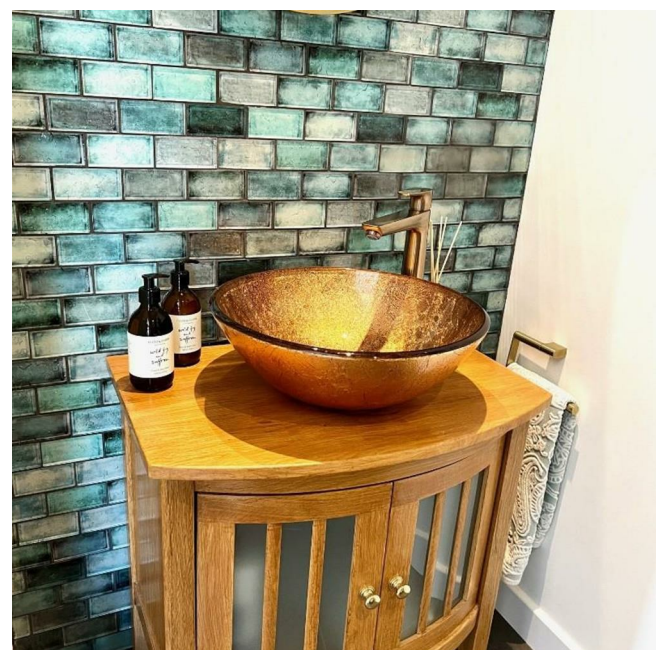
Buena Vista sits in a private, secluded plot of 5000 sqm. It features over 430 sqm of living accommodation, four large double bedrooms all with superb en suite bathrooms, a large garage of 50 sqm which provides parking for up to 4 cars and a self contained lower ground floor unit in excess of 80 sqm.

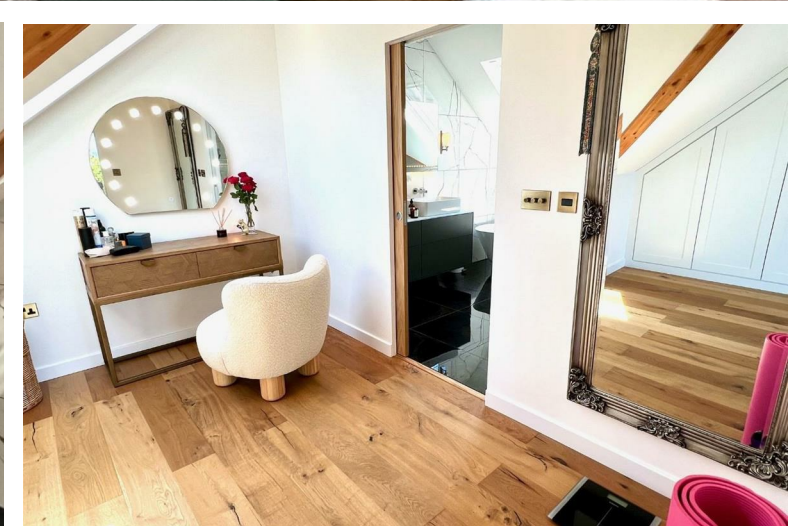
The entrance is stunning, hand made oak doors (with two bullets!) open up to a grand entrance hall with a vaulted ceiling which features a set of bespoke black crittall glazed doors. These lead you into the most amazing open plan lounge dining room and kitchen you can imagine, the views out to Braye bay and the harbour are the best on the island without doubt, the main set of frameless, glass sliding doors are 9.5m wide, and open onto a terrace facing the sea that could hold over 200 guests if you were having a party.

The house has an amazing master bedroom of 70 sqm on the first floor with its own dressing area, bespoke wardrobes and a luxury ensuite bathroom, it features a private terrace with spectacular views over The English Channel.

There is a very large room of over 80 sqm on the lower ground level floor, which has been retained as one large open plan space, perfect for a turning into a self contained unit for family or guests, gymnasium, party room or home cinema.

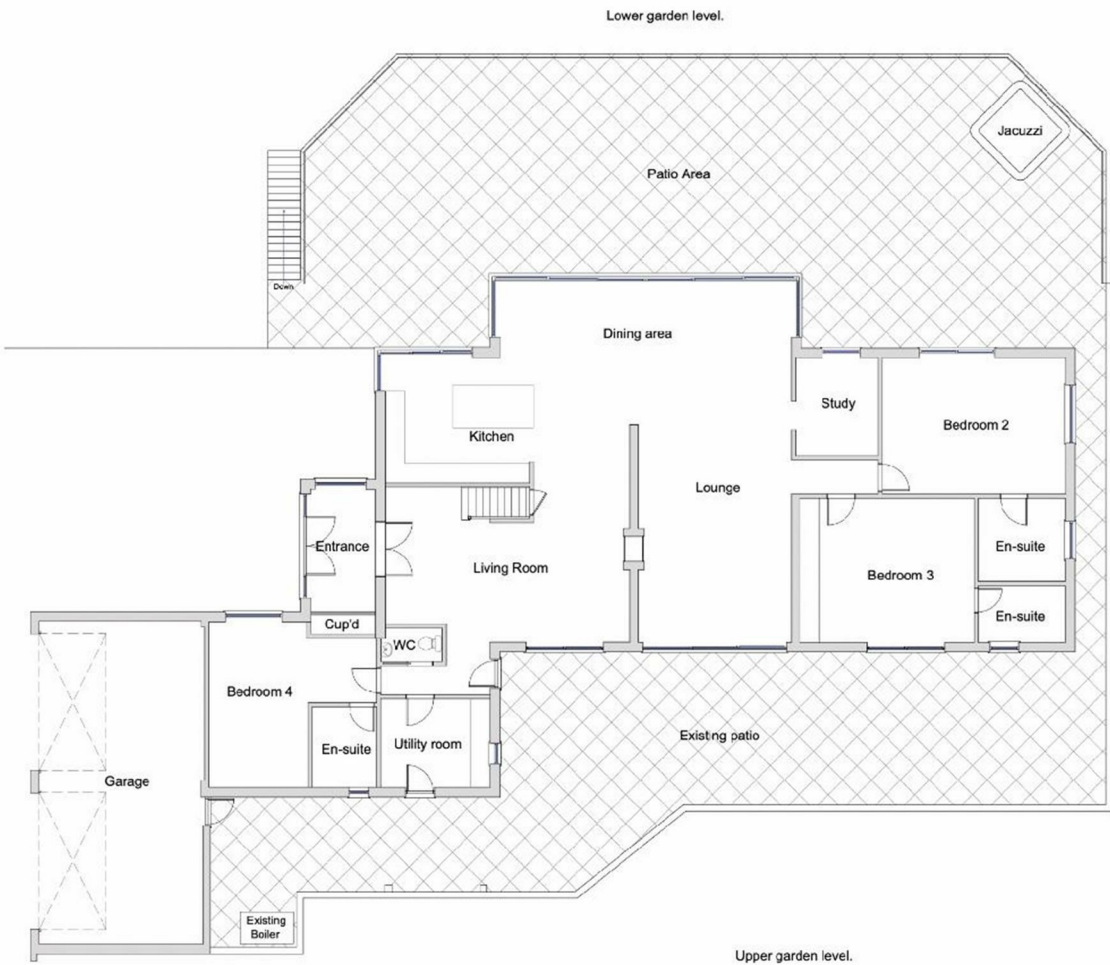
The house sits in it's own private and secluded extensive landscaped grounds, on what can only be termed as the "Super Prime Site" on the island







West elevation.

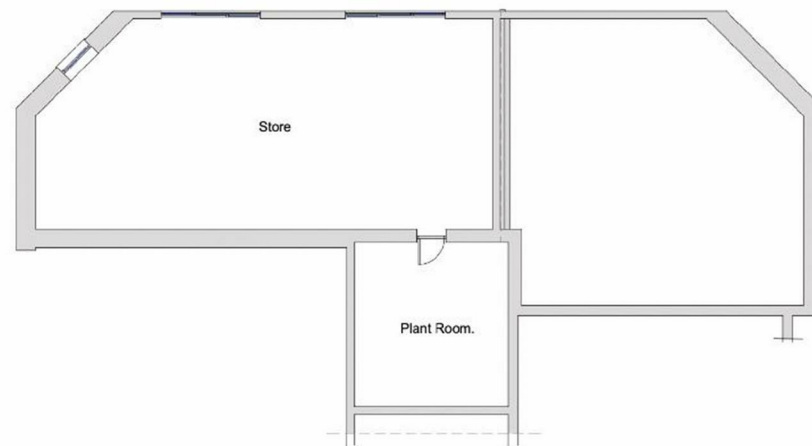


Ground floor plan.

South elevation.



First floor plan.



Basement floor plan.

Hawkesford Estate Agents
1 The Hughes, 24 - 26 Swan Street, Warwick, CV34 4BJ
01926 411 480 warwick@hawkesford.co.uk

