



Valongis | Alderney | GY9 3YW



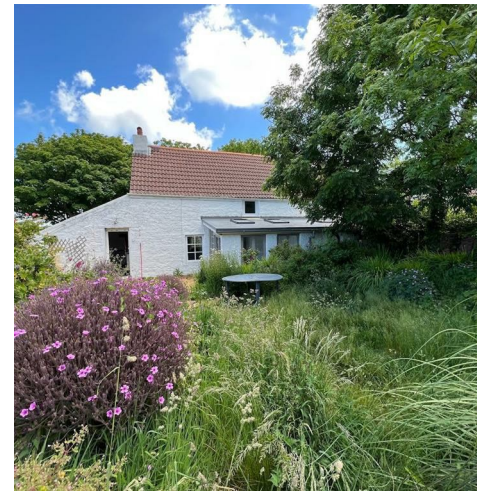
The property

REDUCED.

A wonderful Victorian cottage nestled in a quiet country lane, the property is warm and cosy in the winter and bright and airy in the summer.

The cottage has recently had an a new extension to the rear that accommodates a bright garden room and a large bathroom .

The cottage has a large lounge with an open fireplace, and a separate dining room, and a kitchen.





The first floor consists of two large double bedrooms and a bathroom

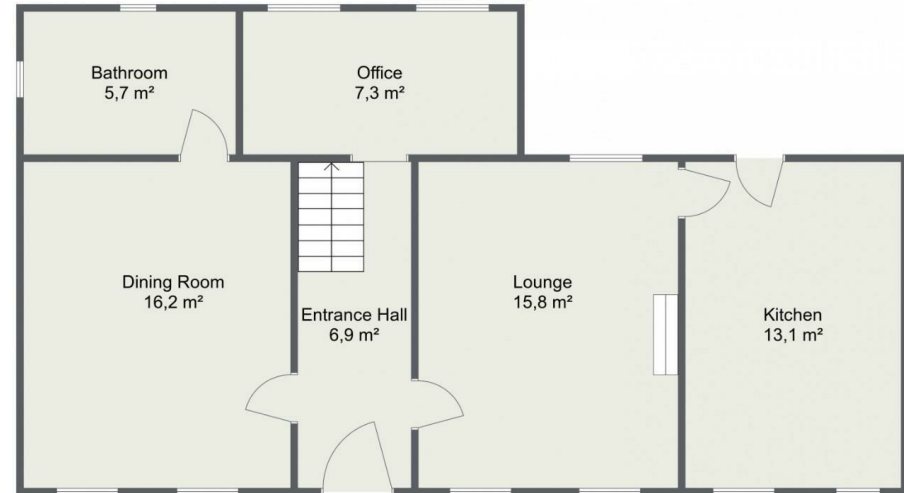
The cottage has an amazing wild flower garden that extends out to the West, the garden benefits from the sun all day from the South then the west and sunsets.

The property has an oil fired central heating system.

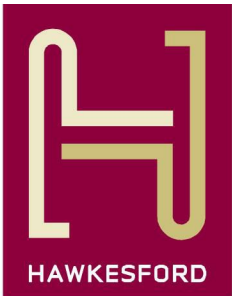
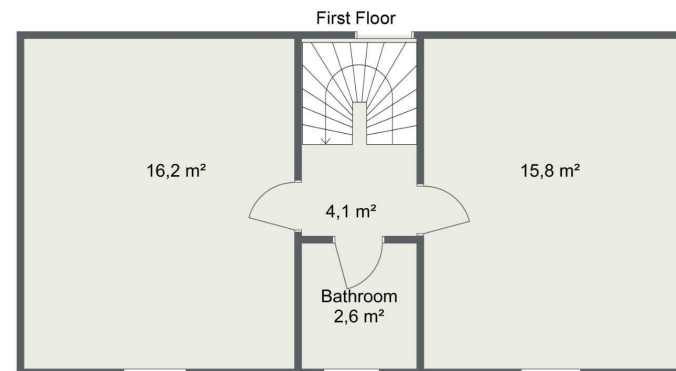




Katherines Cottage Ground Floor



Katherines Cottage



1 The Hughes, 24 - 26 Swan Street, Warwick, CV34 4BJ
warwick@hawkesford.co.uk

01926 411 480 www.hawkesford.co.uk

IMPORTANT: we would like to inform prospective purchasers that these sales particulars have been prepared as a general guide only. A detailed survey has not been carried out, nor the services, appliances and fittings tested. Room sizes should not be relied upon for furnishing purposes and are approximate. If floor plans are included, they are for guidance only and illustration purposes only and may not be to scale. If there are any important matters likely to affect your decision to buy, please contact us before viewing the property.