



Le Petit Val | | GY9 3UU

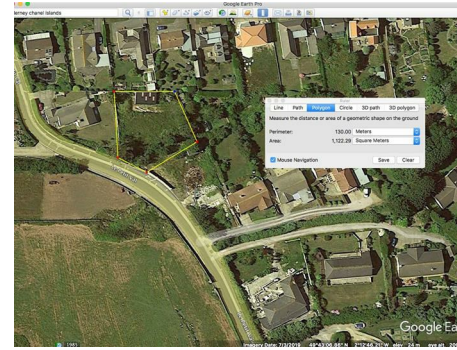
Guide price €225,000



Le Petit Val | | GY9 3UU

Building land at Rue de Saline, a wonderful opportunity to purchase a plot of land with sea views out across the bay of Platte Saline.

If you are looking to build your dream home by the sea, then this is it!



Building Land for sale, €225,000


Rue de Saline, the site could be retained as one large plot or subdivided into two plots.


The plot size is 1,122 m² or 12,072 sqft approximately. 0.27 of an acre approximately.

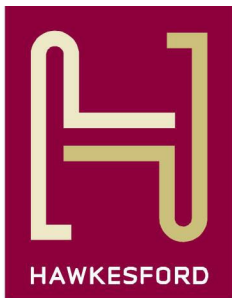


The site offers direct access off of the main road, and sea views out across Platte Saline Bay. This is one of the few buildings sites remaining on island with sea views.



Energy Efficiency Rating		
	Current	Potential
<i>Very energy efficient - lower running costs</i>		
(92 plus) A		
(81-91) B		
(69-80) C		
(55-68) D		
(39-54) E		
(21-38) F		
(1-20) G		
<i>Not energy efficient - higher running costs</i>		
England & Wales	EU Directive 2002/91/EC	

Environmental Impact (CO ₂) Rating		
	Current	Potential
<i>Very environmentally friendly - lower CO₂ emissions</i>		
(92 plus) A		
(81-91) B		
(69-80) C		
(55-68) D		
(39-54) E		
(21-38) F		
(1-20) G		
<i>Not environmentally friendly - higher CO₂ emissions</i>		
England & Wales	EU Directive 2002/91/EC	



1 The Hughes, 24 - 26 Swan Street, Warwick, CV34 4BJ
 warwick@hawkesford.co.uk

01926 411 480 www.hawkesford.co.uk

IMPORTANT: we would like to inform prospective purchasers that these sales particulars have been prepared as a general guide only. A detailed survey has not been carried out, nor the services, appliances and fittings tested. Room sizes should not be relied upon for furnishing purposes and are approximate. If floor plans are included, they are for guidance only and illustration purposes only and may not be to scale. If there are any important matters likely to affect your decision to buy, please contact us before viewing the property.