



# Barnehurst Road, Bexleyheath

1 BEDROOM FLAT

£950 PCM

Harpers & Co

We are delighted to offer this newly refurbished 1 bed flat which has been completed to an excellent and high standard. Fitted with a luxurious kitchen with integrated new fridge, integrated freezer, washing machine and electric hob and oven, offers excellent space. The flat benefits from a massive bedroom 4.5m x 4.5m with new fitted carpets throughout. The lounge is also very large and offers ample light. The quality and attention of detail of this flat ensures that the first to see, will rent. Reduced agents fees to the right applicant as an incentive. Professionals only, no pets or smokers.





# Barnehurst Road, Bexleyheath, Kent

**NEWLY CONVERTED 1 BED LUXURY FLAT | FULLY FITTED IMMACULATE KITCHEN | FULLY CARPETTED THROUGHOUT | ECONOMICAL TO RUN | DOUBLE GLAZING | GAS CENTRAL HEATING AND NEW RADS | OPPOSITE PARADE OF SHOPS | OPPOSITE BARNHURST TRAIN STATION 200 YARDS | AGENTS FEES REDUCED TO THE RIGHT APPLICANT | PROFESSIONALS ONLY**

## First Floor Landing 4' 0" x NaN' 0" (1.22m x 0.00m)

Fully carpeted throughout, chrome fixtures, chrome spotlights integrated smoke alarm, storage cupboards, hardwood polished banister, meter cupboard.

## Kitchen 10' 2" x 7' 7" (3.1m x 2.3m)

New Karndean flooring, 2 full length work tops, integrated, ceramic hob, oven and extractor fan, condensing boiler (Worcester), new full range of high quality white gloss kitchen cabinets, new stainless steel basin and drainer and waste, new freezer, new fridge, new washing machine, all under new 3 year guarantee.

## Lounge/Diner 13' 9" x 12' 5" (4.18m x 3.78m)

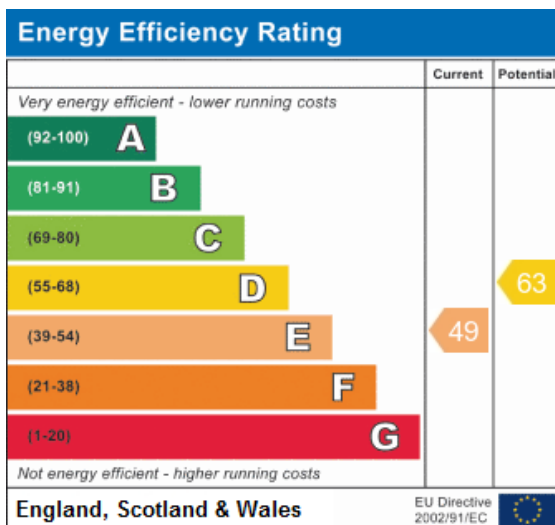
Fully carpeted with new carpet throughout, chrome switch plates, double glazing, large double size room.

## Shower room 6' 7" x 6' 7" (2m x 2m)

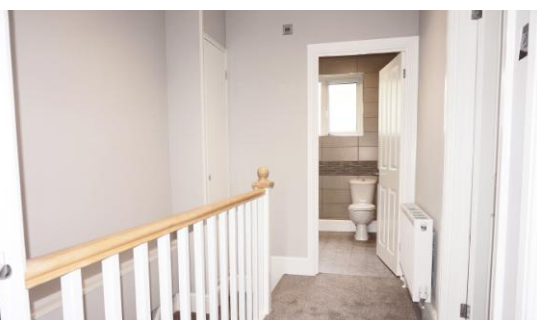
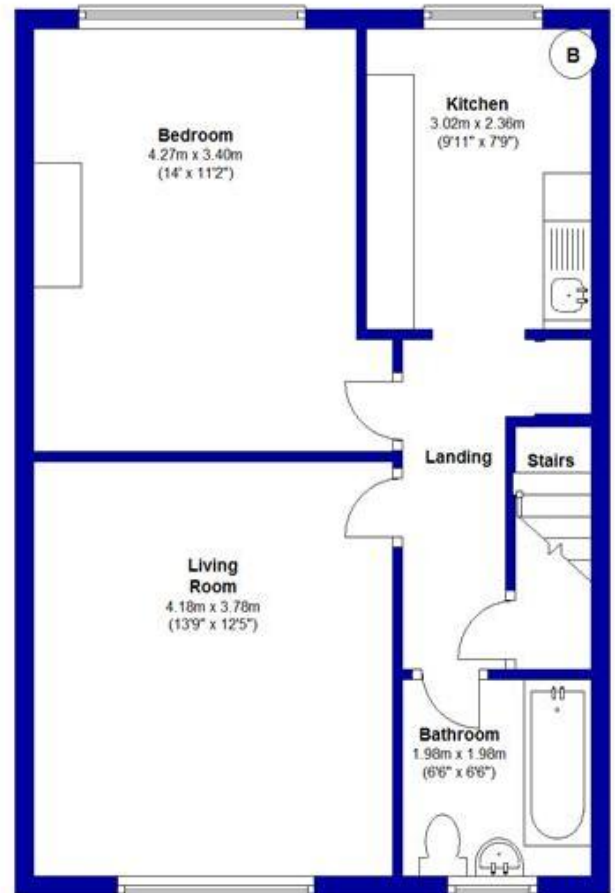
New vinyl flooring throughout, new porcelain low level basin with push button waste and integrated wall mirror in ceramic tiled walls, extractor, glass shower enclosure with chrome power shower. Chrome heated towel rail.

## Master Bedroom 13' 9" x 12' 5" (4.18m x 3.78m)

Fully carpeted throughout, spotlights to ceiling, UPVC windows with rear views.



First Floor



**Bexley / Bexleyheath Department**  
8 Bexley High Street  
Bexley  
DA5 1AD  
T: 01322 524425  
E: [info@harpersandco.com](mailto:info@harpersandco.com)

**Associate Park Lane**  
121 Park Lane  
Mayfair  
W1K 7AG  
T: 0207 409 4693  
E: [info@harpersandco.com](mailto:info@harpersandco.com)

**Harpers & Co**  
[harpersandco.com](http://harpersandco.com)

H1137