



LONGLEAT COURT

Harpers & Co

11 Upton Road, Bexleyheath, Greater London, DA6 8LF

Harpers & Co

Longleat Court

Bexleyheath

2 DOUBLE BEDROOM SECOND FLOOR APARTMENT |
IMMACULATE SPACIOUS LOUNGE | MODERN FITTED KITCHEN
| 2 DOUBLE BEDROOMS | BATHROOM | INTERCOM SYSTEM |
GREAT LOCATION | CLOSE TO BEXLEYHEATH STATION |
BROADWAY SHOPPING CENTRE & RESTAURANTS NEARBY |
EARLY VIEWINGS ADVISED

Upton Road, Bexleyheath
Immaculate & large 2 bed flat

Immaculate & spacious 2-bedroom flat in excellent central location within walking distance to Bexleyheath mainline train station with fast trains to London Bridge and Charring Cross and Broadway Bexleyheath.

Offered share of freehold with an annual service charge of approx £1000 pa. Harpers & Co are delighted to offer this sumptuous and large 2 bed flat in an enviable location in Bexleyheath.

This established block is well managed with attractive gardens surrounding.

Immediately one is struck by the size of the rooms and the light and airy feel. the reception room diner is well decorated and ample in size leading to a kitchen that is in good order with free standing appliances (untested). There is a good size balcony which leads from the reception room with good elevated views. The modern and luxurious bath/shower room is very well appointed and is in keeping with the rest of the flat's decoration.

The two double bedrooms are ample in size and again provide a light and airy feel to the flat. A garage is also offered by separate arrangement through the managing for circa £ 40 per month. ,

We love this flat and so will you. the vendor has found a property which is chain free and is open to a speedy sale.

Contact award winning sole agents Harpers & Co on 01322 524425 for a viewing by appointment.



Harpers & Co



Harpers & Co



Harpers & Co

Entrance hall 13' 1" x 4' 3" (4m x 1.3m)

Fully carpeted throughout, skirting, multiple plug points pendant light to ceiling.

Reception 14' 5" x 13' 1" (4.40m x 4.00m)

Open plan reception diner with large UPVC window with integrated blinds, curtains and curtain rails and access to good size balcony. Fully carpeted throughout, pendant lights to ceiling, store cupboard, multiple plug points and aerial socket.

Kitchen 10' 8" x 6' 3" (3.25m x 1.90m)

Grey Marble effect vinyl flooring throughout, wall and floor mounted kitchen units, kitchen counter tops, gas oven and hob (freestanding untested) multiple plug points, wall mounted boiler, ceramic basin with left hand drainer and chrome mixer taps, ceiling lights, UPVC window with attractive views. Free standing fridge freezer.

Bedroom 1 11' 2" x 10' 8" (3.41m x 3.25m)

Fully carpeted throughout, skirting, pendant light to ceiling, large double-glazed window, multiple plug points, elevated views.

Bedroom 2 11' 3" x 10' 2" (3.44m x 3.09m)

Fully carpeted throughout, skirting, pendant light to ceiling, large double-glazed window, multiple plug points, elevated views. free standing wardrobes.

Bathroom

Grey marble effect porcelain tiles, white over p shaped panelled bath with glass enclosure & amazon rain forest shower and hand-held shower also, basin in vanity unit with chrome mixer tap, wall mounted mirror. low level designer WC with push rod waste.

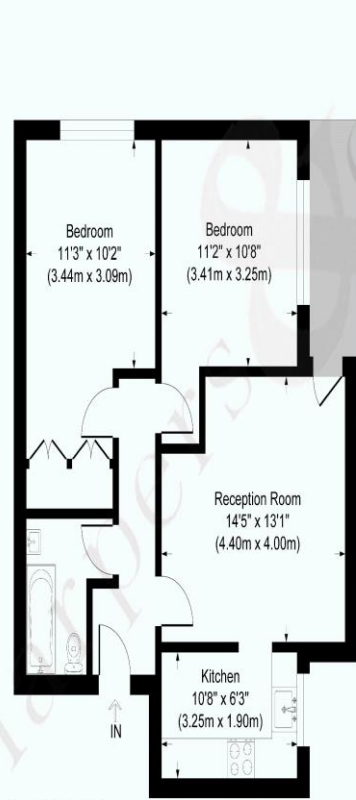
Harpers & Co Special Remarks

This fantastically located & large 2 bed flat is immaculate throughout and a credit to the current owner.

Commanding an elevated position with a good size balcony this flat offers excellent sized double bedrooms and a modern bathroom and kitchen.

We think this would suit first time buyers and those wanting an excellent location close to the mainline train station and within a short walk to Broadway Bexleyheath with its shopping centre and shops and restaurants.





Second Floor



Longleat Court

Approximate Gross Internal Area
Total = 61.9 sq m / 666 sq ft

This plan is for layout guidance only. Not drawn to scale unless stated. Windows and door openings are approximate. Whilst every care is taken in the preparation of this plan, please check all dimensions, shapes and compass bearings before making any decisions reliant upon them.



Insert Picture

Bexley / Bexleyheath Department

8 Bexley High Street
Bexley
DA5 1AD

T: 01322 524425

E: info@harpersandco.com

Associate Park Lane

121 Park Lane
Mayfair
W1K 7AG

T: 0207 409 4693

E: info@harpersandco.com

harpersandco.com

