



Welling High Street, Welling

1 BEDROOM FLAT

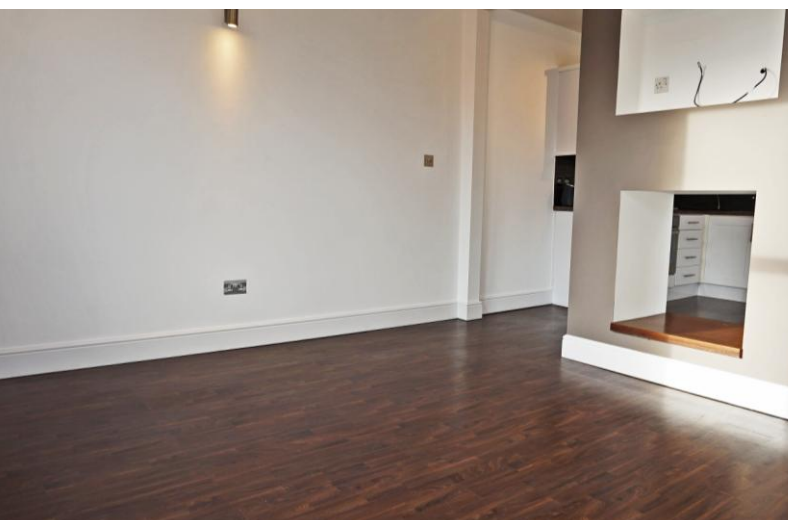
£850 PCM

Harpers & Co

Well specified and high quality 1 bedroom apartment located in the heart of Welling High Street & ideal for working professionals situated just 10 minutes from the station.

Harpers & Co is delighted to present this modern & immaculate apartment with open plan living. This stunning property is available immediately and consists of a lounge/diner, well specified kitchen, large master bedroom with integrated wardrobes & shower room with 3 piece suite.

Professionals only. No smokers, no pets, no DSS. Viewings through appointment only through sole agents Harpers & Co.



Welling High Street, Welling

STUNNING 1 BEDROOM APARTMENT | HIGH QUALITY FIXTURES & FITTINGS | IMMACULATE SHOWER ROOM | OPEN PLAN & WELL SPECIFIED KITCHEN | WELL LOCATED IN HEART OF WELLING HIGH STREET | 10 MINUTE WALK TO WELLING STATION | PROFESSIONALS ONLY, NO FAMILIES | NO SMOKERS, NO PETS, NO DSS | AVAILABLE IMMEDIATELY

Open Plan Lounge 13' 1" x 11' 10" (4.0m x 3.6m)

Two UPVC double glazed windows to front. Four spotlights. Laminate style flooring. Vertical Radiator. Two wall mounted lights. Skirting. Multiple power points throughout. TV point.

Open Plan Kitchen/Diner 13' 1" x 10' 6" (4.0m x 3.2m)

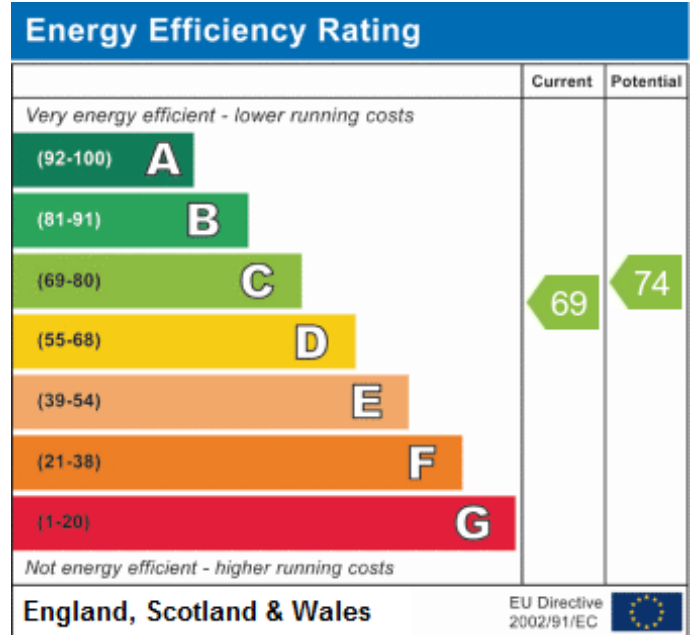
Laminate style flooring. Range of wall and base units with work surface over. Stainless steel sink unit with chrome mixer taps. Integrated electric oven and four ring gas hob. Integrated washing machine. Under cupboard lighting strips. Multiple power points.

Bedroom 11' 10" x 11' 10" (3.6m x 3.6m)

UPVC double glazed door to rear. Carpet. Spotlights to ceiling. Two wall mounted lights. Wall mounted radiator. Storage cupboard with Worcester boiler. Free standing mirrored wardrobe. Multiple power points.

Shower Room 8' 6" x 3' 3" (2.6m x 1.0m)

Tiled flooring. Low level WC. Hand basin with chrome taps. Shower with stainless steel fittings. Heated towel rail. Ceramic tiled walls.



Bexley / Bexleyheath Department
 8 Bexley High Street
 Bexley
 DA5 1AD
 T: 01322 524425
 E: info@harpersandco.com

Associate Park Lane
 121 Park Lane
 Mayfair
 W1K 7AG
 T: 0207 409 4693
 E: info@harpersandco.com

Harpers & Co
harpersandco.com