



Websters  
estate agents



# Lincoln Avenue, Twickenham, TW2 6NW

Mid Terrace 4 bedroom home in a popular residential area with driveway parking, a garden with rear access and no onward chain. Situated within 0.1 mile of Crane Park with a walking/cycle path along the River Crane into Twickenham and just 0.2 miles from the A316 with direct access to the M3/M25 and central London.

Extended, loft converted and tastefully presented to offer 1153 sq ft of living space over 3 floors with wood flooring downstairs, double glazed windows and doors and neutral decor throughout.

Entrance hallway leads the open plan living area with a bay fronted living room, a dining area and the fitted kitchen at the rear. A door opens onto the garden with a patio, lawn, shed storage and gated rear access.

On the first floor are 3 bedrooms, the family bathroom and stairs up to the main bedroom with an en-suite shower room and eaves storage.

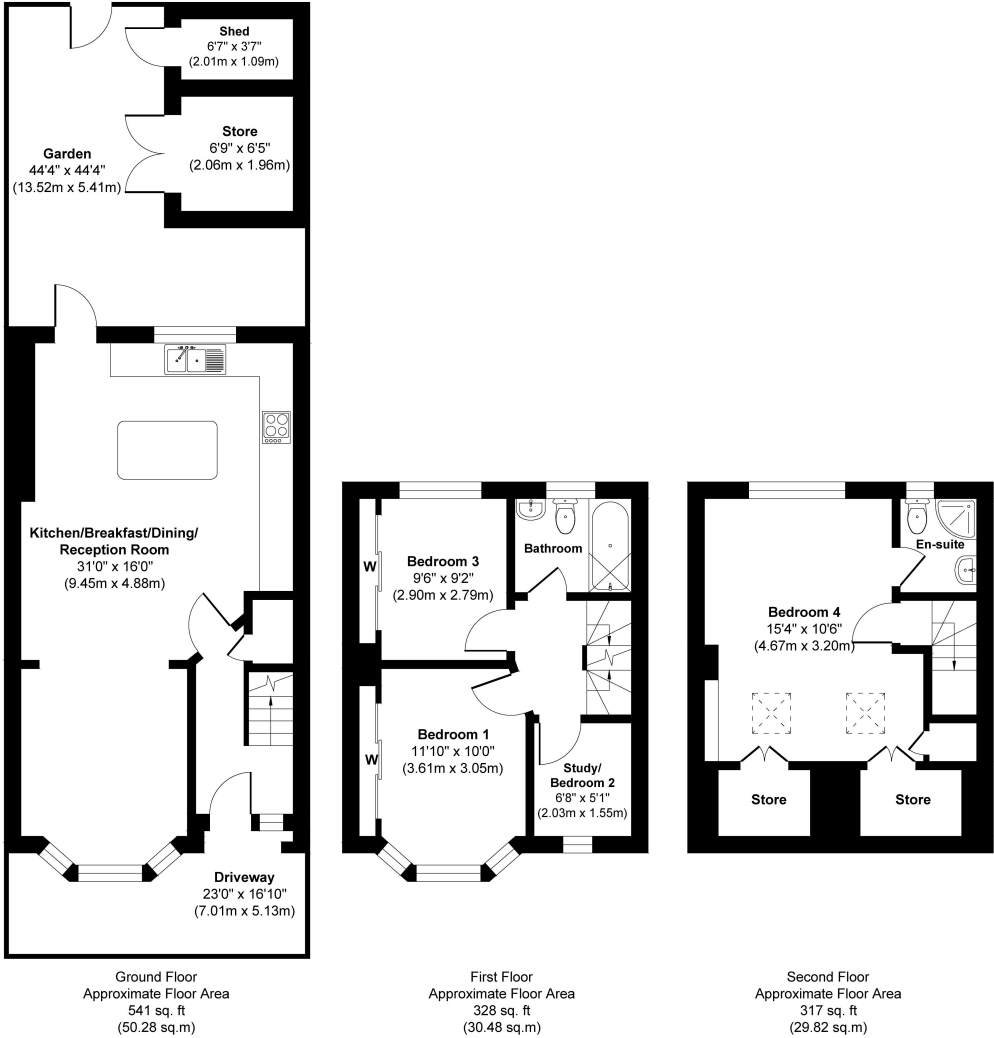
Located 0.5 miles from Waldegrave Girls School/Co-ed Sixth Form, within 0.7 miles of Trafalgar and St James Primary Schools and 0.7 miles from Whitton town centre and mainline train station.

EPC Rating C

- Mid Terrace 4 Bedroom Home
- 1153 Sq Ft of Living Space over 3 Floors
- No Onward Chain
- Driveway Parking Space
- Garden with Rear Gated Access
- 0.1 Mile from Crane Park
- Within 0.7 Miles of Popular Schools



186 Lincoln Avenue



Approx. Gross Internal Floor Area 1186 sq. ft / 110.58 sq. m



