



Websters
estate agents

Shaftesbury Way, Twickenham, TW2 5RW

Mid Terrace 4 bedroom Townhouse in a popular residential development with stunning communal grounds, driveway parking, a garage and a south facing garden. Situated within 0.5 miles of Archdeacon, Trafalgar, St James, The Mall and Waldegrave Girls/Co-ed Sixth Form.

With no onward chain, in need of some updating and offering 1487 sq ft of adaptable living space (including the garage) over 4 floors with large double glazed windows and doors, some parquet flooring and potential to reconfigure the layout and create a bespoke family home.

Entrance hallway leads to the w.c and into the dining area with access to the fitted kitchen at the front. Steps in the dining area lead down to the spacious light filled living room with doors opening onto the mature low maintenance garden. On the first floor are 2 double bedrooms, the front with an en-suite, the family bathroom and stairs up to 2 bedrooms and access to extensive eaves storage.

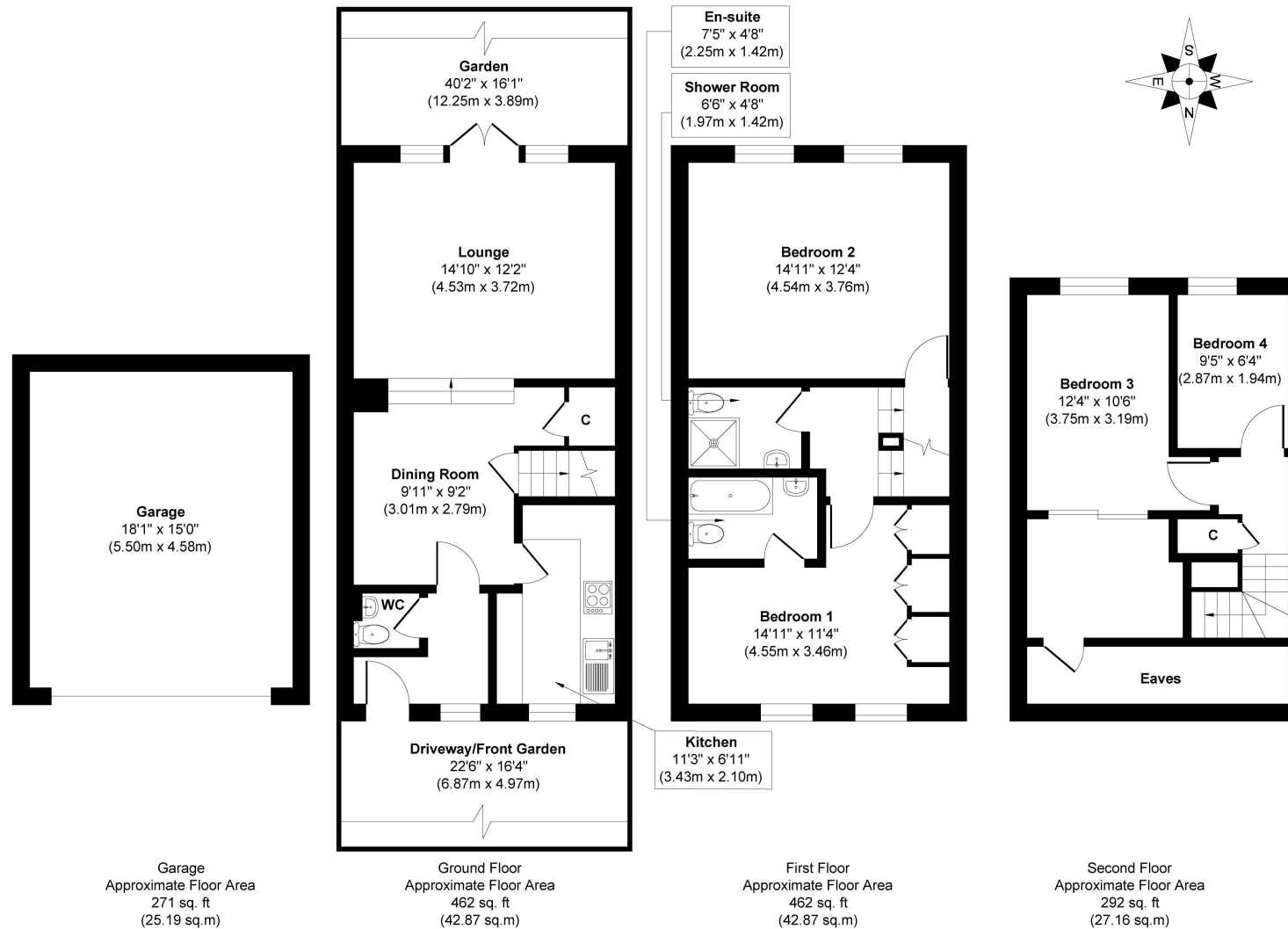
With remote controlled door access to the garage from the driveway and located 0.2 miles from local shops and cafes, 0.4 miles from Strawberry Hill train station and 0.5 miles from Twickenham Green.

EPC Rating C

- Mid Terrace 4 Bedroom Townhouse
- Driveway Parking and Garage
- South Facing Garden
- 1487 Sq Ft of Living Space (including garage)
- In Need of Some Updating
- No Onward Chain
- Within 0.5 Miles of Popular Schools
- 0.4 Miles from Strawberry Hill Station



Shaftesbury Way, TW2



a Websters Estate Agents 36 Broad Street, Teddington, Middlesex TW11 8QY

t 020 8614 6000

e sales@mywebsters.co.uk **w** mywebsters.co.uk

Disclaimer

These particulars, whilst believed to be accurate are set out as a general outline only for guidance and do not constitute any part of an offer or contract. Intending purchasers should not rely on them as statements of representation of fact, but must satisfy themselves by inspection or otherwise as to their accuracy. We have not carried out a detailed survey nor tested the services, appliances and specific fittings. Room sizes should not be relied upon for carpets and furnishings. The measurements given are approximate. No person in this firm's employment has the authority to make or give any representation or warranty in respect of the property.

