

TEL: 020 8894 1799



20

**Websters**  
estate agents



# Bedford Road, Twickenham, TW2 5EW

Mid Terrace 3 double bedroom newly refurbished home in a popular residential area with a home office/studio room in the garden. Situated just 50 metres from Waldegrave Girls/Co-ed Sixth Form and within 0.5 miles of St James's, Stanley, Tafalgar and Archdeacon Schools.

Extended and completely refurbished to an impressive standard to offer 1217 sq ft of immaculately presented living space over 2 floors with high specification fixtures, fittings and floorings, energy efficient heating, lighting and appliances, external wall insulation, double glazed windows and doors and neutral decor throughout.

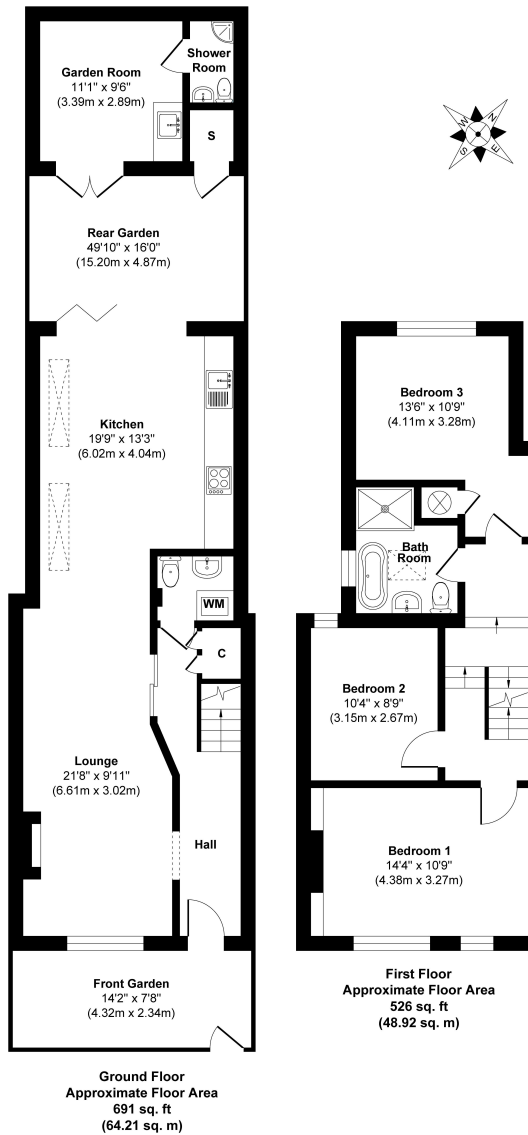
Entrance hallway leads to the w.c/laundry room and the dual aspect open plan family room with a living area at the front, space for a study, a dining area and a stylish bespoke fitted kitchen. Full width folding doors open onto the landscaped garden with a patio, lawn and purpose built garden room/home office with a kitchenette and shower room. On the first floor are 3 double bedrooms and the luxury family bathroom

Located 0.2 miles from local shops and bus stops, 0.5 miles from Twickenham Green and Strawberry Hill and Fulwell train stations and 0.9 miles from the A316 with direct access to the M25, M3 and central London.

EPC Rating C

- Mid Terrace 3 Double Bedroom Home
- Extended and Completely Refurbished
- Garden Room with Kitchenette and Shower Room
- 1217 Sq Ft of Living Space over 2 Floors
- High Specification Throughout
- Close to Numerous Popular Schools
- 0.5 Miles from Strawberry Hill Station





**a** Websters Estate Agents 36 Broad Street, Teddington, Middlesex TW11 8QY

**t** 020 8614 6000

**e** sales@mywebsters.co.uk **w** mywebsters.co.uk

**Disclaimer**

These particulars, whilst believed to be accurate are set out as a general outline only for guidance and do not constitute any part of an offer or contract. Intending purchasers should not rely on them as statements of representation of fact, but must satisfy themselves by inspection or otherwise as to their accuracy. We have not carried out a detailed survey nor tested the services, appliances and specific fittings. Room sizes should not be relied upon for carpets and furnishings. The measurements given are approximate. No person in this firm's employment has the authority to make or give any representation or warranty in respect of the property.



