



Websters  
estate agents

# Lion Road, Twickenham, TW1 4JF

Mid Terrace 3 double bedroom Victorian home with a mature 63ft garden and a home office. Situated in a popular residential location just 0.2 miles from Twickenham Green, shops, cafes and restaurants. Situated within 0.4 miles of Archdeacon, TPA and St Richard Reynolds and less than 0.9 miles from Trafalgar, St James's and Waldegrave Girls/Co-ed Sixth Form.

Immaculately presented to offer 1252 sq ft of living space over 3 floors with high specification fixtures, fittings and floorings, double glazed sash style windows, feature fireplaces, energy efficient heating and lighting and stylish contemporary decor throughout.

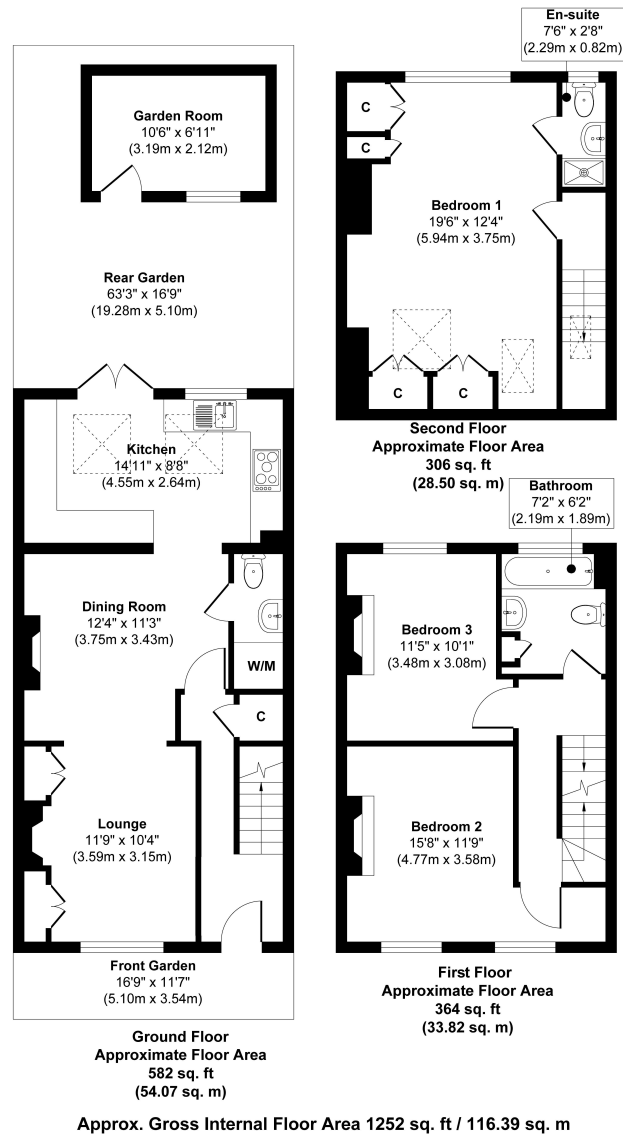
Entrance hallway leads to the open plan dual aspect living space with a bay fronted sitting room, dining room, w.c/utility room and a stylish integrated kitchen. Double doors open onto the garden with a patio, lawn, mature planting, the home office and shed storage. On the first floor are 2 double bedrooms, the family bathroom and stairs up to the main bedroom with an en-suite shower room, built in and eaves storage.

Located 0.6 miles from Twickenham town centre and train station, Strawberry Hill station, Church Street shops, restaurants and Twickenham Riverside with a towpath walk past Marble Hill Park to Richmond upon Thames  
EPC Rating D

- Mid Terrace Victorian Home
- 3 Double Bedrooms and 2 Bathrooms
- 63 Ft Garden with Home Office
- Well Balanced Living Space over 3 Floors
- Immaculately Presented Throughout
- 0.2 Miles from Twickenham Green
- Within 0.9 Miles of Popular Schools



Lion Road, TW1



Disclaimer

These particulars, whilst believed to be accurate are set out as a general outline only for guidance and do not constitute any part of an offer or contract. Intending purchasers should not rely on them as statements of representation of fact, but must satisfy themselves by inspection or otherwise as to their accuracy. We have not carried out a detailed survey nor tested the services, appliances and specific fittings. Room sizes should not be relied upon for carpets and furnishings. The measurements given are approximate. No person in this firm's employment has the authority to make or give any representation or warranty in respect of the property.

