



P Resident permit holders only

57

59

61

Websters  
estate agents



# Heath Gardens, Twickenham, TW1 4LY

Semi Detached 4 bedroom Victorian family home in a popular residential location just 0.3 miles from Twickenham Green, local shops, cafes and restaurants, 0.5 miles from Archdeacon, TPA and St Richard Reynolds and less than 0.9 miles from Trafalgar, St James and Waldegrave Girls/Co-ed Sixth Form.

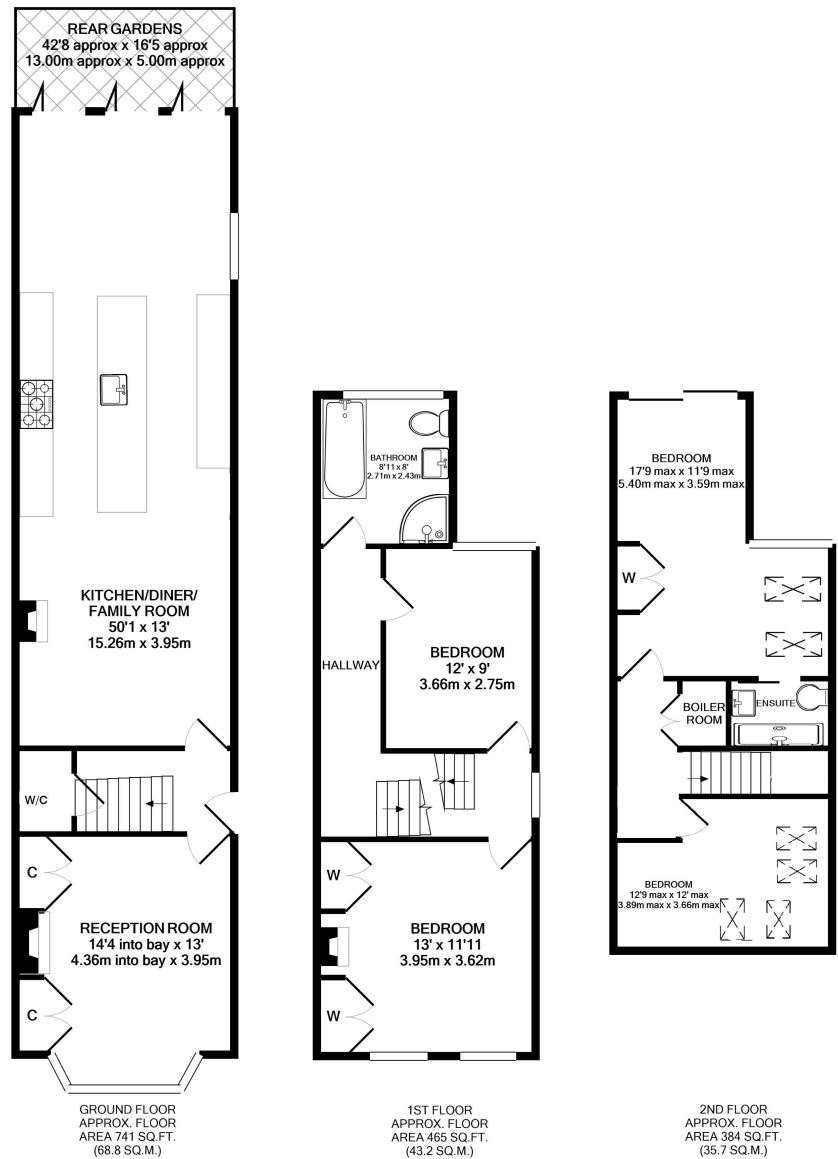
With no onward chain and tastefully presented home offering 1590 sq ft of living space over 3 floors with high specification fixtures, fittings and floorings, double glazed windows and doors, energy efficient heating, lighting and appliances, extensive built in storage and stylish decor throughout.

Entrance hallway leads to the bay fronted living room, downstairs w.c and the open plan kitchen/family room at the rear. This fabulous light filled room has a family seating area, bespoke integrated kitchen and space for dining. Folding doors open onto the garden with a patio, lawn, shed storage and secure gated side access. On the first floor are 2 bedrooms and the luxury family bathroom with stairs up to 2 further bedrooms, the main room with an en-suite shower room, seating area and large picture windows overlooking gardens.

Located just 0.5 miles from Twickenham town centre and Strawberry Hill Village/train station and 0.8 miles from Twickenham mainline station.  
EPC Rating D

- Semi Detached 4 Bedroom Home
- 1590 Sq Ft of Living Space over 3 Floors
- No Onward Chain
- Impressive High Specification Throughout
- Living Room and Kitchen/Dining/Family Room
- 0.3 Miles From Twickenham Green
- 0.8 Miles from Twickenham Station
- Within 0.9 Miles of Popular Schools





TOTAL APPROX. FLOOR AREA 1590 SQ.FT. (147.7 SQ.M.)

**a** Websters Estate Agents 36 Broad Street, Teddington, Middlesex TW11 8QY **t** 020 8614 6000 **e** sales@mywebsters.co.uk **w** mywebsters.co.uk

**Disclaimer**

These particulars, whilst believed to be accurate are set out as a general outline only for guidance and do not constitute any part of an offer or contract. Intending purchasers should not rely on them as statements of representation of fact, but must satisfy themselves by inspection or otherwise as to their accuracy. We have not carried out a detailed survey nor tested the services, appliances and specific fittings. Room sizes should not be relied upon for carpets and furnishings. The measurements given are approximate. No person in this firm's employment has the authority to make or give any representation or warranty in respect of the property.



