



Websters
estate agents

Brunswick Close, Twickenham, TW2 5ND

Mid Terrace 3 bedroom home in a popular residential cul-de-sac with a private south west facing garden, communal grounds and residents permit parking. Situated just 0.1 mile from local shops and cafes, within 0.2 miles of St James's and Waldegrave Girls/Co-ed sixth form and 0.5 miles from Stanley, Archdeacon and Trafalgar Schools.

With no onward chain and tastefully presented to offer 1097 sq ft of well balanced living space over 3 floors with modern fixtures, fittings and floorings, double glazed windows and doors, built in storage and neutral decor throughout.

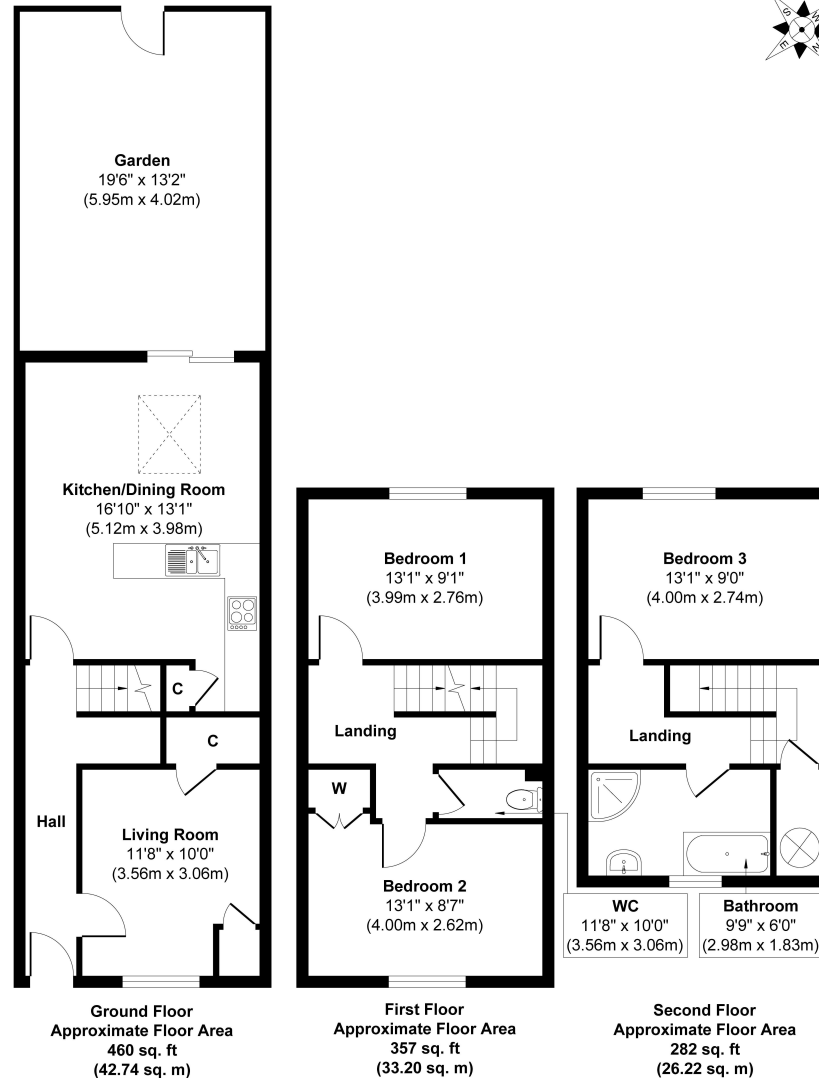
Entrance hallway leads to the living room at the front and the spacious open plan kitchen/family room at the rear with a tiled floor, modern fitted kitchen, velux roof window and space for dining and seating. Sliding doors open onto the low maintenance paved garden with gated rear access. On the first floor are 2 double bedrooms, a w.c and stairs up to the large family bathroom and third bedroom.

Located 0.5 miles from Twickenham Green, Fulwell and Strawberry Hill train stations and 0.8 miles from Hampton Hill High Street
EPC Rating D

- Mid Terrace 3 Double Bedroom Home
- Private Garden and Communal Grounds
- No Onward Chain
- 1097 Sq Ft of Living Space over 3 Floors
- Residents Permit Parking
- 0.5 Miles from Strawberry Hill and Fulwell Stations
- Within 0.5 Miles of Popular Schools



Brunswick Close, TW2



Approx. Gross Internal Floor Area 1,099 sq. ft / 102.16 sq. m

a Websters Estate Agents 36 Broad Street, Teddington, Middlesex TW11 8QY **t** 020 8614 6000 **e** sales@mywebsters.co.uk **w** mywebsters.co.uk

Disclaimer
 These particulars, whilst believed to be accurate are set out as a general outline only for guidance and do not constitute any part of an offer or contract. Intending purchasers should not rely on them as statements of representation of fact, but must satisfy themselves by inspection or otherwise as to their accuracy. We have not carried out a detailed survey nor tested the services, appliances and specific fittings. Room sizes should not be relied upon for carpets and furnishings. The measurements given are approximate. No person in this firm's employment has the authority to make or give any representation or warranty in respect of the property.

