



Websters
estate agents

Hamilton Road, Twickenham, TW2 6SN

Mid Terrace 2 double bedroom Victorian home in a popular quiet cul-de-sac location only 0.2 miles from Twickenham Green, local shops, cafes and restaurants, 0.5 miles from Twickenham town centre and within 0.6 miles of Archdeacon, Trafalgar, TPA and St Richard Reynolds and 0.9 miles from Waldegrave Girls School/Co-ed Sixth Form.

Tastefully presented to offer 874 sq ft of well balanced living space over 2 floors with modern fixtures and fittings, period features, sash style windows and potential to reconfigure the layout on the ground floor and loft convert (subject to Planning Permission and Building Regulations) to create a bespoke family home.

Front door opens into the bay fronted living room with a feature fireplace, built in storage and access to the dining room at the rear. This spacious room leads into the kitchen with modern fitted units and a lobby area with doors to the bathroom and the low maintenance garden. On the first floor are 2 double bedrooms, the study room, a w.c and hatch access to loft storage.

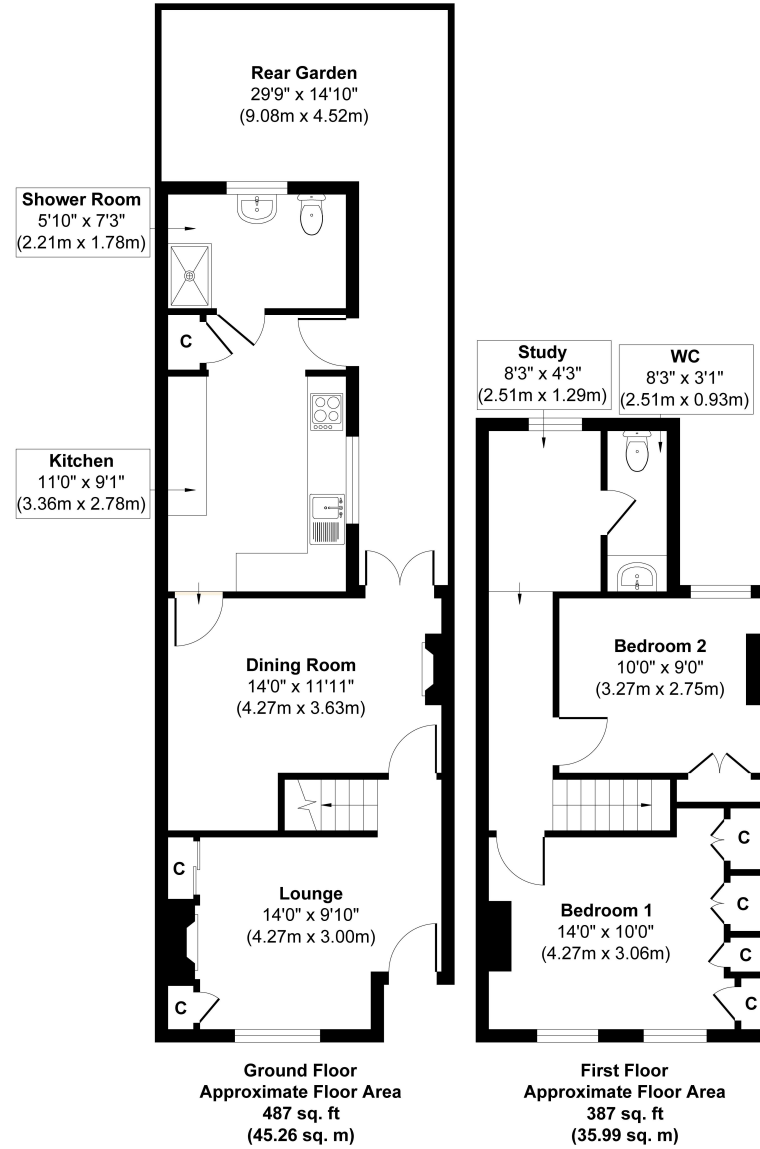
Located only 0.6 miles from Twickenham riverside with a walking/cycle track along the Thames past Marble Hill Park to Richmond and just 0.7 miles from Strawberry Hill and Twickenham mainline train stations.

EPC Rating D

- Mid Terrace Victorian Home
- 2 Double Bedrooms and a Study
- 874 Sq Ft of Living Space over 2 Floors
- Potential to Reconfigure and Loft Convert (stpp)
- 2 Living Rooms and Separate Kitchen
- 0.2 Miles from Twickenham Green
- Close to Numerous Popular Schools



Hamilton Road, TW2



Approx. Gross Internal Floor Area 874 sq. ft / 81.25 sq. m

a Websters Estate Agents 36 Broad Street, Teddington, Middlesex TW11 8QY

t 020 8614 6000

e sales@mywebsters.co.uk w mywebsters.co.uk

Disclaimer

These particulars, whilst believed to be accurate are set out as a general outline only for guidance and do not constitute any part of an offer or contract. Intending purchasers should not rely on them as statements of representation of fact, but must satisfy themselves by inspection or otherwise as to their accuracy. We have not carried out a detailed survey nor tested the services, appliances and specific fittings. Room sizes should not be relied upon for carpets and furnishings. The measurements given are approximate. No person in this firm's employment has the authority to make or give any representation or warranty in respect of the property.

