



Websters
estate agents

Norcutt Road, Twickenham, TW2 6SR

Mid Terrace 3 bedroom Victorian family home in a popular residential area just 0.2 miles from Twickenham Green, local shops and restaurants and only 0.7 miles from Strawberry Hill and Twickenham mainline train stations.

Extended at the rear and loft converted to offer 809 sq ft of well balanced living space over 3 floors with a high specification fixtures, fittings and floorings, period features, sash windows with plantation shutters at the front, built in storage and tasteful neutral decor throughout.

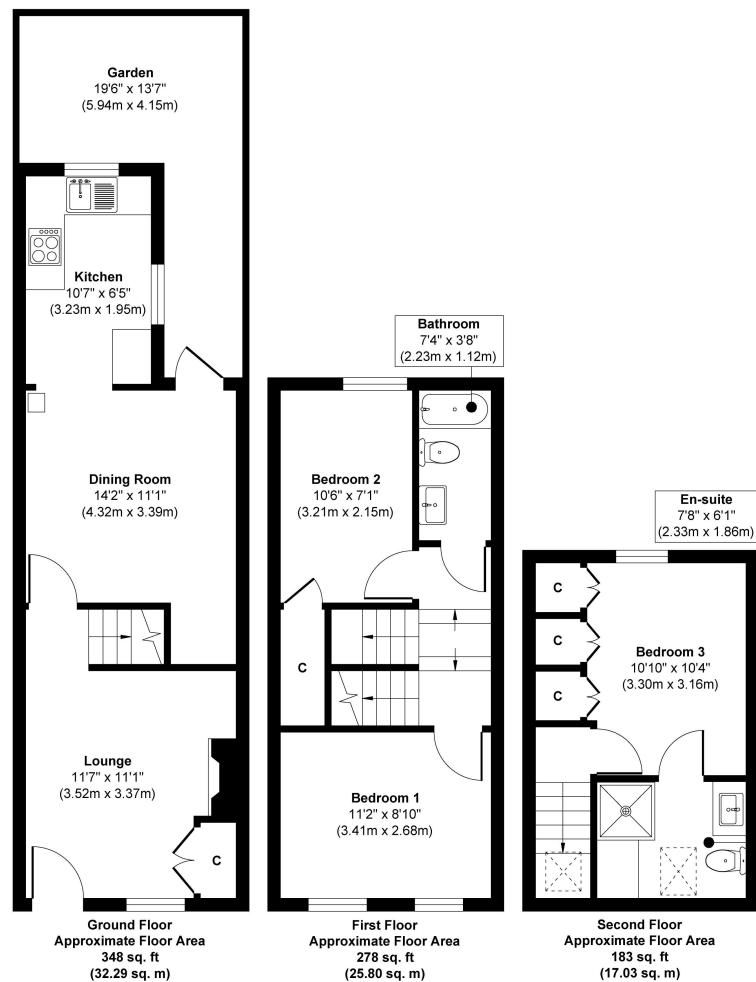
Front door opens into the living room with original wood flooring, storage, a wood burning stove and access past the stairs into the dining room. This well planned room has a feature brick chimney, an understairs snug/study area and access to the fitted kitchen at the rear with a recently fitted roof lantern. A door opens into the garden via a covered utility/storage area which leads to the secluded courtyard area with seating. On the first floor are 2 bedrooms, the stylish family bathroom and stairs leading up to the main bedroom with built in storage and an en-suite shower room.

Located 0.3 miles from Archdeacon and Twickenham Primary Academy, 0.6 miles from Trafalgar Primary and St Richard Reynolds School and within 0.7 miles of Twickenham town centre, Church Street and Twickenham Riverside with a towpath walk along the Thames past Marble Hill Park to Richmond.

EPC Rating C

- Mid Terrace Victorian Home
- 3 Bedrooms and 2 Bathrooms
- 809 Sq Ft of Living Space over 3 Floors
- 2 Living Rooms and Separate Kitchen
- Courtyard Garden with Covered Storage Area
- Less than 0.6 Miles from Popular Schools
- 0.7 Miles from Twickenham Train Station





Approx. Gross Internal Floor Area 809 sq. ft / 75.12 sq. m

Disclaimer

These particulars, whilst believed to be accurate are set out as a general outline only for guidance and do not constitute any part of an offer or contract. Intending purchasers should not rely on them as statements of representation of fact, but must satisfy themselves by inspection or otherwise as to their accuracy. We have not carried out a detailed survey nor tested the services, appliances and specific fittings. Room sizes should not be relied upon for carpets and furnishings. The measurements given are approximate. No person in this firm's employment has the authority to make or give any representation or warranty in respect of the property.

