

# BEN ROSE



**Market Place, Chorley**

**£866 PCM**

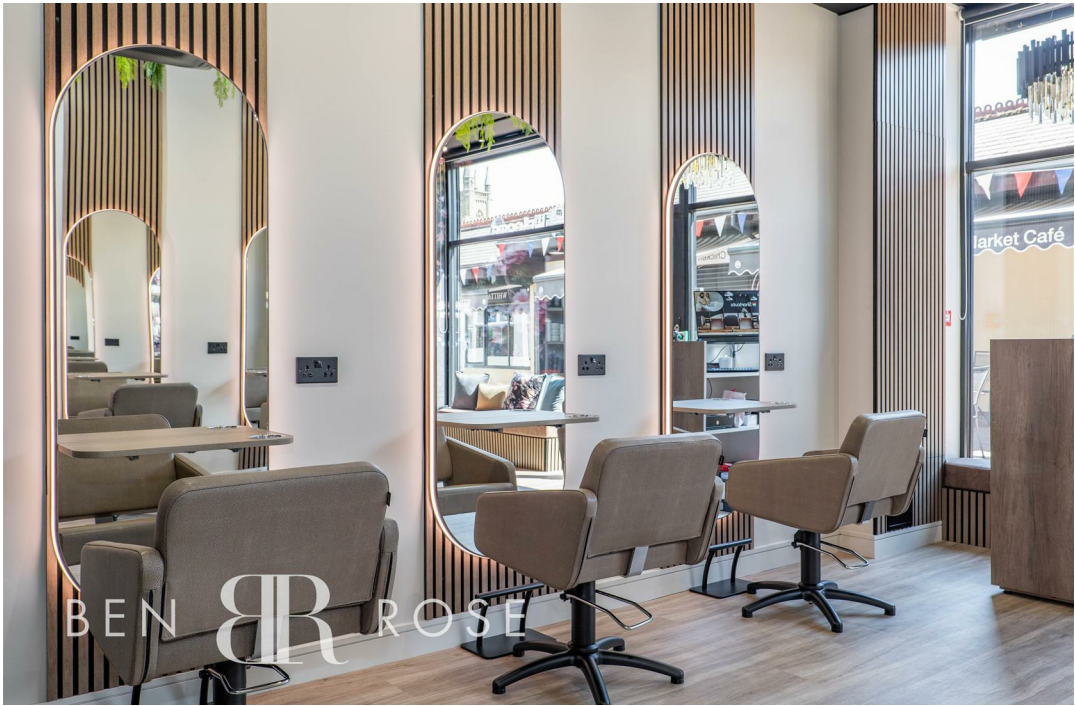
**\*\*This listing is to rent one of three chairs in a modern and newly opened hair salon in Chorley town centre. Each chair will be available for £40 per day with a minimum of three days to be worked - please contact us for more information\*\***

Ben Rose Estate Agents are pleased to present to the market a unique opportunity to rent a chair in the newly renovated and opened hair salon, 'Nat Hair & Co' in the heart of Chorley Town Centre. This is an ideal opportunity for hairdressers in the area to work in one of the most popular and busiest areas of Chorley, situated across from the famous Chorley markets.

Those who do rent a chair will benefit from modern fixtures and fittings with a communal kitchen and store room, with each occupant having their own allocated storage area. The salon comes fully stocked with 'Neal & Wolf' products for use with customers, aircon system and there is even laundry available. For added peace of mind, there is also CCTV throughout.

For more information about this incredible opportunity, please contact our lettings team.
















# BEN ROSE

We do our best to ensure that our sales particulars are accurate and are not misleading but this is for general guidance and complete accuracy cannot be guaranteed. We are not qualified to verify tenure of a property and prospective purchasers should seek clarification from their solicitor. all measurements and land sizes are quoted approximately. The mention of any appliances, fixtures and fittings does not imply they are in working order.

Energy Efficiency Rating		
	Current	Potential
Very energy efficient - lower running costs		
(92 plus) A		
(81-91) B		
(69-80) C		
(55-68) D		
(39-54) E		
(21-38) F		
(1-20) G		
Not energy efficient - higher running costs		
England & Wales	EU Directive 2002/91/EC	

Environmental Impact (CO <sub>2</sub> ) Rating		
	Current	Potential
Very environmentally friendly - lower CO <sub>2</sub> emissions		
(92 plus) A		
(81-91) B		
(69-80) C		
(55-68) D		
(39-54) E		
(21-38) F		
(1-20) G		
Not environmentally friendly - higher CO <sub>2</sub> emissions		
England & Wales	EU Directive 2002/91/EC	