



Snipewood, Eccleston, Chorley

Offers Over £199,995

Ben Rose Estate Agents are thrilled to present this charming no chain, semi-detached two-bedroom bungalow, perfectly positioned in the picturesque village of Eccleston. Offering superb outdoor space and fantastic seclusion, this home is an excellent opportunity for a couple or small family. While some modernisation is required, its prime location provides easy access to excellent local amenities, beautiful parks, and highly regarded schools, all just moments away. Early viewing is highly recommended to avoid disappointment.

Step inside to find an inviting entrance hall leading into a spacious lounge, bathed in natural light from a large front-facing window and featuring a newly fitted fireplace. From here, a hallway connects the remaining rooms. To the rear, both double bedrooms overlook the garden, with the master being particularly generous in size. The three-piece family bathroom includes a bath with a conveniently placed storage cupboard just off the hall.

At the heart of the home, the open-plan kitchen and dining area provide ample space, with room for a large dining table, plenty of wall and base units, space for freestanding appliances, and direct access to the side of the property.

Externally, the driveway accommodates two to three vehicles and leads to a single detached garage. The rear garden is a fantastic size, featuring both a lawn and a patio area, offering privacy as it is not overlooked. The front garden is well-maintained and easy to care for, completing the appeal of this delightful bungalow.







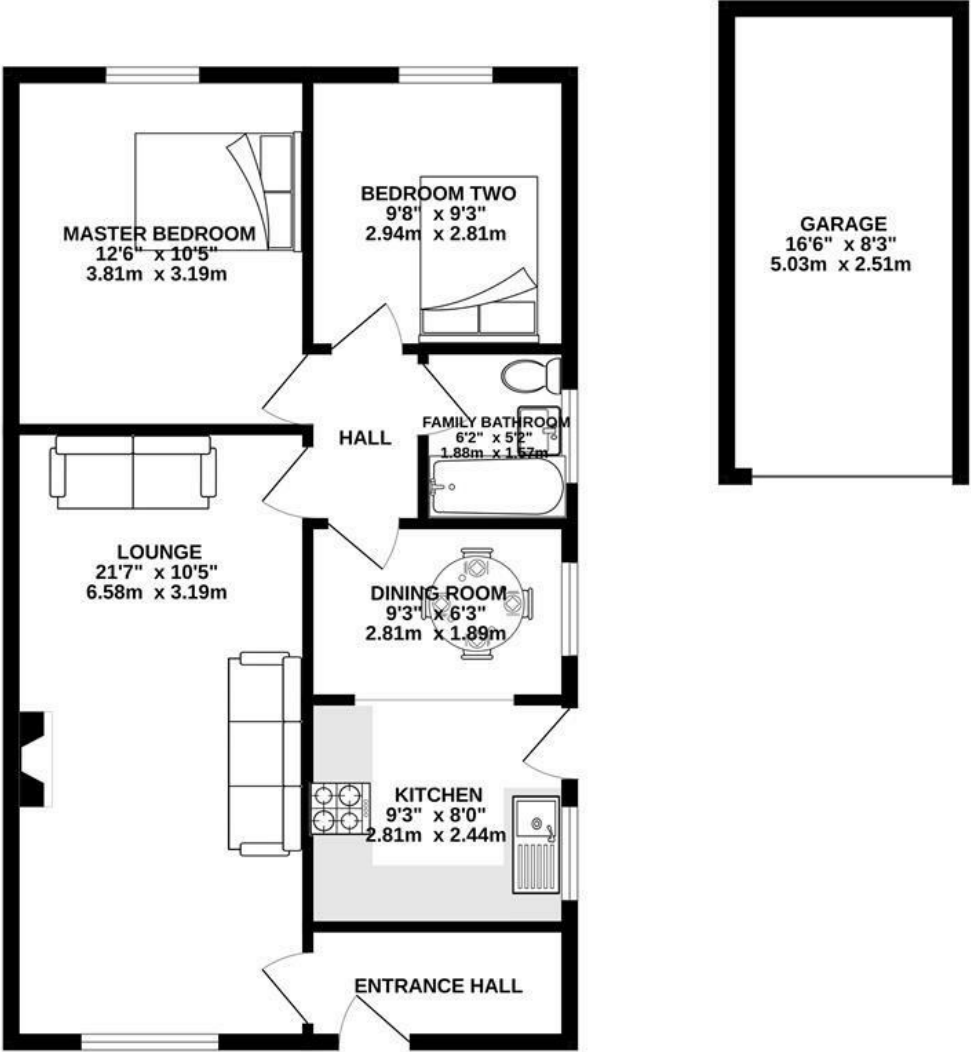






BEN ROSE

GROUND FLOOR
803 sq.ft. (74.6 sq.m.) approx.



TOTAL FLOOR AREA : 803 sq.ft. (74.6 sq.m.) approx.
Whilst every attempt has been made to ensure the accuracy of the floorplan contained here, measurements of doors, windows, rooms and any other items are approximate and no responsibility is taken for any error, omission or mis-statement. This plan is for illustrative purposes only and should be used as such by any prospective purchaser. The services, systems and appliances shown have not been tested and no guarantee as to their operability or efficiency can be given.
Made with Metropix ©2025



We do our best to ensure that our sales particulars are accurate and are not misleading but this is for general guidance and complete accuracy cannot be guaranteed. We are not qualified to verify tenure of a property and prospective purchasers should seek clarification from their solicitor. all measurements and land sizes are quoted approximately. The mention of any appliances, fixtures and fittings does not imply they are in working order.

