



Finch Drive, Buckshaw Village, Chorley

Offers Over £179,995

Ben Rose Estate Agents are pleased to present to market this beautiful, three bedroom, town house property set over three floors and located on a much sought after residential area in Buckshaw Village. This would be an ideal property for a couple or small family offering great space throughout. The property is ideally placed only a short drive to both the towns of Chorley and Leyland and is surrounded by superb local schools, shops and amenities. There is also fantastic travel links via the nearby Buckshaw Parkway train station and the M6 and M61 motorways. Viewing at earliest convenience is highly recommended to avoid any potential disappointment.

Internally, the property briefly comprises of a welcoming entrance hall that leads straight into the open plan ground floor. Here, you'll find the lounge with rear garden access via the patio doors. Adjacent, the modern kitchen features integrated appliances such as a hob/oven and fridge freezer with room for additional freestanding appliances. There is also a beautiful centre piece breakfast bar that separates both rooms. Just off the lounge is the convenient downstairs WC, along with bespoke under the stair storage.

Moving up to the first floor, you'll find two of the three bedrooms. Bedroom two can fit a double bed whilst bedroom three has been configured to be used as a dressing room, home office or study. You'll also find the three piece family bathroom on this floor with an over the bath shower.

Moving up to the second floor, you'll find the master bedroom. The master is of a good size, comfortably accommodates a double bed and benefits from Velux windows. The second floor also benefits from integral wardrobe/storage cupboard found off the landing.

Externally, to the rear of the property is a good sized garden with a large laid lawn and patio area. To the front you'll find room for two cars off road.



BEN  ROSE



BEN  ROSE



BEN  ROSE



BEN  ROSE

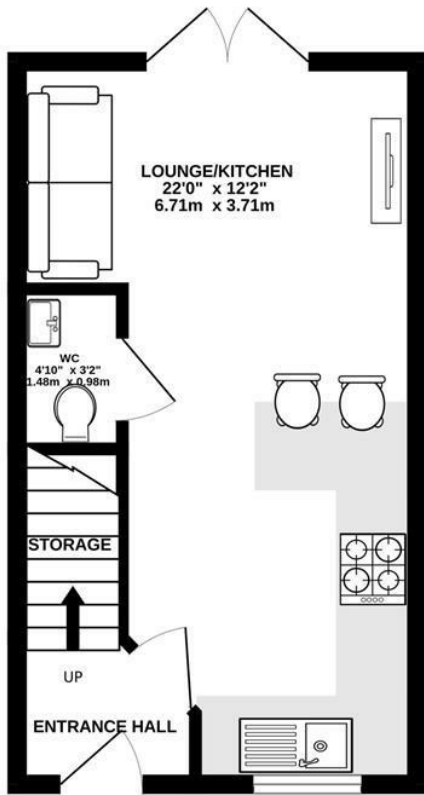




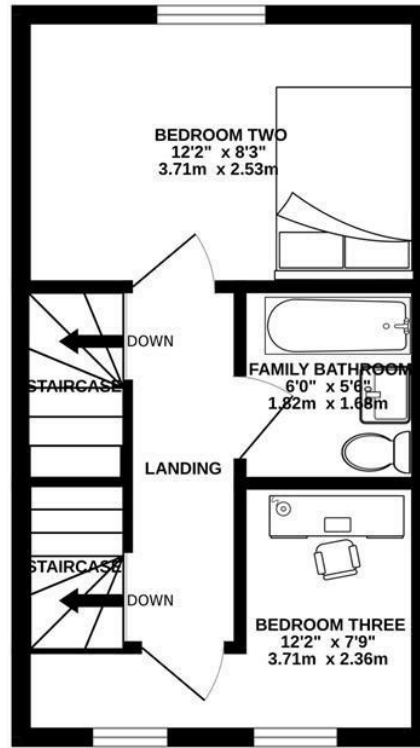




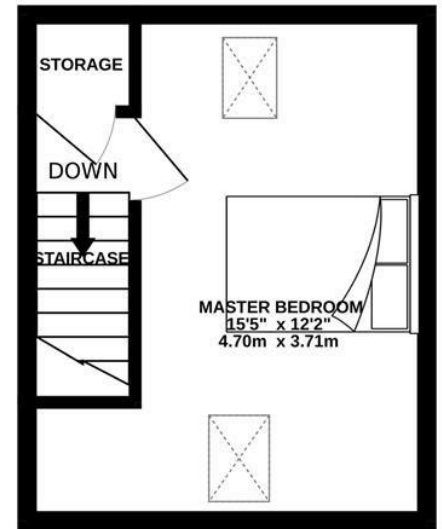
GROUND FLOOR
268 sq.ft. (24.9 sq.m.) approx.



1ST FLOOR
268 sq.ft. (24.9 sq.m.) approx.



2ND FLOOR
187 sq.ft. (17.4 sq.m.) approx.



TOTAL FLOOR AREA : 723 sq.ft. (67.1 sq.m.) approx.

Whilst every attempt has been made to ensure the accuracy of the floorplan contained here, measurements of doors, windows, rooms and any other items are approximate and no responsibility is taken for any error, omission or mis-statement. This plan is for illustrative purposes only and should be used as such by any prospective purchaser. The services, systems and appliances shown have not been tested and no guarantee as to their operability or efficiency can be given.
Made with Metropix ©2024



We do our best to ensure that our sales particulars are accurate and are not misleading but this is for general guidance and complete accuracy cannot be guaranteed. We are not qualified to verify tenure of a property and prospective purchasers should seek clarification from their solicitor. All measurements and land sizes are quoted approximately. The mention of any appliances, fixtures and fittings does not imply they are in working order.

Energy Efficiency Rating		Current	Potential
Very energy efficient - lower running costs			98
(92 plus) A		85	
(81-91) B			
(69-80) C			
(55-68) D			
(39-54) E			
(21-38) F			
(1-20) G			
Not energy efficient - higher running costs			
England & Wales		EU Directive 2002/91/EC	

Environmental Impact (CO ₂) Rating		Current	Potential
Very environmentally friendly - lower CO ₂ emissions			
(92 plus) A			
(81-91) B			
(69-80) C			
(55-68) D			
(39-54) E			
(21-38) F			
(1-20) G			
Not environmentally friendly - higher CO ₂ emissions			
England & Wales		EU Directive 2002/91/EC	

