

£850,000

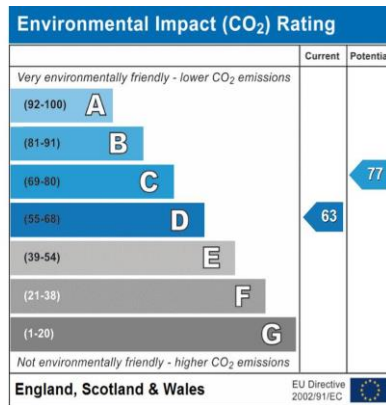
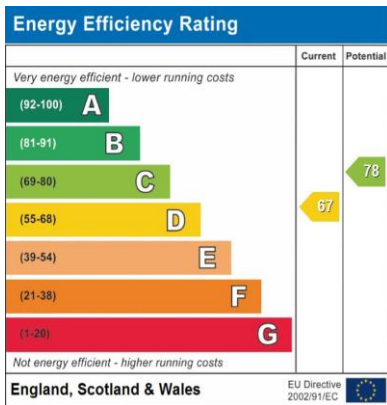
Camden Road, Camden, N7



- Own Entrance
- Rear Garden
- Two Bathroom
- Modern
- Bright
- Convenient Location
- Brand New
- Underfloor Heating

This architect designed 3 bed, 2 bathroom property is situated on the ground floor of a charming detached victorian villa set back on Camden Road which is a fabulous location being within walking and easy cycling distance of Camden, Holloway, Islington and Kings Cross.

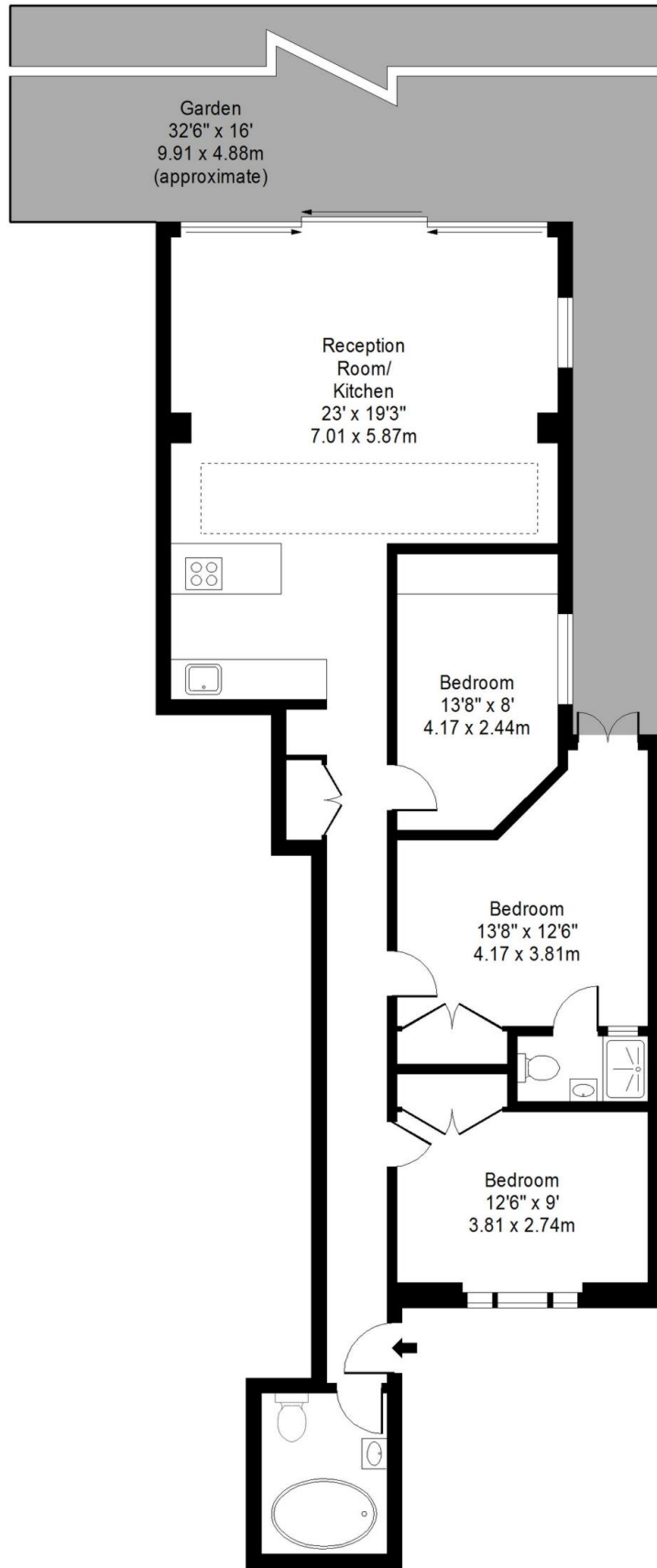
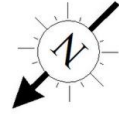
Camden Road, Camden, N7







CAMDEN ROAD



Ground Floor

Approx. Gross Internal Area 979 Sq Ft - 90.95 Sq M

For Illustrative Purposes Only - Not To Scale
www.lpaplus.com

Directions

Location



VIEWING BY APPOINTMENT WITH AGENTS ROCHESTER PLACE

161 Kentish Town Road, Camden, London, NW1 8PD T: 020 7284 4747 E: info@rochesterplace.co.uk W: www.rochesterplace.co.uk

General: While we endeavour to make our sales particulars fair, accurate and reliable, they are only a general guide to the property and, accordingly, if there is any point which is of particular importance to you, please contact the office and we will be pleased to check the position for you, especially if you are contemplating travelling some distance to view the property.

Measurements: These approximate room sizes are only intended as general guidance. You must verify the dimensions carefully before ordering carpets or any built-in furniture. Services: Please note we have not tested the services or any of the equipment or appliances in this property, accordingly we strongly advise prospective buyers to commission their own survey or service reports before finalizing their offer to purchase.

THESE PARTICULARS ARE ISSUED IN GOOD FAITH BUT DO NOT CONSTITUTE REPRESENTATIONS OF FACT OR FORM PART OF ANY OFFER OR CONTRACT. THE MATTERS REFERRED TO IN THESE PARTICULARS SHOULD BE INDEPENDENTLY VERIFIED BY PROSPECTIVE BUYERS OR TENANTS. NEITHER ROCHESTER PLACE NOR ANY OF ITS EMPLOYEES OR AGENTS HAS ANY AUTHORITY TO MAKE OR GIVE ANY REPRESENTATION OR WARRANTY WHATSOEVER IN RELATION TO THIS PROPERTY. YOUR HOME IS AT RISK IF YOU DO NOT KEEP UP REPAYMENTS ON A MORTGAGE OR OTHER LOAN SECURED ON IT.

Written quotations available on request. All loans secured on property. Life assurance is usually required.