

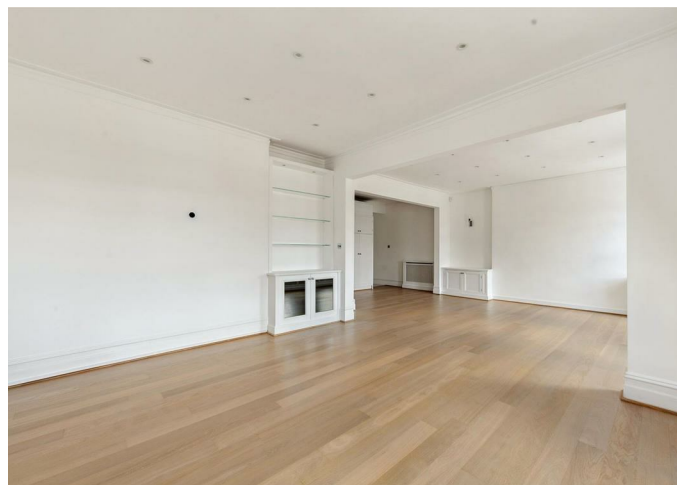


HOLLAND PARK GARDENS, LONDON,

£1,961 Per Week (£8,498
PCM)

FEATURES

- Three bedroom apartment
- Double reception room
- Abundance of natural light
- Fantastic views over Holland Park Tennis club
- Top floor with lift
- Newly renovated



Maskells

Carlton Mansions, W14

Approximate Gross Internal Area = 1610 sq ft / 149.6 sq m



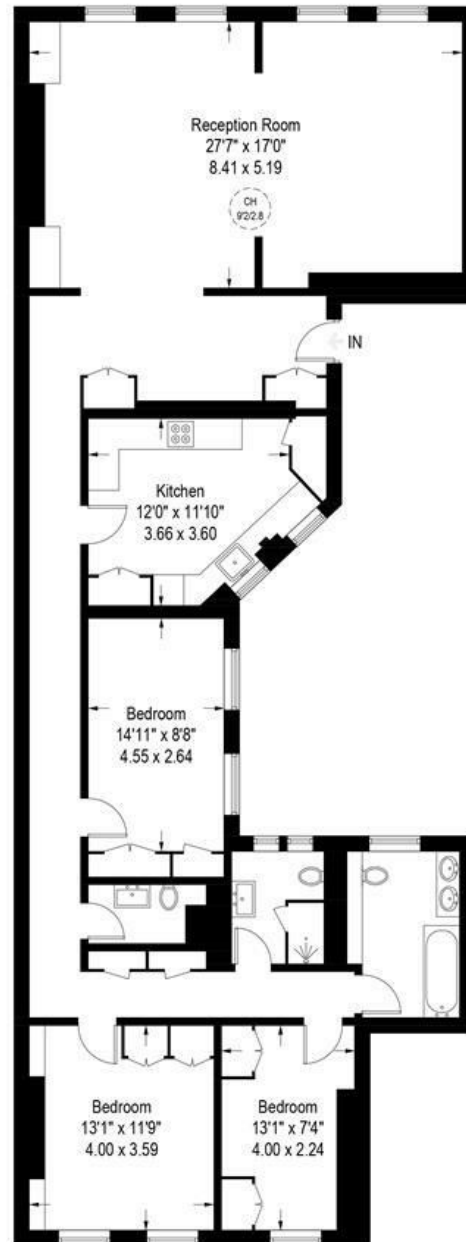
Call us on
0207 581 2216

Lettings@maskells.com
www.maskells.com

Council Tax Band: G
EPC: D

NO AGENCY FEES FOR TENANTS A newly renovated, spacious and well laid out top floor apartment with lift, benefitting from wonderful views over Holland Park Lawn Tennis Club. The property comprises a fantastic double reception room with an abundance of light, a good size separate kitchen with built in appliances, a master bedroom with floor to ceiling storage, two further bedrooms with in build storage, a newly installed shower room and new family bathroom.. There is also a WC and ample storage. EPC D.

Energy Efficiency Rating		Current	Potential
Very energy efficient - lower running costs			
(92 plus) A			
(81-91) B			
(69-80) C			
(55-68) D		60	62
(39-54) E			
(21-38) F			
(1-20) G			
Not energy efficient - higher running costs			
EU Directive 2002/91/EC			
England & Wales			



Fourth Floor

Illustration for identification purposes only,
measurements are approximate, not to scale. (ID989238)

Agents Note: Whilst every care has been taken to prepare these particulars, they are for guidance purposes only. All measurements are approximate and are for general guidance purposes only and whilst every care has been taken to ensure their accuracy, they should not be relied upon and potential buyers are advised to recheck the measurements.

