



# WALTON STREET, CHELSEA SW3

£ 575 Per Week ( £ 2,491 PCM)

## FEATURES

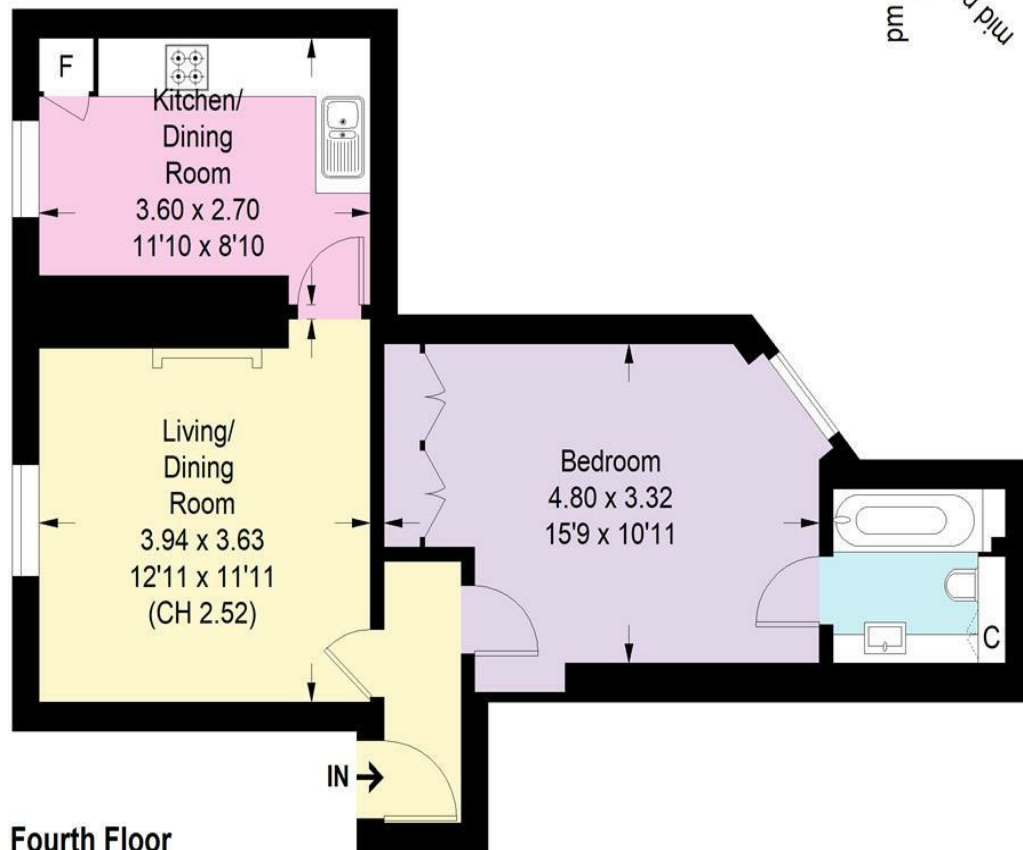
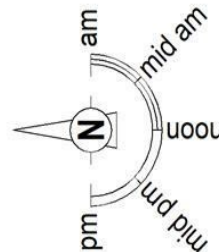
- Large 1 bedroom apartment
- Situated within a desirable secure portered mansion block
- Eat-in kitchen
- Wood flooring
- Excellent storage in the double bedroom
- 0.3 miles to South Kensington underground station (District, Circle and Piccadilly lines)
- 0.4 miles to Sloane Square



**Maskells**

# Marlborough, Walton Street, SW3

Approximate Floor Area = 46.54 sq m / 501 sq ft



Not to scale, for guidance only and must not be relied upon as a statement of fact.  
All measurements and areas are approximate only

Energy Efficiency Rating		
	Current	Potential
Very energy efficient - lower running costs		
(102 plus) <b>A</b>		
(81-101) <b>B</b>		
(69-80) <b>C</b>		
(55-68) <b>D</b>		
(39-54) <b>E</b>		
(21-38) <b>F</b>		
(1-20) <b>G</b>		
Not energy efficient - higher running costs		
	55	69
England & Wales	EU Directive 2002/91/EC	

Call us on  
**0207 581 2216**

**lettings@maskells.com**  
**www.maskells.com**

**Council Tax Band: F**  
**EPC : D**

A large, bright and newly decorated 1 bedroom apartment situated on the top floor of this secure, gated and portered mansion block. The property is particularly well located close to the shopping and transport amenities of South Kensington, Knightsbridge and Sloane Square. EPC D.

The flat is presented in good condition throughout, decorated in a neutral and contemporary style, with a large eat-in kitchen, separate reception room, excellent storage in the double bedroom and en-suite bathroom with shower over bath.

The flat, which is set over the top floor of the building, comprises: hallway, reception room, eat in kitchen, bathroom and bedroom.

Walton Street is 0.3 miles to South Kensington underground station (District, Circle and Piccadilly lines) and 0.7 miles to Knightsbridge underground station (Piccadilly line).

All potential tenants should be advised that administration fees may be applicable when renting a property. Please contact us for more details of these charges.

Agents Note: Whilst every care has been taken to prepare these particulars, they are for guidance purposes only. All measurements are approximate and are for general guidance purposes only and whilst every care has been taken to ensure their accuracy, they should not be relied upon and potential buyers are advised to recheck the measurements.

**Maskells**