



Hornton Street
Kensington W8

Maskells



An impressive and beautifully presented Grade II listed five bedroom family home, occupying approx. 3206sq ft, offering generous living and entertaining space.



Accommodation and Amenities

- FIVE BEDROOMS
- THREE RECEPTION ROOMS
- FAMILY HOME
- WONDERFUL PROPORTIONS
- CLOSE TO HOLLAND PARK AND KENSINGTON PALACE GARDENS
- COMMUNAL GARDENS

The house benefits from excellent width and proportions on all floors as well as lovely natural light via an east and westerly orientation.

This fantastic family home is stylishly presented having recently undergone a detailed refurbishment and benefits from a patio and direct access to the well-maintained communal gardens. The property has a double reception on the ground floor, with a fantastic family room and semi-open plan kitchen on the lower ground floor. There is a wonderful first floor master bedroom suite and then four further double bedrooms with two family bathrooms. The property has a plethora of traditional features and wonderfully high ceilings, giving a sense of grandeur.

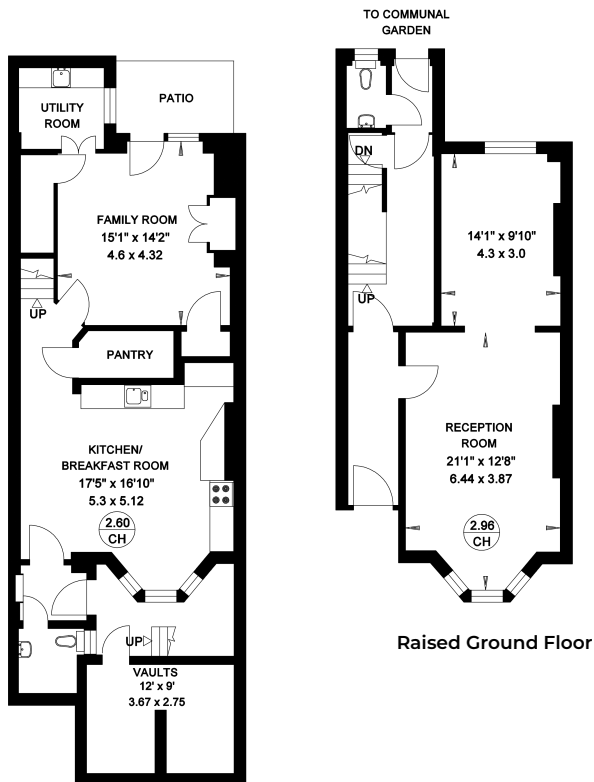


APPROXIMATE FLOOR AREA

297.8 sq m / 3,206 sq ft excluding Vaults

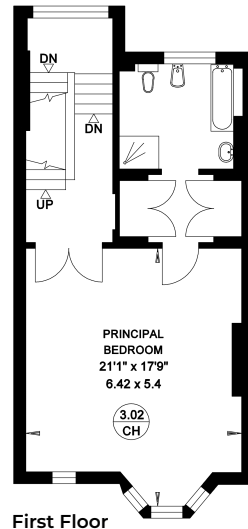
Vaults 10.22 sq m / 110 sq ft

Gross Total Area 308 sq m / 3,316 sq ft

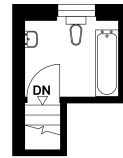


Lower Ground Floor

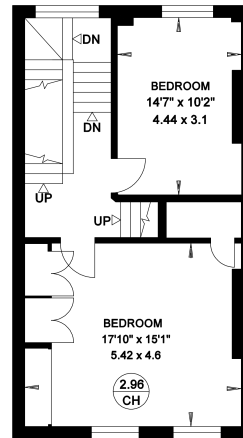
Raised Ground Floor



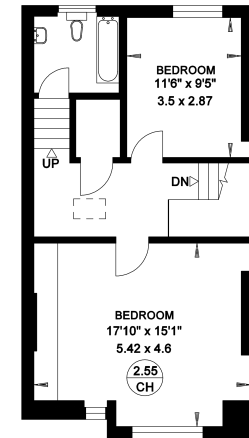
First Floor



Upper Second Floor



Second Floor



Third Floor



TERMS

Asking Price £4,750,000

Tenure Freehold

EPC D

Council Tax Band H

Local Authority The Royal Borough of Kensington and Chelsea

Let's talk Mortgages

Maskells has partnered with CBM Financial, an independent mortgage broker, directly authorised with specialist knowledge and whole of market access.

CLICK HERE

mortgages@maskells.com

Your home may be repossessed if you do not keep up repayments on your mortgage



@maskellsea

Maskells

105 Kensington Church Street,
London W8 7LN
Tel: 0207 887 2532
sales@maskells.com
lettings@maskells.com

[maskells.com](https://www.maskells.com)