



DRAYTON GARDENS, LONDON, SW10

£1,600,000

FEATURES

- Long Lease
- Excellent Condition
- High Ceilings
- Lateral Arrangement



Maskells

A superb 1st floor (with lift) lateral flat, with generous room sizes, high ceilings and a secure position, presented in excellent condition.

Call us on
0207 581 2216

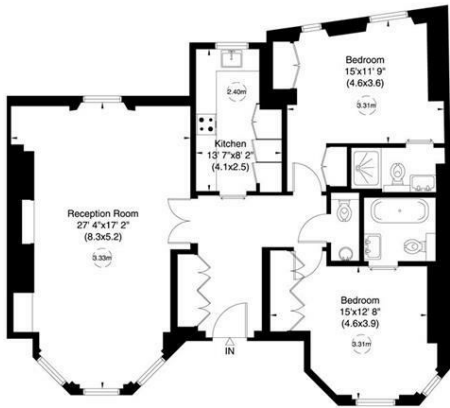
sales@maskells.com
www.maskells.com

Council Tax Band
G

Drayton Gardens, SW10

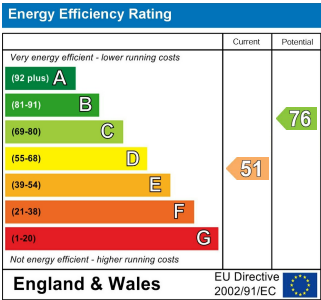
Gross internal area (approx.)
107 Sq m (1149 Sq ft)
For identification only, Not to Scale

Floor Plan by **capital group** 020 8671 7722



First Floor

Not to scale, for guidance only and must not be relied upon as a statement of fact. All measurements and areas are approximate only (and have been prepared in accordance with the current edition of the RICS Code of Measuring Practice).



Agents Note: Whilst every care has been taken to prepare these particulars, they are for guidance purposes only. All measurements are approximate and are for general guidance purposes only and whilst every care has been taken to ensure their accuracy, they should not be relied upon and potential buyers are advised to recheck the measurements.

