



THURLOE SQUARE, SOUTH KENSINGTON SW7

£1,038Per Week (£4,498 PCM)

FEATURES

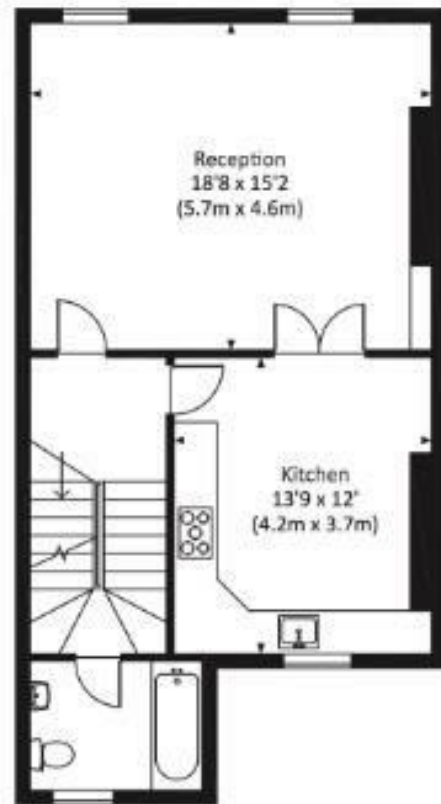
- Wonderful duplex apartment
- Views over the V&A Museum
- 0.8 miles to Kings Road
- Two double bedrooms
- Unfurnished (Furnished by separate negotiation)
- Access to the communal gardens



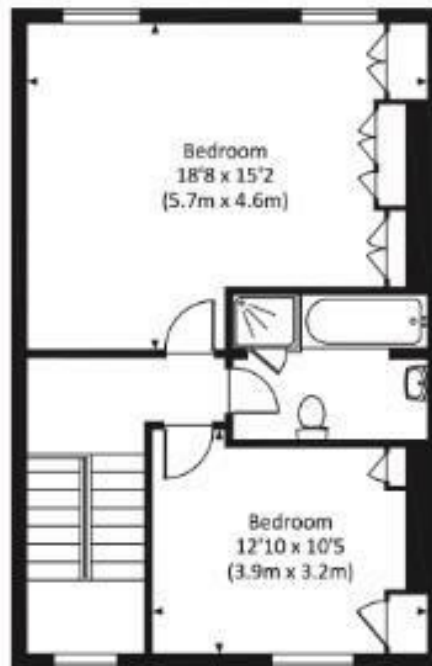
 2
  1
  2
  c

Maskells

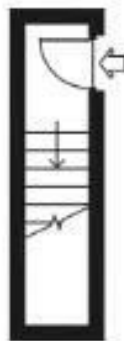
Approx. gross internal area
1169 Sq Ft. / 108.6 Sq M.



SECOND FLOOR



THIRD FLOOR



FIRST FLOOR

Call us on

0207 887 2532

lettingskcs@maskells.com

www.maskells.com

Council Tax Band: G

A wonderful 2 bedroom, 2 bathroom duplex apartment possessing a spectacular reception room, with unrivalled views of the V&A museum, leading through to a large semi-open plan built in kitchen with the capacity to dine in.

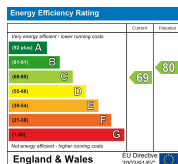
The flat overlooks communal gardens and is located on this popular garden square, close to the shopping and transport amenities of South Kensington, as well as being only 0.7 miles from King's Road.

Situated on the upper floors of this impressive stucco fronted terrace, this wonderful apartment is full of character and period features. The accommodation comprises; entrance hall, reception room, fully fitted kitchen, master bedroom, family bathroom with separate bath and shower suite, 2nd double bedroom and a further bathroom.

The property is 290 yds from South Kensington underground station (District, Circle and Piccadilly lines) and only 0.7 miles from Hyde Park. EPC C.

All potential tenants should be advised that administration fees may be applicable when renting a property. Please contact us for more details of these charges.

Maskells are members of Propertymark the leading membership body for property agents. We are part of the Propertymark Client Money Protection scheme and a member of The Property Ombudsman Scheme (approved by the Office of Fair Trading) and subscribe to its Codes of Practice for Letting Agents.



Agents Note: Whilst every care has been taken to prepare these particulars, they are for guidance purposes only. All measurements are approximate and are for general guidance purposes only and whilst every care has been taken to ensure their accuracy, they should not be relied upon and potential buyers are advised to recheck the measurements.

Maskells