

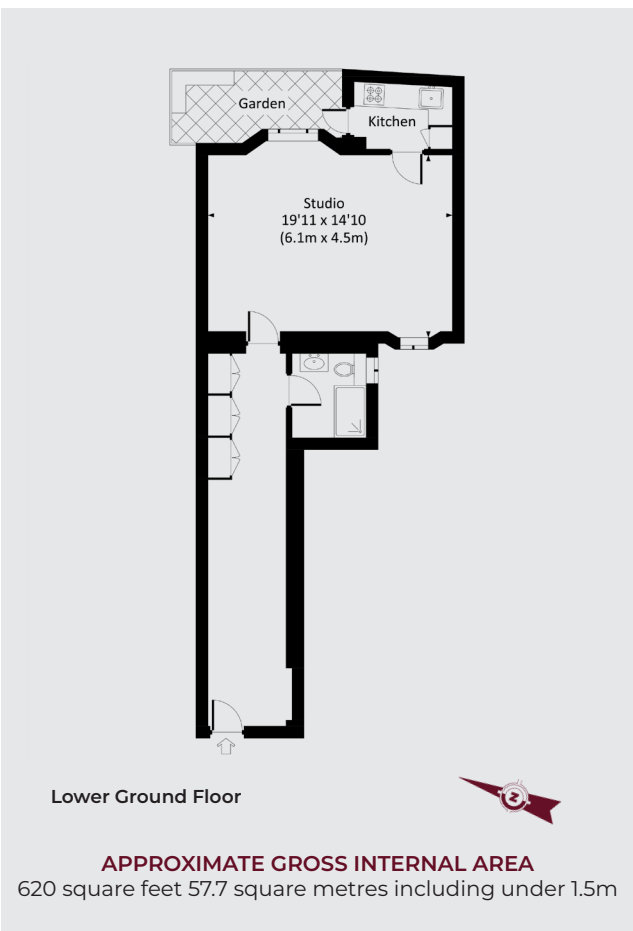


Courtfield Gardens  
South Kensington SW5

**M**askells

---





A very large studio flat with a mple s storage s pace and exceptional privacy, located just 0.3 miles from Gloucester Road underground station.

Nestled on a peaceful communal garden square, this apartment comes with a key to access Courtfield Gardens. The flat is over 620 sq ft (57.7 sq meters) and features spacious, well-proportioned living areas with plenty of cupboard and storage space not found in other studio flats. It is exceptionally quiet with minimal noise from neighbors, making it the perfect sanctuary amidst the vibrant city surroundings. The flat's secluded position ensures maximum privacy and tranquility, away from the hustle and bustle of city life.

Perfect for discerning buyers seeking tranquility and privacy in a prime residential address who also need ample storage space.

### TERMS

**Asking Price** £395,000

**Tenure** Leasehold with a share of freehold

**Service Charge** £5,856.14 for the period 1<sup>st</sup> October 2023 to 30<sup>th</sup> September 2024

**Ground Rent** Peppercorn

**EPC** C

**Council Tax Band** G

**Local Authority** The Royal Borough of Kensington and Chelsea



# Maskells

71 Walton Street, London SW3 2HT

Tel: 0207 581 2216

[sales@maskells.com](mailto:sales@maskells.com)

[lettings@maskells.com](mailto:lettings@maskells.com)

[maskells.com](https://www.maskells.com)



@maskellsea

*Let's talk Mortgages*

**CLICK HERE**

Maskells has partnered with CBM Financial, an independent mortgage broker, directly authorised with specialist knowledge and whole of market access.

[mortgages@maskells.com](mailto:mortgages@maskells.com)

Your home may be repossessed if you do not keep up repayments on your mortgage

