



Connaught Square  
Westminster W2

**M**askells

This elegant three-bedroom, two-bathroom apartment is ideally situated in a charming period building on one of London's premier garden squares, just moments from Hyde Park, Marylebone and Mayfair.



### Accommodation and Amenities

- PRIVATE GARDEN SQUARE
- LIFT
- SPACIOUS
- BRIGHT
- SECONDS FROM HYDE PARK

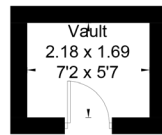


The property offers the convenience of direct access via a private passenger lift, leading straight into the apartment. Inside, you'll find a spacious and attractive reception room, three well-proportioned bedrooms, including a master bedroom with en-suite, and a separate family bathroom.

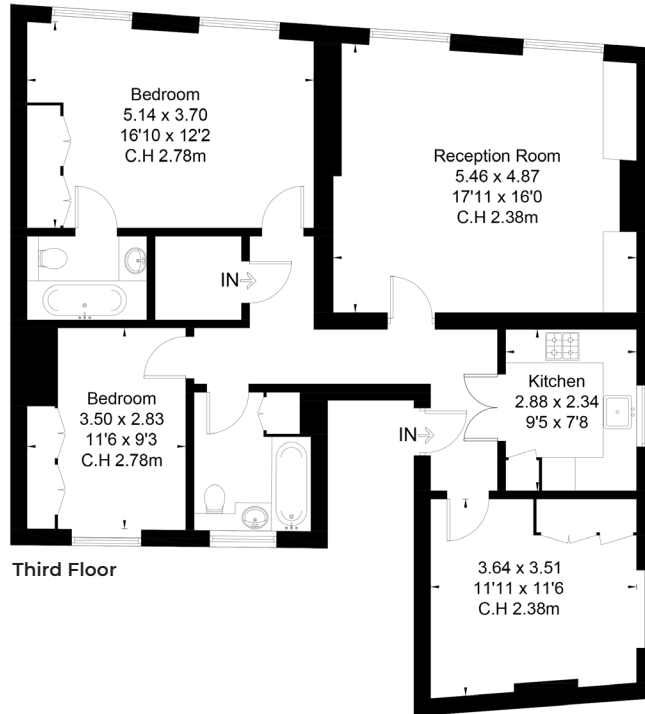
The apartment further benefits from access to the private garden square and is ideally located in the heart of Connaught Village with easy access to Paddington Station, the Heathrow Express, the Central Line at Marble Arch and Oxford Street.







Lower Ground Floor



Third Floor

## APPROXIMATE FLOOR AREA

102.7 sq m / 1,105 sq ft

## TERMS

**Asking Price** £1,695,000

**Tenure** Leasehold with a share of freehold

**Service Charge** Approx £8,500pa

**Ground Rent** Peppercorn

**EPC** C

**Council Tax Band** G

**Local Authority** City of Westminster

*Let's talk Mortgages*

Maskells has partnered with Private Finance, an independent mortgage broker, directly authorised with specialist knowledge and whole of market access.

**CLICK HERE**

[Privatefinance@maskells.com](mailto:Privatefinance@maskells.com)

Your home may be repossessed if you do not keep up repayments on your mortgage



@maskellsea

# Maskells

Marylebone and West End

Tel: 0207 590 1300

[sales@maskells.com](mailto:sales@maskells.com)

[lettings@maskells.com](mailto:lettings@maskells.com)

[maskells.com](http://maskells.com)