



Queens Gardens  
Bayswater W2

**M**askells



Located on the raised ground floor of this stucco fronted building is this impressive 1 bedroom flat that has been renovated to an high standard throughout.



## Accommodation and Amenities

- STUCCO FRONTED BUILDING
- HIGH CEILINGS
- ACCESS TO THE COMMUNAL GARDEN SQUARE
- SHARE OF FREEHOLD





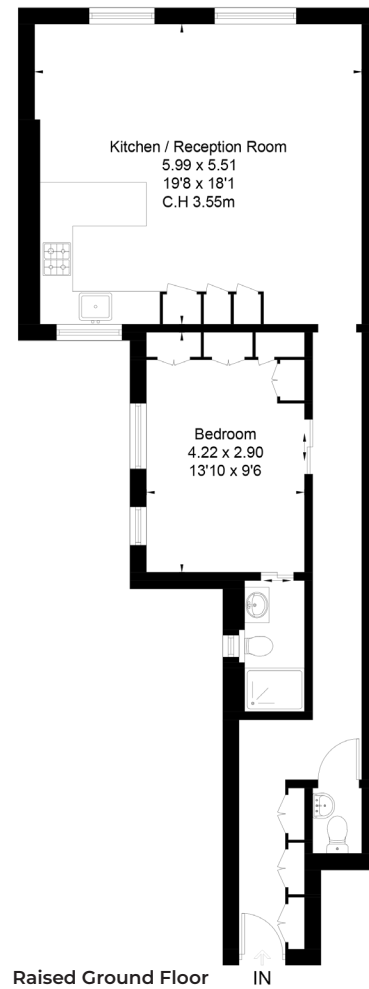
There is plenty of storage throughout the flat which also benefits from a guest loo. The bedroom is of a good size with built in cupboards and a stylish en-suite bathroom. As you walk into the open plan kitchen and living space which has fantastic ceiling height and period features that remain. The modern kitchen is fully fitted and has been well planned to incorporate a breakfast bar as well as plenty of space for a dining area.

Queens Gardens is well located for Hyde Park and the restaurants, shops and bars of London's West End, Queensway and Notting Hill. Lancaster Gate, Bayswater and Queensway are the nearest underground stations with Paddington station a short walk away for the Elizabeth Line.



## APPROXIMATE FLOOR AREA

64.7 sq m / 696 sq ft



## TERMS

**Asking Price** £675,000

**Tenure** Leasehold with a Share of Freehold

**Service Charge** £2,040 per annum

**Ground Rent** Peppercorn

**EPC** C

**Council Tax Band** D

**Local Authority** The City of Westminster

*Let's talk Mortgages*

Maskells has partnered with Private Finance, an independent mortgage broker, directly authorised with specialist knowledge and whole of market access.

**CLICK HERE**

[Privatefinance@maskells.com](mailto:Privatefinance@maskells.com)

Your home may be repossessed if you do not keep up repayments on your mortgage



@maskellsea

# Maskells

105 Kensington Church Street,  
London W8 7LN  
Tel: 0207 887 2532  
[sales@maskells.com](mailto:sales@maskells.com)  
[lettings@maskells.com](mailto:lettings@maskells.com)

[maskells.com](http://maskells.com)

