



ADDISON PARK MANSIONS, BROOK GREEN W14

£780 Per Week (£3,380 PCM)

FEATURES

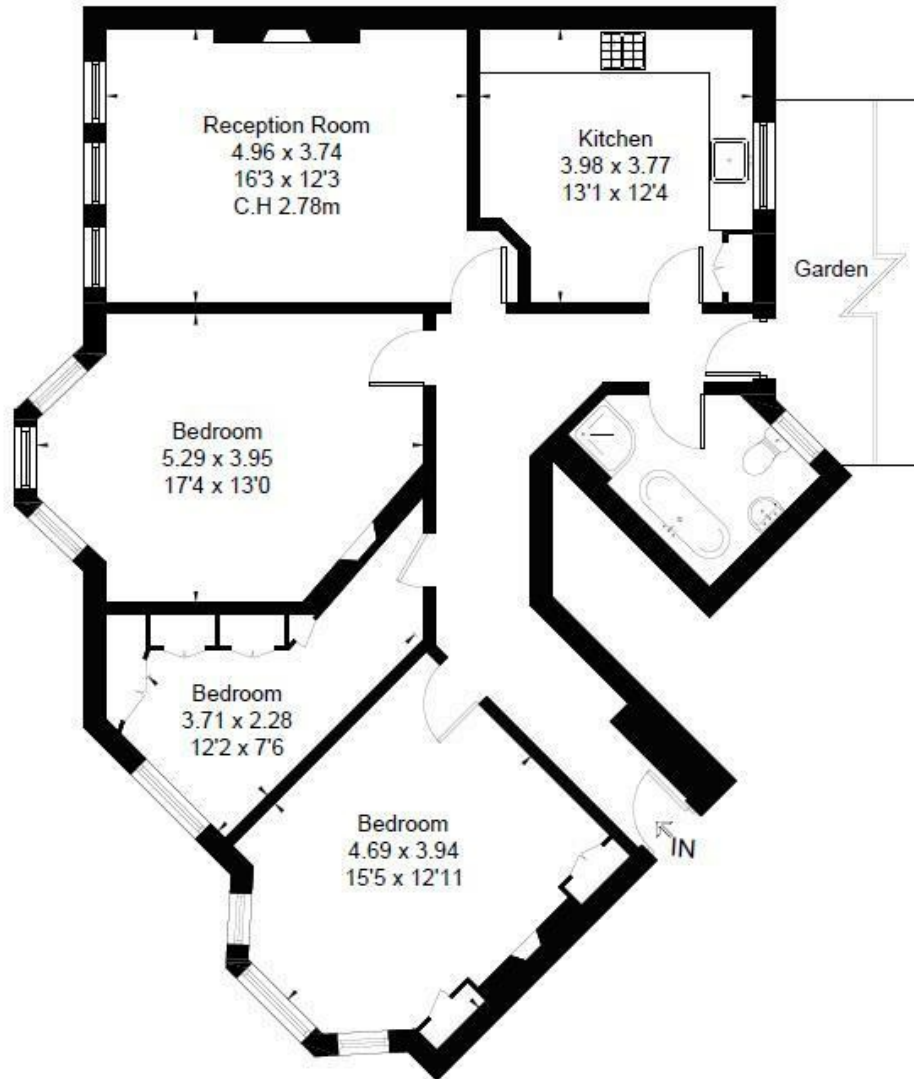
- Two bedroom garden apartment
- Handsome red brick mansions
- Envious position close to transport links
- Lateral Living
- Brook Green mansions
- Unfurnished



Maskells

ADDISON PARK MANSIONS, W14

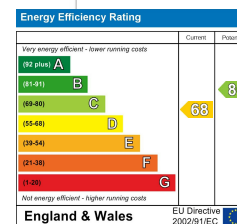
Approximate Floor Area = 100.5 sq m / 1082 sq ft



Lower Ground Floor



This floor plan has been drawn in accordance with RICS Property Measurement 2nd edition. All measurements, including the floor area, are approximate and for illustrative purposes only @djd.london #78505



Call us on

0207 887 2532

lettingskcs@maskells.com

www.maskells.com

Council Tax Band: D

A wonderful lateral two bedroom garden flat located within a handsome red brick period mansion block. This wonderfully elegant apartment has a plethora of original features and is beautifully presented. The property offers excellent living and entertaining space and benefits from a private garden to the rear. There is a large reception room with an ornate original fire place and triple sash windows. Next to this is the country style kitchen/dining room with lovely views over the private garden. There is a large master bedroom with a bay window and original fireplace. Adjacent to this is a fantastic walk in wardrobe with the ability to also be a study or single bedroom. There is a further double bedroom with great in-built storage, a bay window and fire place. There is a good size family bathroom with a glorious free standing bath and separate shower cubicle.

Agents Note: Whilst every care has been taken to prepare these particulars, they are for guidance purposes only. All measurements are approximate and are for general guidance purposes only and whilst every care has been taken to ensure their accuracy, they should not be relied upon and potential buyers are advised to recheck the measurements.

