



ENNISMORE GARDENS, WESTMINSTER SW7

FEATURES

- Best in class 1 bedroom 1st floor flat
- Terrace overlooking Ennismore Gardens
- Presented in beautiful condition with hardwood flooring
- 4+ meter ceiling heights and floor to ceiling windows
- SieMatic kitchen
- Close proximity to Hyde Park and Harrods



Maskells

ENNISMORE GARDENS , SW7

Approx. gross internal area
799 Sq Ft. / 74.2 Sq M.



Call us on

0207 581 2216

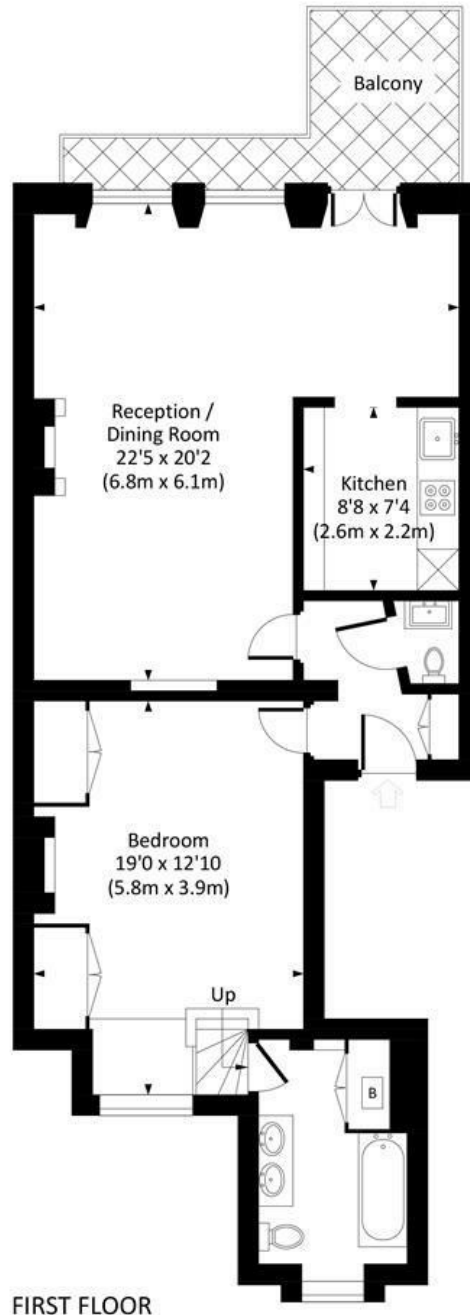
lettings@maskells.com

www.maskells.com

An outstanding, best in class, 1 bedroom apartment situated on the first floor of this marquee Knightsbridge garden square, on the favourable Eastern side of the square with beautiful private terrace overlooking the communal gardens.

The apartment has been meticulously refurbished throughout, including hardwood flooring and stylish fully fitted SieMatic kitchen, and retains a wealth of period features befitting a flat of this stature, including ornate cornicing and over 4 metre ceiling heights.

Agents Note: Whilst every care has been taken to prepare these particulars, they are for guidance purposes only. All measurements are approximate and are for general guidance purposes only and whilst every care has been taken to ensure their accuracy, they should not be relied upon and potential buyers are advised to recheck the measurements.



FIRST FLOOR

Energy Efficiency Rating	
Current	Potential
Very energy efficient - lower running costs	
(92 plus) A	
(81-91) B	
(69-80) C	
(55-68) D	66
(39-54) E	50
(21-38) F	
(1-20) G	
Not energy efficient - higher running costs	
EU Directive 2002/91/EC	
England & Wales	



All measurements have been made in accordance with RICS code of Measuring Practice which are approximate only and only for illustrative purposes. For the avoidance of doubt, Dowling Jones Design shall not be liable for any reliance on these measurements. © 2023 www.dowlingjones.com 020 7610 9933