



SLOANE GARDENS, LONDON SW1W

£923 Per Week (£3,999.66 PCM)

FEATURES

- Interior designed two bedroom apartment
- Recently refurbished throughout to a high standard
- Double bedrooms with plentiful storage
- Access to pretty communal gardens
- Moments from King's Road
- Top floor (3rd) with lift
- Flooded with natural light
- On site caretaker
- Wonderful location 2 minutes walk to Sloane Square
- 0.8 miles to Victoria Station



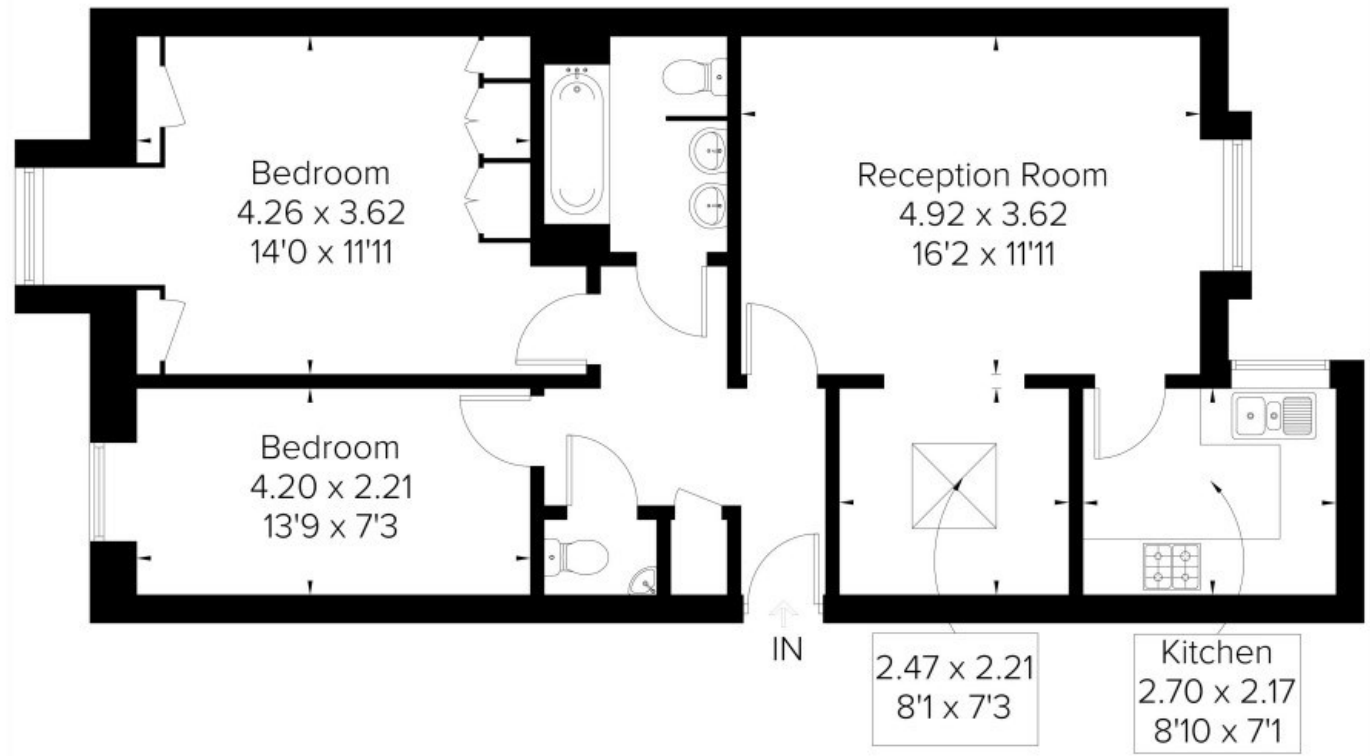
Maskells

Energy Efficiency Rating		Current	Potential
Very energy efficient - lower running costs			
(92 plus) A			
(81-91) B			
(69-80) C			
(55-68) D			
(39-54) E			
(21-38) F			
(1-20) G			
Not energy efficient - higher running costs			
England & Wales	EU Directive 2002/91/EC		

78

56

Approximate Area = 73.4 sq m / 790 sq ft



Call us on
0207 581 2216

lettings@maskells.com
www.maskells.com

Council Tax Band G

A most stylish and elegant interior designed two bedroom apartment, situated on the top floor (3rd floor with lift) of this grand building, with the benefit of a caretaker and direct access to the communal gardens, moments from Sloane Square and King's Road. EPC D.

The flat provides well laid out living space, with a large reception room and dining area/conservatory, as well as a fully fitted kitchen (with dishwasher and w/d) and a contemporary bathroom with double sinks and separate guest WC.

Sloane Gardens is a quiet residential street only 100 yards to Sloane Square underground station (District and Circle lines) and 0.8 miles to London Victoria underground station (Victoria, District and Circle lines) and overground services.

All potential tenants should be advised that administration fees may be applicable when renting a property. Please contact us for more details of these charges.

Agents Note: Whilst every care has been taken to prepare these particulars, they are for guidance purposes only. All measurements are approximate and are for general guidance purposes only and whilst every care has been taken to ensure their accuracy, they should not be relied upon and potential buyers are advised to recheck the measurements.

