



Upper Brook Street

MAYFAIR W1K



A BEAUTIFULLY PRESENTED
4 BEDROOM GEORGIAN
TOWNHOUSE SITUATED ON THIS
HIGHLY DESIRABLE STREET IN
THE VERY HEART OF MAYFAIR
WITHIN WALKING DISTANCE OF
SELFRIDGES, GREEN PARK AND
HYDE PARK.

This rare double aspect house has 3 separate reception areas as well as a wealth of period features, high ceilings and large windows.

This immaculate house presents the incoming tenant with a wonderful family home with flexible accommodation, particularly focused on entertainment, in excellent decorative order throughout, including wood floor and high quality fixtures and fittings.

The accommodation comprises; large entrance foyer, dining room, eat-in kitchen, wine cellar, utility room, principal first floor reception room, master bedroom suite with dressing room and bathroom, three further double bedrooms, two further bathrooms and guest cloakroom.

The property is located 0.3 miles from Bond Street underground (Elizabeth Line, Central Line, Jubilee Line), 0.7 miles from Green Park underground (Victoria, Piccadilly and Jubilee line) and 0.2 miles from Hyde Park.



- ❖ Immaculate 4 bedroom Georgian house
- ❖ Central Mayfair Location
- ❖ Over 3,000 sq.ft (280 sqm) of internal accommodation
- ❖ Excellent entertaining space
- ❖ Exceptional first floor drawing room
- ❖ Master suite with dressing room and bathroom
- ❖ Situated just off NW corner of Grosvenor Square
- ❖ Adjacent to The Chancery Rosewood, set to open in 2025

All potential tenants should be advised that administration fees may be applicable when renting a property. Please contact us for more details of these charges.





Approx. Gross Internal Area
 265 Sq m (2,852 Sq ft) excluding cellar
 Cellar 15 Sq m (161 Sq ft)
 Total 280 Sq m (3,013 Sq ft)

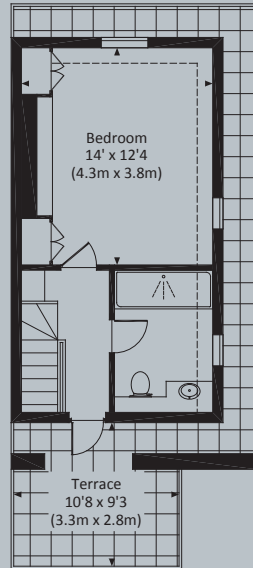
Asking Price: £3,450 Per Week (£14,950 PCM)

Unfurnished

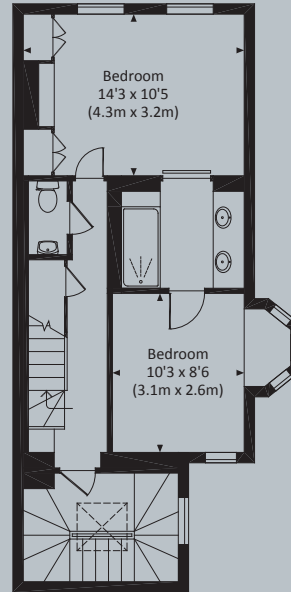
EPC: E

Local Authority: Westminster City

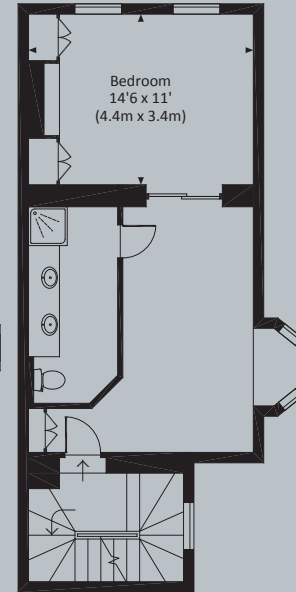
Council Tax Band: H



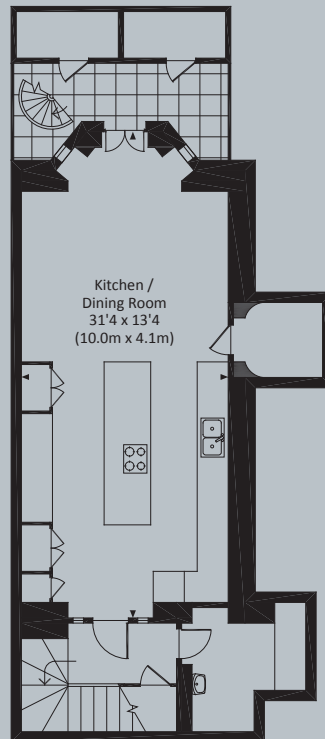
Fourth Floor



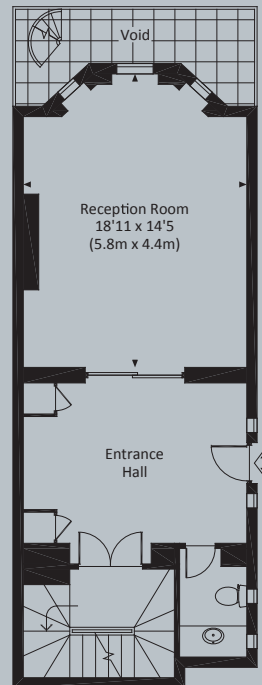
Third Floor



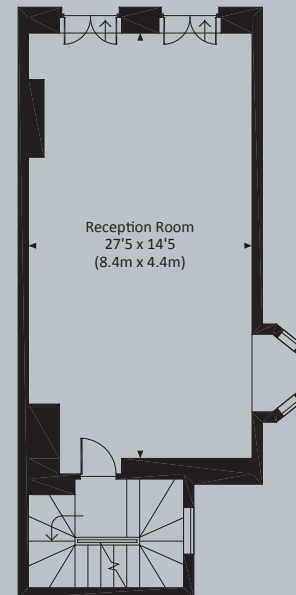
Second Floor



Lower Ground Floor



Ground Floor



First Floor



Maskells

71 Walton Street

SW3 2HT

0207 581 2216

lettings@maskells.com