



PALACE GATE, KENSINGTON W8

£2,895 Per Week (£12,545 PCM)

FEATURES

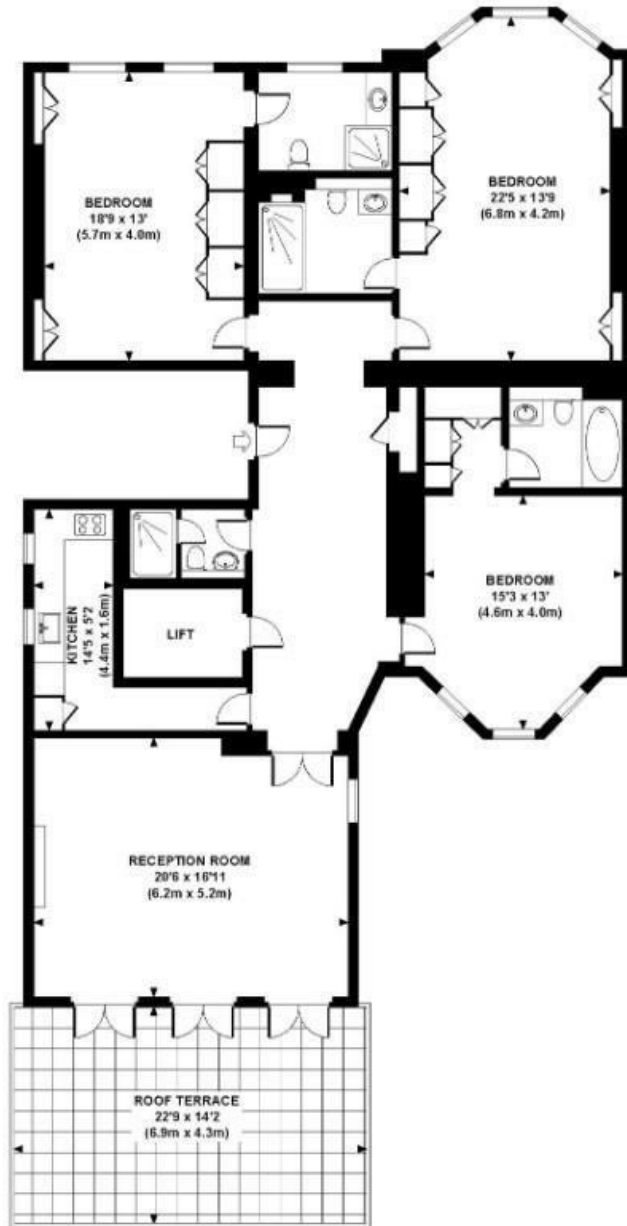
- Three bed lateral apartment
- Air conditioning
- Day concierge
- Unfurnished
- Large terrace with wonderful views
- Recently renovated



Maskells

Energy Efficiency Rating		Current	Potential
Very energy efficient - lower running costs	A	77	81
81-91	B		
69-80	C		
55-68	D		
39-54	E		
21-38	F		
1-20	G		
No energy efficient - higher running costs			
England & Wales		EU Directive 2002/91/EC	

Approx. gross internal area
1796 Sq.Ft. / 166.9 Sq.M. Exclude Lift



SECOND FLOOR

Call us on

0207 887 2532

lettingskcs@maskells.com

www.maskells.com

Council Tax Band: H

A beautiful and unique three bedroom apartment designed for family living, located in one of Kensington's grand red brick buildings with concierge and just a stones throw from Kensington Gardens. This apartment was recently refurbished to exacting standards and is a small development with only five other properties.

The apartment offers a large formal reception room with high ceilings and direct access to the large terrace which has fantastic views over the gardens of near by properties. The modern fitted kitchen is adjacent to the reception for ease of living.

The master suite has an en-suite bathroom and benefits from ample storage. It also looks out over the beautiful neighbourhood and has fantastic natural light. There are two further en-suite bedrooms which both have inbuilt wardrobes. The property also benefits from a wonderful entrance hall and direct lift access into the apartment and an concierge. Available from 16th September on an unfurnished basis.

All potential tenants should be advised that administration fees may be applicable when renting a property. Please contact us for more details of these charges.

Agents Note: Whilst every care has been taken to prepare these particulars, they are for guidance purposes only. All measurements are approximate and are for general guidance purposes only and whilst every care has been taken to ensure their accuracy, they should not be relied upon and potential buyers are advised to recheck the measurements.

Maskells