



# KENSINGTON COURT, KENSINGTON W8

£2,995 Per Week (£12,978.33 PCM)

## FEATURES

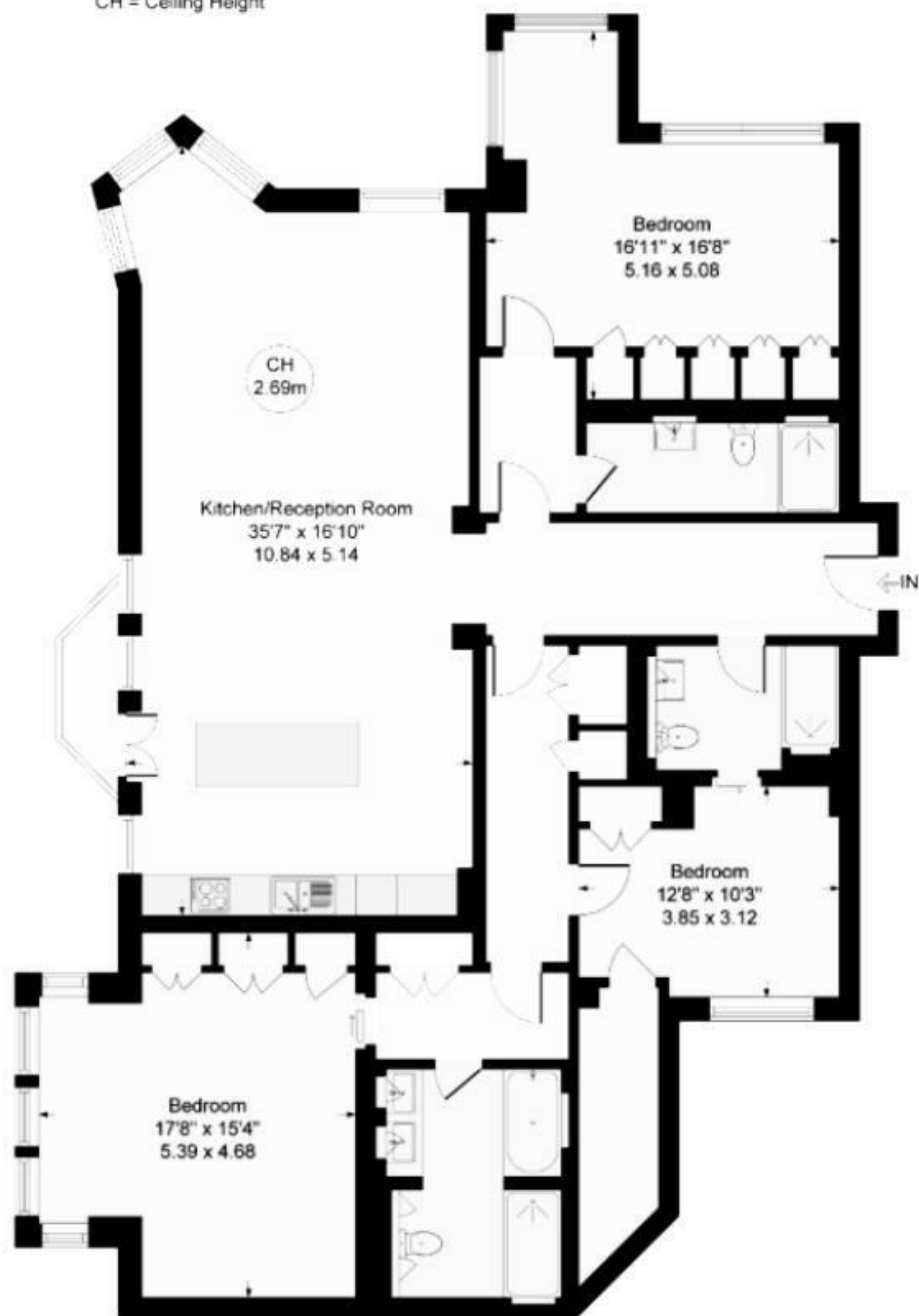
- Lateral three bed apartment
- Close to Kensington Palace Gardens
- Furnished
- Concierge
- High specification finishes
- Unfurnished by separate negotiation



**Maskells**

Kensington Court, W8  
Approximate Gross Internal Area = 1809 sq ft / 168.04 sq m

CH = Ceiling Height



Energy Efficiency Rating		Current	Potential
100-91(A)	A	79	84
91-81(B)	B		
81-71(C)	C		
71-61(D)	D		
61-51(E)	E		
51-31(F)	F		
1-21(G)	G		
Not energy efficient - higher running costs			
England & Wales		EU Directive 2002/91/EC	

Call us on

0207 887 2532

[lettingskcs@maskells.com](mailto:lettingskcs@maskells.com)

[www.maskells.com](http://www.maskells.com)

Council Tax Band: H

An exceptional lateral 3 bedroom apartment positioned over the first floor of this truly impressive red brick building with south facing views over Kensington Court. Featuring stunning parquet flooring, high ceilings and a wealth of natural light, this apartment comprises of a stylish open plan kitchen fitted with Miele appliances and a glorious reception featuring views of the surrounding area. In addition is a spacious master bedroom with plenty of storage, an opulent en-suite bathroom with separate bath and shower and his and hers sinks. There are two further double bedroom suites and a large storage cupboard. Energy Rating C.

The property boasts extensive storage throughout and there is use of a well maintained communal garden for residents of the building. The property also benefits from a day concierge within the building. Situated on this beautiful square in a prime Kensington location adjacent from Kensington Palace and High Street Kensington. The property can be unfurnished by separate negotiation.

Material Information Parts B&C guidance as follows: Gas - Mains gas central heating. Water and Sewerage - mains water and sewerage. Internet- according to Ofcom, broadband services are available, including fibre. Mobile coverage - according to FTTP Pro, there is 3/4/5G mobile coverage at this address. Parking- enquire with local council Kensington and Chelsea, additional costs may be applicable.

Fees may be applicable to potential tenants, please ask us for more details.

Agents Note: Whilst every care has been taken to prepare these particulars, they are for guidance purposes only. All measurements are approximate and are for general guidance purposes only and whilst every care has been taken to ensure their accuracy, they should not be relied upon and potential buyers are advised to recheck the measurements.

**Maskells**