



Portland Road  
Holland Park W11

 Maskells

A bright and airy, three bedroom, maisonette with its own entrance and an incredibly rare double aspect overlooking both Portland and Princedale Road.



### Accommodation and Amenities

- HIGH CEILINGS
- OWN ENTRANCE
- DUAL ASPECT
- CLOSE TO HOLLAND PARK

---

This apartment has huge potential and is accessed via its own front door and entrance hallway on the ground floor.

The first floor has a high-ceilinged drawing room with original fireplace and large floor to ceiling sash windows with unobstructed views to the west and Princedale Road. There is also a spacious eat in kitchen on this floor with views over Portland Road.

The second floor has a master bedroom with en suite shower room and two further bedrooms and throughout the flat is flooded with natural light.

Portland Road is served by a number of excellent local shops such as the family run Lidgate Butchers, Jeroboam Cheese & Wine, The Supermarket of Dreams and a number of cafes and restaurants.

The entrance to Holland Park itself with its famous Japanese Kyoto Garden and summer Opera is a short walk away, as are the Underground Stations at both Holland Park and Notting Hill Gate (Central, District & Circle Lines) whilst the famous Portobello Road is also close by.

Please note that the principal rooms in this brochure have been furnished using CGI.



## APPROXIMATE FLOOR AREA

109.4 sq m / 1,177 sq ft

## TERMS

**Asking Price** £1,950,000

**Tenure** Leasehold With Share of Freehold

**Service Charge** TBC

**EPC** C

**Council Tax Band** F

**Local Authority** The Royal Borough of Kensington and Chelsea

*Let's talk Mortgages*

Maskells has partnered with Private Finance, an independent mortgage broker, directly authorised with specialist knowledge and whole of market access.

**CLICK HERE**

[privatefinance@maskells.com](mailto:privatefinance@maskells.com)

Your home may be repossessed if you do not keep up repayments on your mortgage

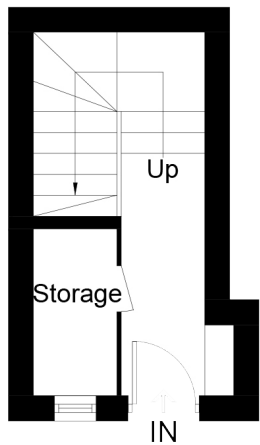


@maskellsea

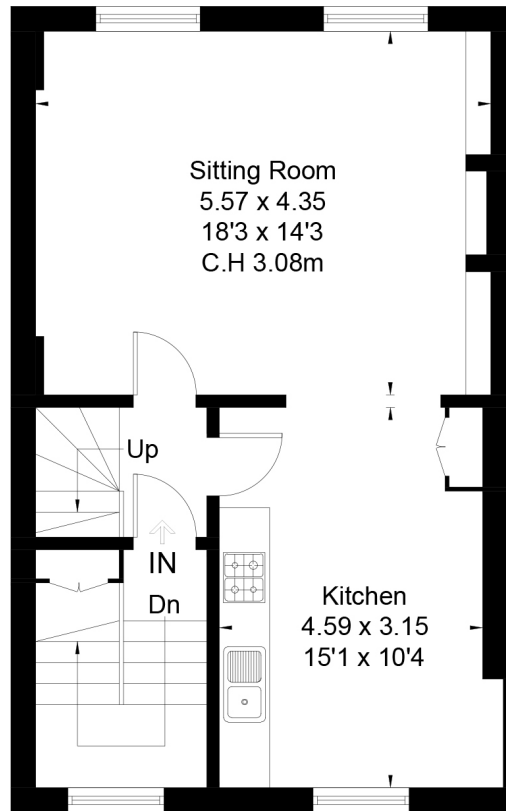
# Maskells

105 Kensington Church Street,  
London W8 7LN  
Tel: 0207 581 2216  
[sales@maskells.com](mailto:sales@maskells.com)  
[lettings@maskells.com](mailto:lettings@maskells.com)

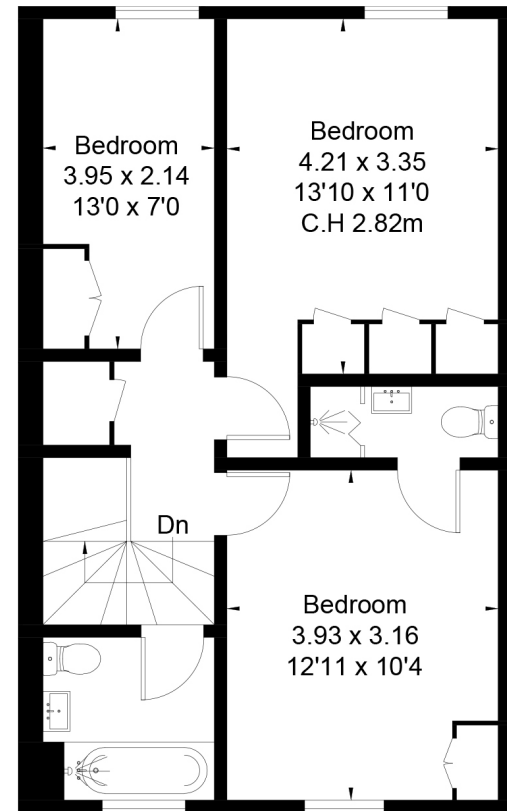
[maskells.com](http://maskells.com)



Ground Floor



First Floor



Second Floor

