



Sager House,  
Seymour Street W1H

A charming 1st-floor flat nestled on Seymour Street, within the Portman Village. Offering a generous layout spanning 1,014 square feet, this delightful property comprises two bedrooms, two bathrooms and a large reception / dining room.



### Accommodation and Amenities

- 2 DOUBLE BEDROOMS
- 2 ENSUITE BATHROOMS
- LARGE RECEPTION ROOM
- FIRST FLOOR
- LIFT
- PORTER

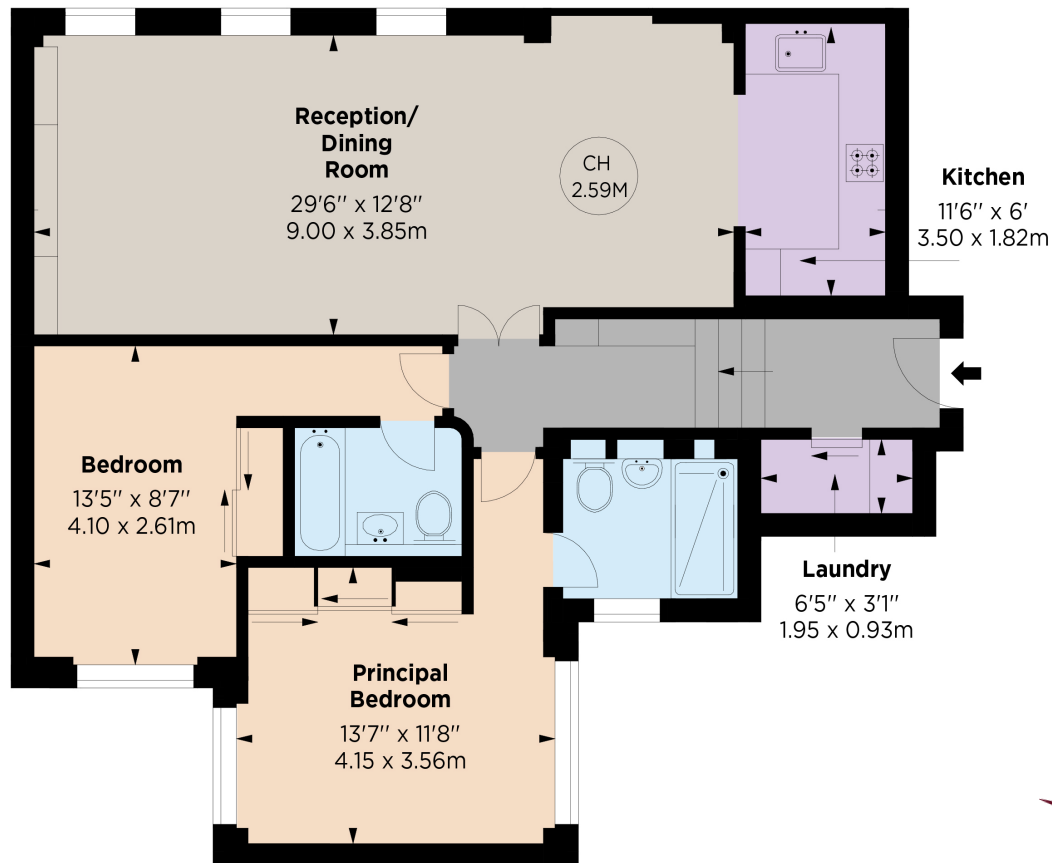


Sager House is a portered Georgian Style Mansion House found on Seymour Street just minutes from Marble Arch Station (Central Line) and Hyde Park, along with all of the local high-end restaurants and schools that the local area provides.



## APPROXIMATE FLOOR AREA

94.2 sq m / 1,014 sq ft



First Floor



## TERMS

**Asking Price** £1,550,000

**Tenure** Leasehold 89 years remaining

**Service Charge** £5,586.12 per annum

**Ground Rent** £200 Per annum

**EPC** C

**Council Tax Band** H

**Local Authority** Westminster City Council

*Let's talk Mortgages*

Maskells has partnered with Private Finance, an independent mortgage broker, directly authorised with specialist knowledge and whole of market access.

**CLICK HERE**

[Privatefinance@maskells.com](mailto:Privatefinance@maskells.com)

Your home may be repossessed if you do not keep up repayments on your mortgage



@maskellsea

# Maskells

Marylebone and West End, London

Tel: 0207 590 1300

[sales@maskells.com](mailto:sales@maskells.com)

[lettings@maskells.com](mailto:lettings@maskells.com)

[maskells.com](http://maskells.com)