



Wynnstay Gardens
Kensington W8

Maskells

A stunning and well-presented family apartment located on the lower ground floor of this ever-popular mansion block in the heart of Kensington.



Accommodation and Amenities

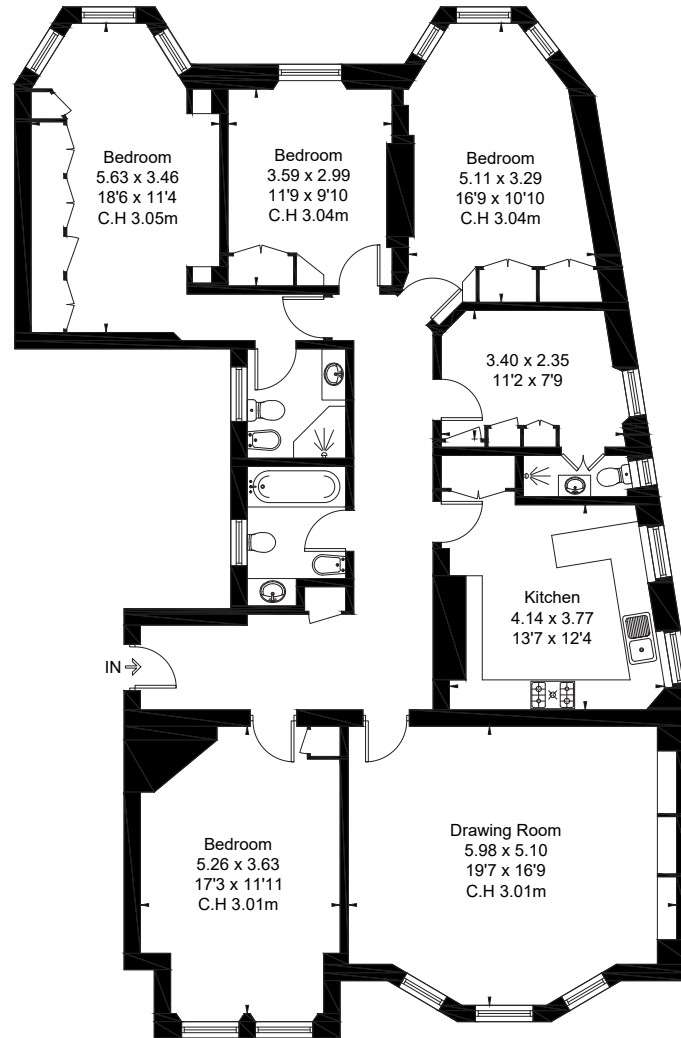
- 4/5 BEDROOMS
- POPULAR MANSION BLOCK
- HIGH CEILINGS THROUGHOUT
- EXCELLENT LOCAL SCHOOL NEARBY



The apartment benefits from a large drawing room with a separate eat-in kitchen, four good sized bedrooms, a study and private parking. Wynnstay Gardens was built in 1885 and is one of the most exclusive Victorian mansion buildings in Kensington with a helpful team of porters.

Wynnstay Gardens is located just to the south of Kensington High Street and therefore benefits from the shopping and transport facilities of the area. Holland Park and Kensington Gardens are nearby.





APPROXIMATE FLOOR AREA

153.6 sq m / 1,653 sq ft



Lower Ground Floor

TERMS

Asking Price £1,900,000

Tenure Leasehold with a Share of Freehold

Service Charge £10,000 Per Annum

Ground Rent Peppercorn

EPC D

Local Authority The Royal Borough of Kensington and Chelsea

Council Tax Band G

Let's talk Mortgages

Maskells has partnered with Private Finance, an independent mortgage broker, directly authorised with specialist knowledge and whole of market access.

CLICK HERE

privatefinance@maskells.com

Your home may be repossessed if you do not keep up repayments on your mortgage



@maskellsea

Maskells

105 Kensington Church Street,
London W8 7LN
Tel: 0207 581 2216
sales@maskells.com
lettings@maskells.com

maskells.com

