



ONSLOW GARDENS, SOUTH KENSINGTON SW7

£1,300 Per Week (£5,633.33 PCM)

FEATURES

- Two bedroom apartment
- Beautifully furnished
- Roof terrace
- Second floor with lift
- Open plan kitchen/reception room

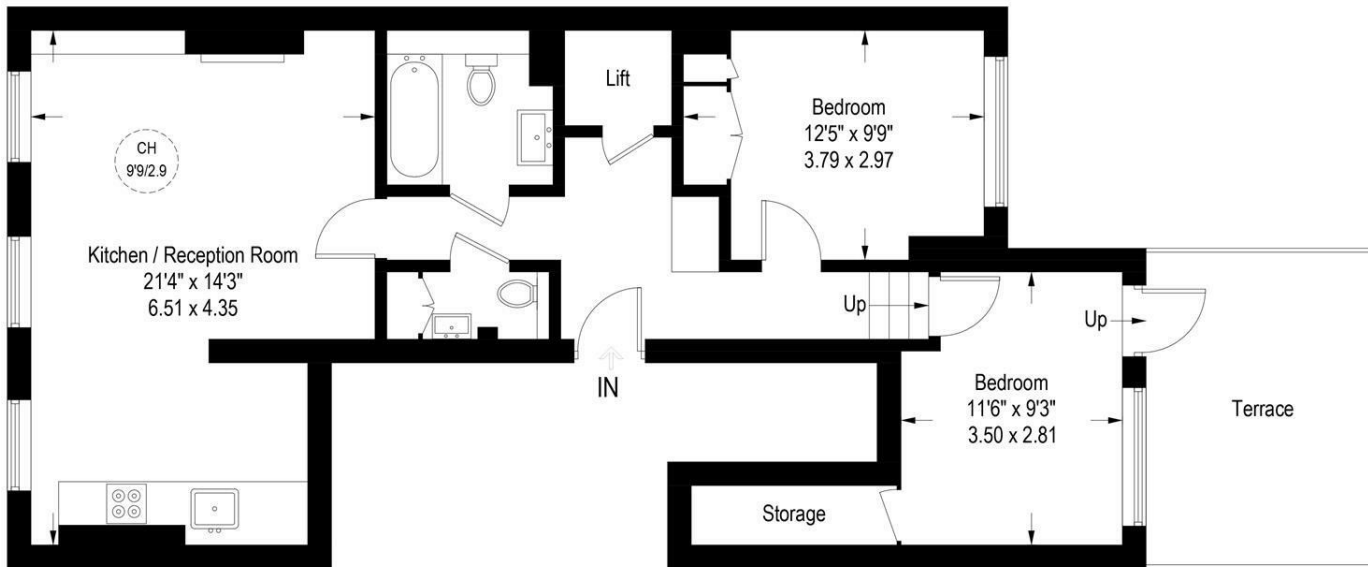


Maskells

| Energy Efficiency Rating | | Current | Potential |
|---|-------------------------|---------|-----------|
| Very energy efficient - lower running costs | | | |
| (92 plus) A | | | |
| (81-91) B | | | |
| (69-80) C | | 73 | 83 |
| (55-68) D | | | |
| (39-54) E | | | |
| (21-38) F | | | |
| (1-20) G | | | |
| Not energy efficient - higher running costs | | | |
| England & Wales | EU Directive 2002/91/EC | | |

Onslow Gardens, SW7

Approximate Gross Internal Area = 722 sq ft / 67.1 sq m



Second Floor

Illustration for identification purposes only, measurements are approximate, not to scale. (ID997089)

Call us on

0207 581 2216

lettings@maskells.com

www.maskells.com

Council Tax Band C

This charming two bedroom apartment on Onslow Gardens has fantastic views over the communal garden square and an abundance of light throughout the property. There is an open plan, modern, intergrated kitchen/reception room with high ceilings and three large sash windows and a lovely fireplace. The master bedroom has wonderful in built storage and a king size bed. The second bedroom to the rear of the property has a double bed and ample storage with a walk in storage cupboard. There is a terrace large enough to entertain on with pretty views over the local church and mews. The apartment has a good size family bathroom with rainforest shower and an additional WC for guests. The property has been decorated in soft tones making the feel of this property very tranquil. There is parquet flooring throughout the apartment and it has the added benefit of direct lift access.

Agents Note: Whilst every care has been taken to prepare these particulars, they are for guidance purposes only. All measurements are approximate and are for general guidance purposes only and whilst every care has been taken to ensure their accuracy, they should not be relied upon and potential buyers are advised to recheck the measurements.

Maskells