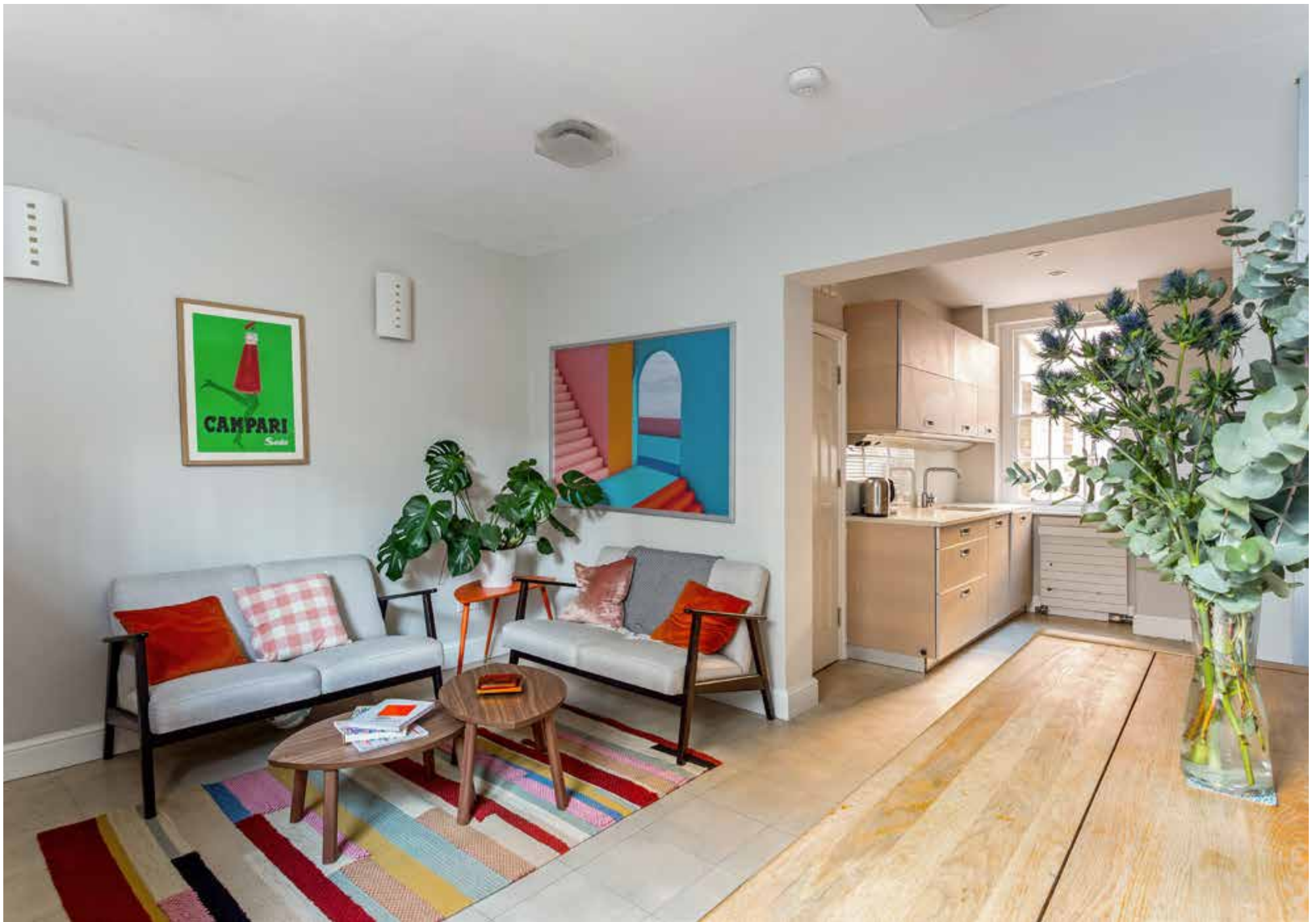




Ponsonby Place  
Westminster SW1







A handsome 5 bedroom period house, of Victorian architecture, situated on a quiet residential street in Westminster.



### Accommodation and Amenities

- FREEHOLD HOUSE
- 5 BEDROOMS
- EXCELLENT LOCATION
- GOOD RECEPTION SPACE

Laid out over 4 floors, there is an excellent balance of open plan reception space and bedroom accommodation. On the ground floor, there is a double reception room with a fireplace forming the focal point to the room, making it an excellent space in which to relax or entertain. On rear extension, there is a single bedroom which could also be used as a home office. On the lower ground floor, there is a fully fitted kitchen which opens out into an excellent dining room. Towards the rear is a most practical utility room and guest cloakroom. A rear door leads out onto a private patio garden – perfect for dining al-fresco in summer months.

On the first floor there is a good principal bedroom with excellent built-in storage and an ensuite shower room. There is also a separate family bathroom which services 3 further bedrooms. Of note is the fact that the house also offers generous loft storage.

Ponsonby Place is a short walk from the “Moreton Triangle” which offers artisan eateries and coffee shops. Pimlico underground station is 0.2 miles away and Vauxhall Station, providing overground services to Central London as well as underground access, is 0.5 miles away.









## APPROXIMATE FLOOR AREA

148.3 sq m / 1,596 sq ft

## TERMS

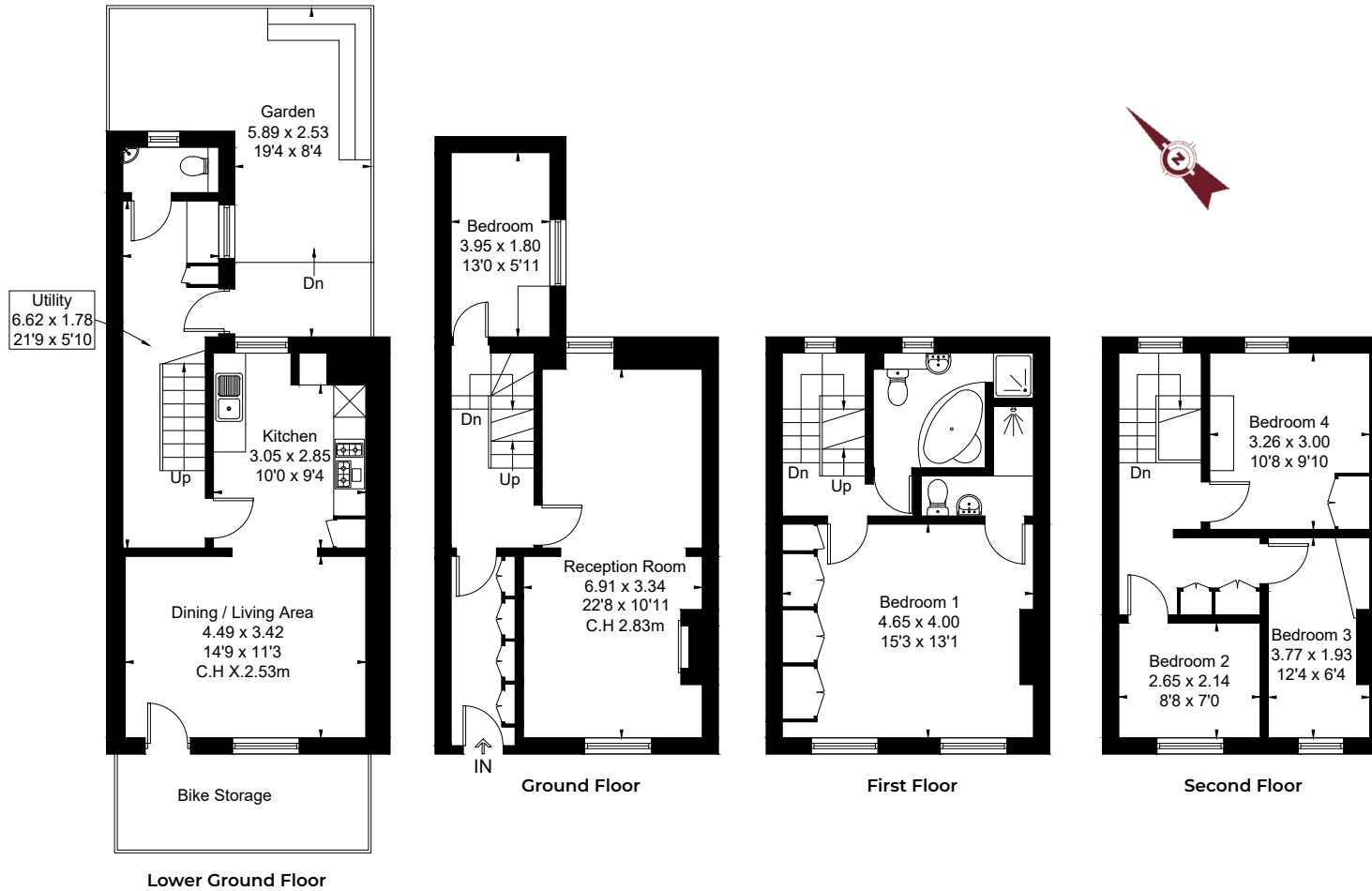
Asking Price £1,795,000

Tenure Freehold

EPC D

Council Tax Band G

Local Authority City of Westminster



*Let's talk Mortgages*

Maskells has partnered with Private Finance, an independent mortgage broker, directly authorised with specialist knowledge and whole of market access.

**CLICK HERE**

[Privatefinance@maskells.com](mailto:Privatefinance@maskells.com)

Your home may be repossessed if you do not keep up repayments on your mortgage



@maskellsea

# Maskells

71 Walton Street, London SW3 2HT

Tel: 0207 581 2216

[sales@maskells.com](mailto:sales@maskells.com)

[lettings@maskells.com](mailto:lettings@maskells.com)

[maskells.com](http://maskells.com)