



Lancaster Road
London W11

Maskells

A beautifully designed and well-proportioned one bedroom apartment spanning the first floor of this Notting Hill town house.



Accommodation and Amenities

- HIGH CEILINGS
- INTERIOR DESIGNED
- CLOSE TO PORTOBELLO ROAD
- 0.3 MILES TO LADBROKE GROVE UNDERGROUND STATION
- 0.8 MILES TO NOTTING HILL GATE STATION

The flat has been thoroughly refurbished and is presented with a stylish elegance.

The high-ceilinged reception has large west facing sash windows which flood the room with light and the room has pleasant views overlooking a large tree, so enjoying leafy privacy in the summer months.

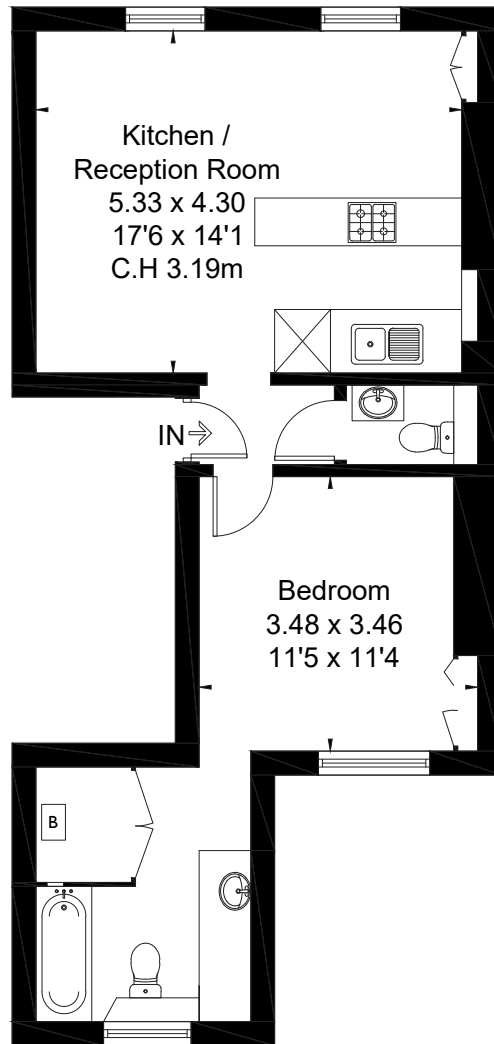
A large master bedroom with en-suite bathroom completes the accommodation along with a guest cloakroom.

Lancaster Road is a popular location in the heart of Notting Hill which runs east off Ladbrooke Grove and is close to local transport links and underground stations.

The property is conveniently located close to Portobello Road which is renowned for its street market and cafes, boutiques, and excellent restaurants.

Transport links are available from Ladbrooke Grove Underground Station (0.3 miles) for Circle and Hammersmith lines, Notting Hill Gate (0.8 miles) for Central and District lines and Paddington Station (1.6 miles) has fast and direct access to Heathrow Airport.





First Floor

APPROXIMATE FLOOR AREA

49.3 sq m / 531 sq ft



TERMS

Asking Price £725,000

Tenure Share of Freehold

Service Charge £2,200 per annum

Council Tax Band E

EPC C

Local Authority The Royal Borough of Kensington and Chelsea

Let's talk Mortgages

Maskells has partnered with Private Finance, an independent mortgage broker, directly authorised with specialist knowledge and whole of market access.

CLICK HERE

Privatefinance@maskells.com

Your home may be repossessed if you do not keep up repayments on your mortgage



@maskellsea

Maskells

105 Kensington Church Street,
London W8 7LN

Tel: 0207 581 2216

sales@maskells.com

lettings@maskells.com

maskells.com

