



Ennismore Gardens
Knightsbridge SW7

Maskells

An immaculate split-level apartment with a balcony nearby Hyde Park.

This well-appointed and immaculate apartment has been refurbished to a very high standard with plenty of light flowing throughout. Located on the first floor of a classic period building benefitting from access to one of Knightsbridge's finest garden squares. The flat is entered into the impressive reception room, boasting a high ceiling and 3 floor-to-ceiling windows that open out onto the balcony, giving an abundance of natural light and an unhindered view.



Accommodation and Amenities

- NEWLY REFURBISHED
- LEASEHOLD
- LOCATED IN ONE OF KNIGHTSBRIDGE'S FINEST GARDEN SQUARES
- BALCONY



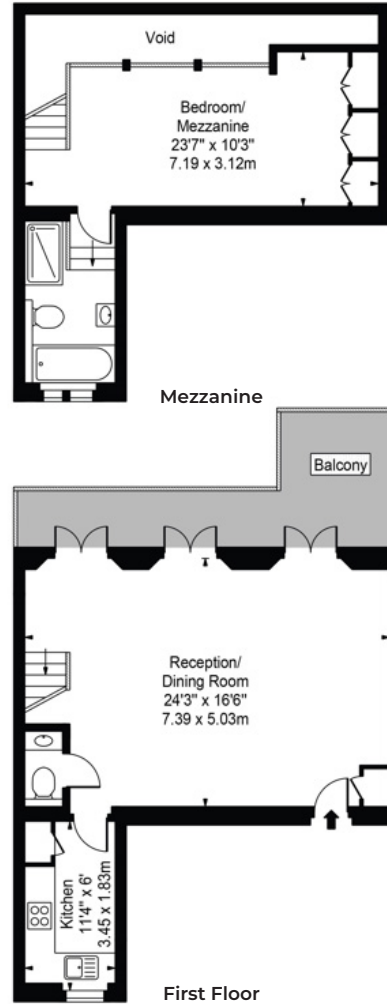
The open plan kitchen is fully equipped with integrated appliances. There is a guest cloakroom. The mezzanine level bedroom benefits from an en-suite bathroom, built in storage and a wonderful view from the floor-to-ceiling windows.

Ennismore Gardens is a highly desirable address located in the heart of Knightsbridge with Hyde Park being only a few minutes away. The area is renowned for its proximity to world-class shopping destinations like Harrods and Sloane Street, as well as London's most famous museums and the Royal Albert Hall.



APPROXIMATE FLOOR AREA

70.05 sq m / 754 sq ft



TERMS

Asking Price £1,150,000

Tenure Leasehold, expires 20/12/2116

Service Charge £4,094 Per Annum

Ground Rent Peppercorn

EPC C

Council Tax Band G

Local Authority City of Westminster

Let's talk Mortgages

Maskells has partnered with Private Finance, an independent mortgage broker, directly authorised with specialist knowledge and whole of market access.

CLICK HERE

Privatefinance@maskells.com

Your home may be repossessed if you do not keep up repayments on your mortgage



@maskellsea

Maskells

71 Walton Street, London SW3 2HT

Tel: 0207 581 2216

sales@maskells.com

lettings@maskells.com

maskells.com